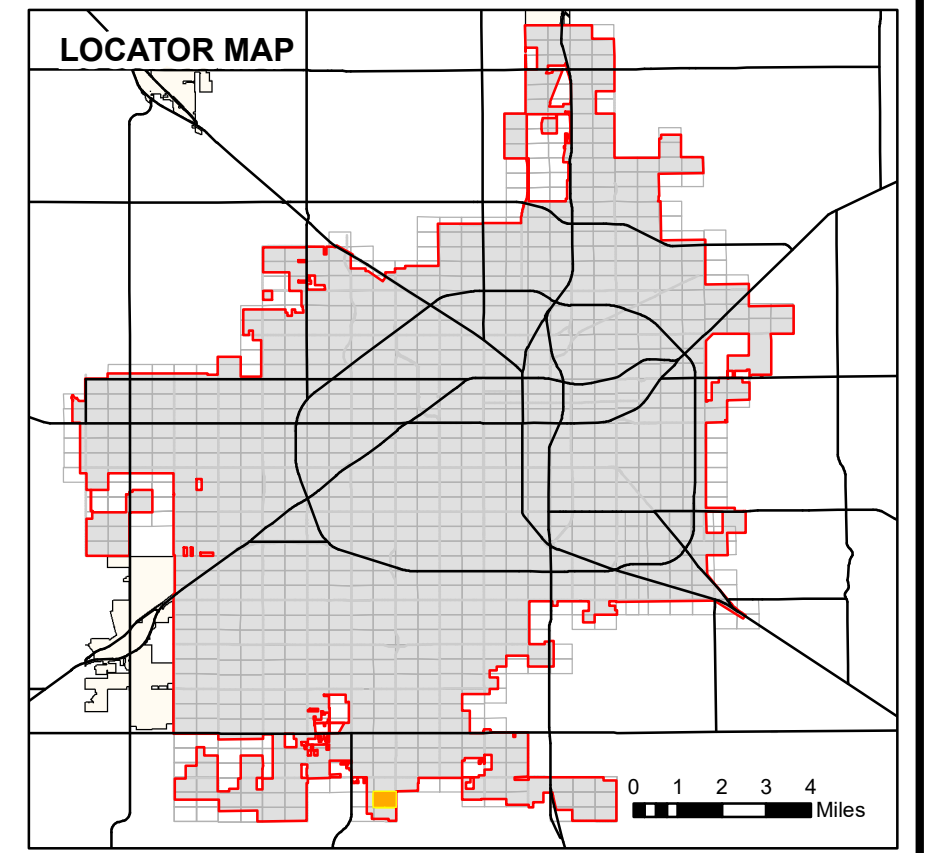


1779

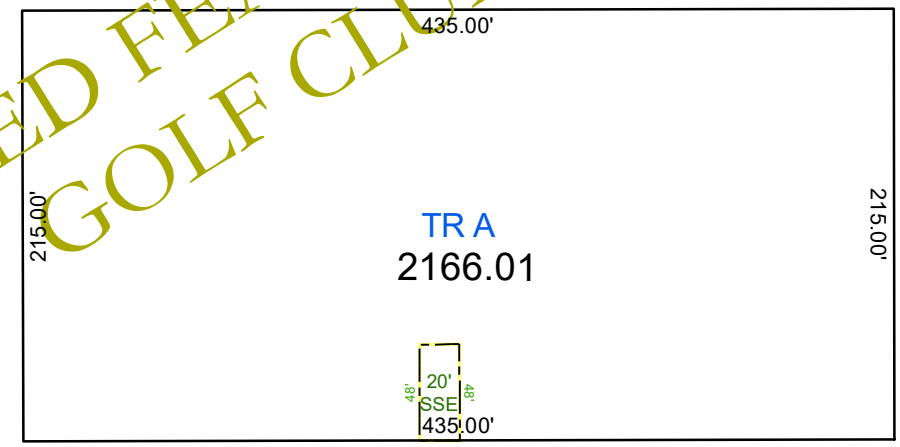
1956



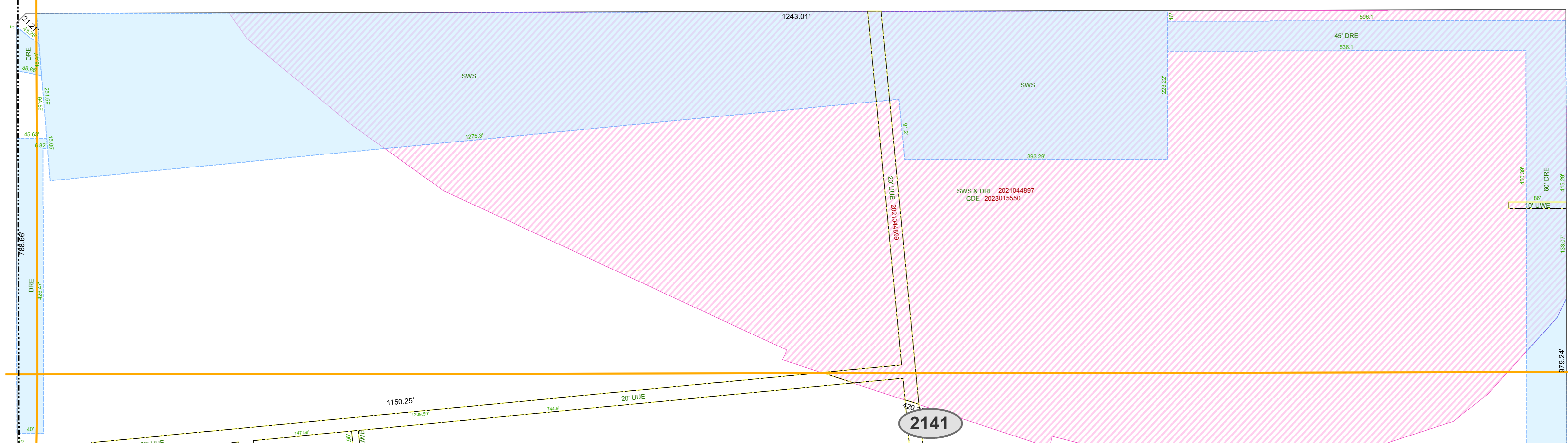
QUAKER AVE

ROW V0278 P01

RED FEATHER GOLF CLUB



1955



- Lot Lines
- Block Lines
- Railroad Track
- ROW Subsections
- City Limits
- Use License
- Utility, Access, or Garbage Service Easement
- Utility Equipment Easement
- Stormwater Line Easement
- Drainage Easement
- Street Dedication Deed
- Alley Dedication Deed
- Park Dedication Deed
- Property Acquisition Deed
- Property Divestiture Deed
- Right-of-Way Easement
- Plat Dedicated Right-of-Way
- Railroad Deed or Spur Easement
- State Deed or Right-of-Way Easement
- Closed/Abandoned by Ordinance
- Neighboring Map Number

- NOTES:
- All radii are 15' unless otherwise noted.
  - See plat files for curve data and misc. dimensions not shown for clarity.
  - Abbreviations:
- |  |   |
|--|---|
| AC - Closed Alley                                  | OPE - Overhead Power Line Easement                    |
| ACE - Access/Public Access Easement                | OPESP - Open Space Easement                           |
| ADD - Alley Dedication Deed                        | ORD - Ordinance                                       |
| AUL - Alley Use License                            | PAE - Pedestrian Access Easement                      |
| BSE - Bus Shelter Easement                         | PDD - Park Dedication Deed                            |
| CAE - Closed Access Easement                       | PEE - Pedestal Easement                               |
| CDE - Closed Drainage Easement                     | PELE - Petroleum/Oil Line Easement                    |
| CCE - Communications Equipment Easement            | PPP - Primary Flexibility Point Easement              |
| CCE - Closed Garbage Service Easement              | PUPD - Public Use Dedication Easement                 |
| CRAE - Cross Access Easement                       | QCD - Quit Claim Deed                                 |
| CUE - Closed Utility Easement                      | REL - Release   |
| DD - Dedication Deed                               | RES - Resolution                                      |
| DPE - Dumpster Pad Easement                        | ROE - Release of Easement                             |
| DRD - Drainage Ditch Easement                      | ROW - Right of Way Easement                           |
| DRE - Drainage Easement                            | RPZ - Runway Protection Zone Easement                 |
| DUE - Drainage & Underground Utility Easement      | RSD - Railroad Deed                                   |
| DWOW - Deed Without Warranty                       | RSE - Railroad Spur Easement                          |
| EDE - Emission Disposal Building                   | RSV - Railroad Spur Easement                          |
| ESMT - Easement (Unspecified)                      | SAI - Service Area Interface Easement                 |
| EUL - Easement Use License                         | SBE - Substitution Easement                           |
| EVAE - Emergency Vehicle Access Easement           | SC - Closed Street                                    |
| EXCH - Exchange Deed                               | SDS - Street Dedication Deed                          |
| FE - Fence Easement                                | SEE - Sealing Enclosure Easement                      |
| FHE - Fire Hydrant Easement                        | SEK - Sidewalk Easement                               |
| FPE - Fire Line/Protection Easement                | SLP - Skips Easement                                  |
| FSUWE - Fence Setback and Utility Working Easement | SLS - Salt Water Line Easement                        |
| GD - Gar (Deed)                                    | SSE - Sanitary Sewer Easement                         |
| GFE - Gas Facilities Easement                      | SUL - Street Line License                             |
| GSE - Garbage Service/Collection Easement          | SWE - Underground Stormwater Line Easement            |
| GTE - Gas Meter and Telephone Pedestal Easement    | SWS - Stormwater Storage Easement                     |
| GWE - Guy Wire Easement                            | TAC - Telephone Apparatus Cabinet Easement            |
| IEE - Egress Easement                              | TPE - Transformer Pad Easement                        |
| JBE - Junction Box Easement                        | UCE - Underground Communications Line Easement        |
| JUD - Judgment/Agreed Judgment                     | UEE - Underground Electric Line Easement              |
| LNDE - Landscape Easement                          | UGE - Underground Gas Line Easement                   |
| LSE - Lift Station Easement                        | UUE - Underground Street Light Cable Easement         |
| LLL - Land Use License                             | UUE - Underground Utility, Pedestal, & Meter Easement |
| MAE - Maintenance Access Easement                  | UWE - Underground Vault Easement                      |
| MHE - Manhole Easement                             | UWE - Underground Water Line Easement                 |
| MWP - Monitor Well Permit                          | UWSE - Underground Water & Sewer Line Easement        |
| NAME - Street Name Change                          | VAC - Vacated Plat                                    |
| OCE - Overhead Communications Line Easement        | WD - Warranty Deed                                    |
| OHE - Overhang Easement                            | WELL - Well Easement                                  |
|  | WWE - Underground Waste Water Line Easement           |

PLEASE VERIFY ALL DIMENSIONS AND RIGHT OF WAY INFORMATION WITH OFFICIAL PLATS AND SEPARATE INSTRUMENT DOCUMENTS.

As required by SECTION 1, CHAPTER 2051, SUBCHAPTER D, GEOSPATIAL DATA PRODUCTS of the Government Code, the City of Lubbock hereby provides notice that the data on this map was created by the City of Lubbock. Any data that appears to represent property boundaries is for informational purposes and may not have been prepared or be suitable for legal, engineering, or surveying purposes. It does not represent an on-the-ground survey and represents only the approximate relative location of property boundaries.

Public Works Engineering  
 P O Box 2000  
 1625 13th Street  
 Lubbock, TX 79457

Reference Scale: 1:1,200  
 Date: 4/4/2024

Base Map 318  
 Block-Section AK-6

**ROW**  
SECTIONAL MAP

**1956**