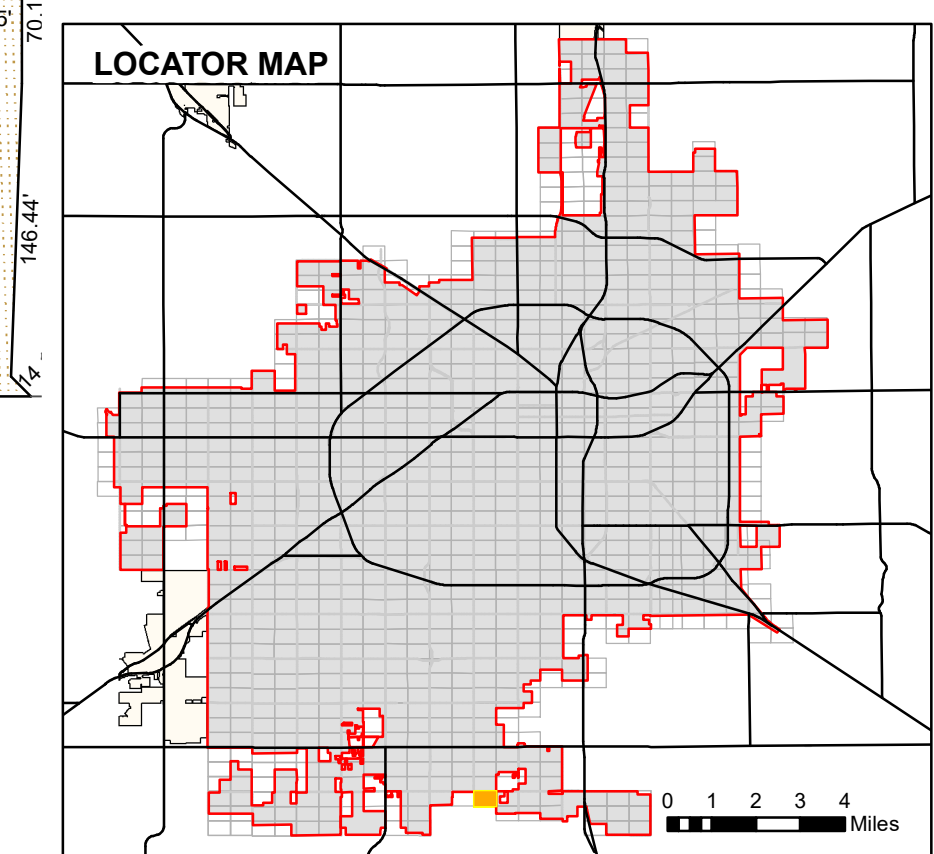
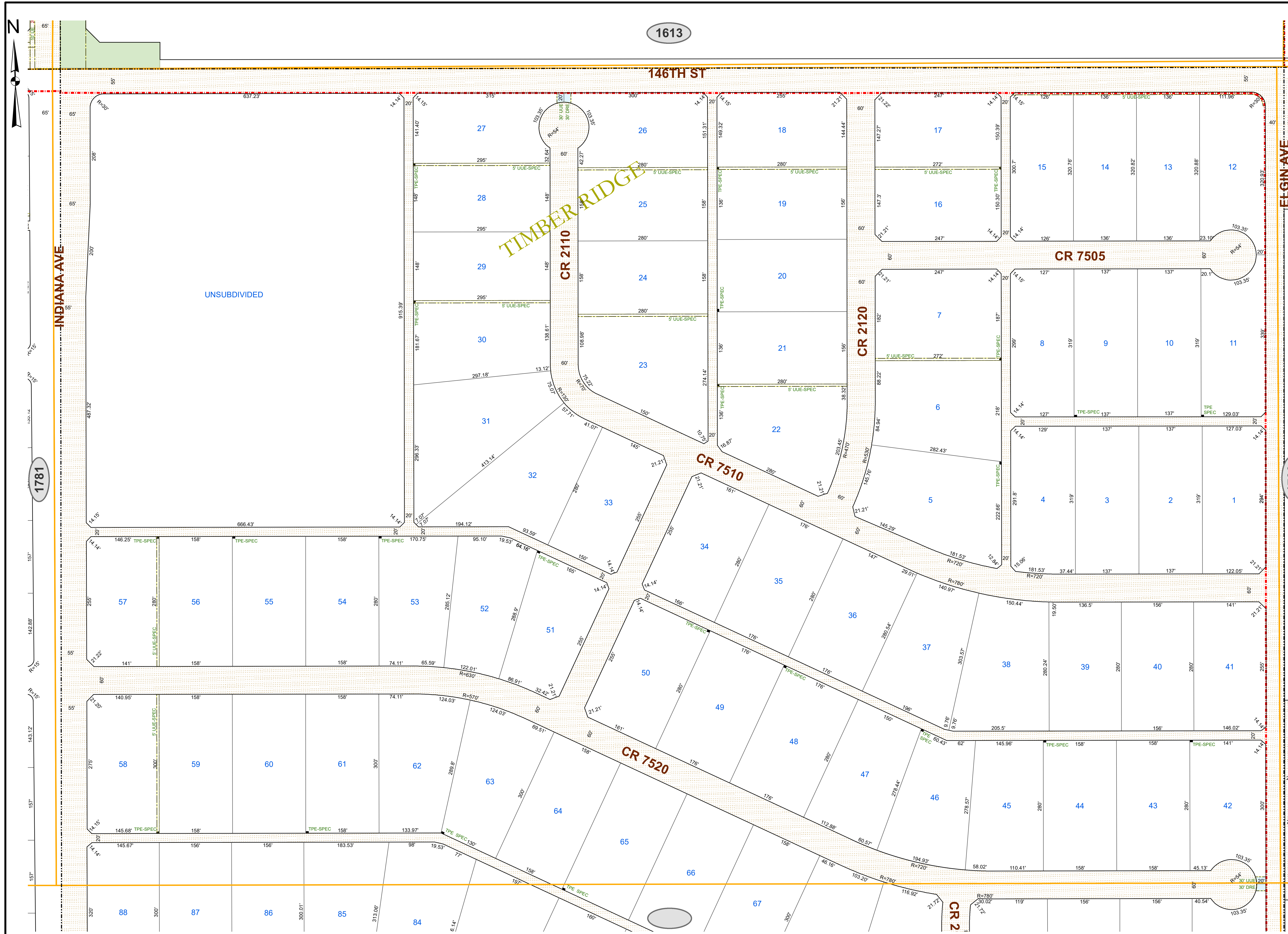


1613

1782



- Lot Lines
- Block Lines
- Railroad Track
- ROW Subsections
- City Limits
- Use License
- Utility, Access, or Garbage Service Easement
- Utility Equipment Easement
- Stormwater Line Easement
- Drainage Easement
- Street Dedication Deed
- Alley Dedication Deed
- Park Dedication Deed
- Property Acquisition Deed
- Property Divestiture Deed
- Right-of-Way Easement
- Plat Dedicated Right-of-Way
- Railroad Deed or Spur Easement
- State Deed or Right-of-Way Easement
- Closed/Abandoned by Ordinance
- Neighboring Map Number

- NOTES:**
- All radii are 15' unless otherwise noted.
 - See plat files for curve data and misc. dimensions not shown for clarity.
 - Abbreviations:
- | | |
|------------------------------------------------------|-------------------------------------------------------|
| AC - Closed Alley | OPE - Overhead Power Line Easement |
| ACE - Access/Public Access Easement | OPSP - Open Space Easement |
| ADD - Alley Dedication Deed | ORD - Ordinance |
| AUL - Alley Use License | PAC - Pedestrian Access Easement |
| BSE - Bus Shelter Easement | PDD - Park Dedication Deed |
| CAE - Closed Access Easement | PEL - Pedestal Easement |
| CDE - Closed Drainage Easement | PETL - Petroleum/Oil Line Easement |
| CCE - Communications Equipment Easement | PPP - Primary Flexibility Point Easement |
| CGE - Closed Garbage Service Easement | PUED - Public Use Dedication Easement |
| CRAE - Cross Access Easement | QCD - Quit Claim Deed |
| CUE - Closed Utility Easement | REL - Release |
| DD - Dedication Deed | RES - Resolution |
| DPE - Dumpster Pad Easement | ROE - Release of Easement |
| DRD - Drainage Ditch Easement | ROW - Right of Way Easement |
| DRE - Drainage Easement | RPP - Runway Protection Zone Easement |
| DUE - Drainage & Underground Utility Easement | RSD - Railroad Deed |
| DWOW - Deed Without Warranty | RSE - Railroad Spur Easement |
| EDE - Emission Disposal Building Easement | RSV - Service Area Interface Easement |
| ESMT - Easement (Unspecified) | SBI - Subsurface Burial Interface Easement |
| EUL - Easement Use License | SC - Closed Street |
| EVAE - Emergency Vehicle Access Easement | SDD - Street Dedication Deed |
| EXCH - Exchange Deed | SEE - Switching Enclosure Easement |
| FE - Fence Easement | SGN - Sign Easement |
| FHE - Fire Hydrant Easement | SLP - Slope Easement |
| FPE - Fire Line/Protection Easement | SLS - Salt Water Line Easement |
| FSUVE - Fence, Sidewalk and Utility Working Easement | SSE - Sanitary Sewer Easement |
| GD - GR Deed | SUL - Street Line License |
| GFE - Gas Facilities Easement | SWE - Underground Stormwater Line Easement |
| GSE - Garbage Service/Collection Easement | SWSE - Stormwater Storage Easement |
| GTE - Gas Meter and Telephone Pedestal Easement | TAC - Telephone Apparatus Cabinet Easement |
| GWE - Guy Wire Easement | TPE - Transformer Pad Easement |
| HEE - High-Rise Egress Easement | UE - Utility Easement |
| JBE - Junction Box Easement | UEE - Underground Electric Line Easement |
| JUD - Judgment/Agreed Judgment Easement | UGE - Underground Gas Line Easement |
| LANDSE - Landscape Easement | UGSE - Underground Street Light Cable Easement |
| LSE - Lift Station Easement | UUE - Underground Utility, Pedestal, & Meter Easement |
| LLL - Land Use License | UVE - Underground Vault Easement |
| MAE - Maintenance Access Easement | UWE - Underground Water Line Easement |
| MHE - Manhole Easement | UWSE - Underground Water & Sewer Line Easement |
| MWP - Monitor Well Permit | VAC - Vacated Plat |
| NAME - Street Name Change | WD - Warranty Deed |
| OCE - Overhead Communications Line Easement | WELL - Well Easement |
| OHE - Overhang Easement | WWE - Underground Waste Water Line Easement |

0 50 100 200 300 400 500 Feet

PLEASE VERIFY ALL DIMENSIONS AND RIGHT OF WAY INFORMATION WITH OFFICIAL PLATS AND SEPARATE INSTRUMENT DOCUMENTS.

As required by SECTION 1, CHAPTER 2051, SUBCHAPTER D, GEOSPATIAL DATA PRODUCTS of the Government Code, the City of Lubbock hereby provides notice that the data on this map was created by the City of Lubbock. Any data that appears to represent property boundaries is for informational purposes and may not have been prepared or be suitable for legal, engineering, or surveying purposes. It does not represent an on-the-ground survey and represents only the approximate relative location of property boundaries.

Public Works Engineering
 P O Box 2000
 1625 13th Street
 Lubbock, TX 79457

Reference Scale: 1:1,200
 Date: 4/14/2025

Base Map 316
Block-Section AK-2

ROW SECTIONAL MAP
1782