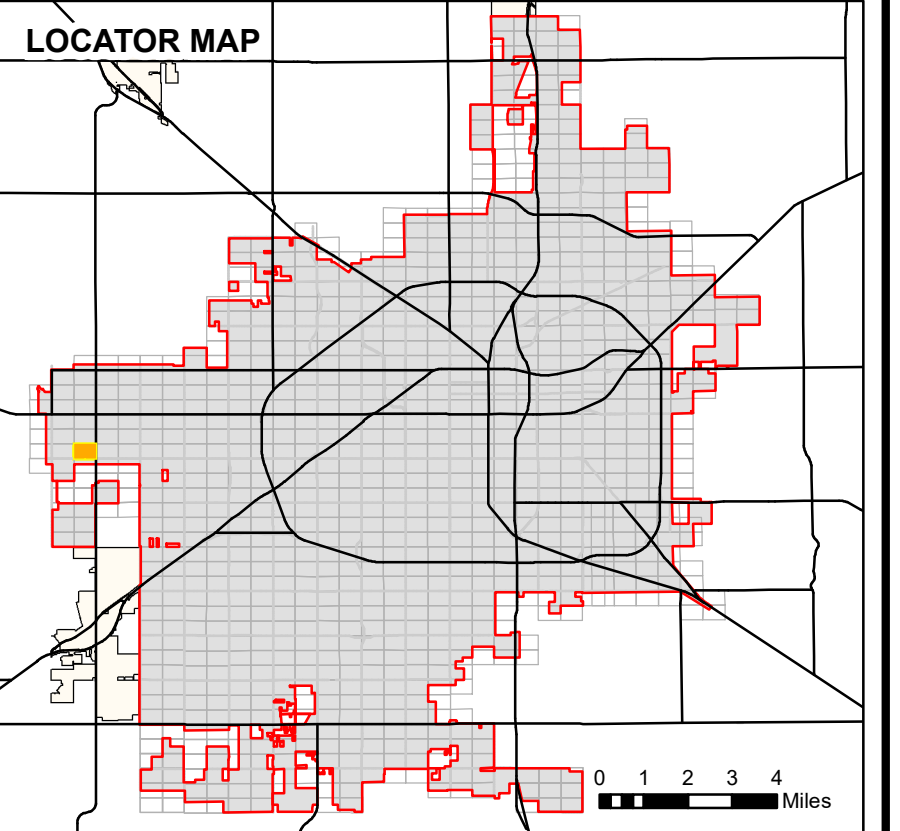
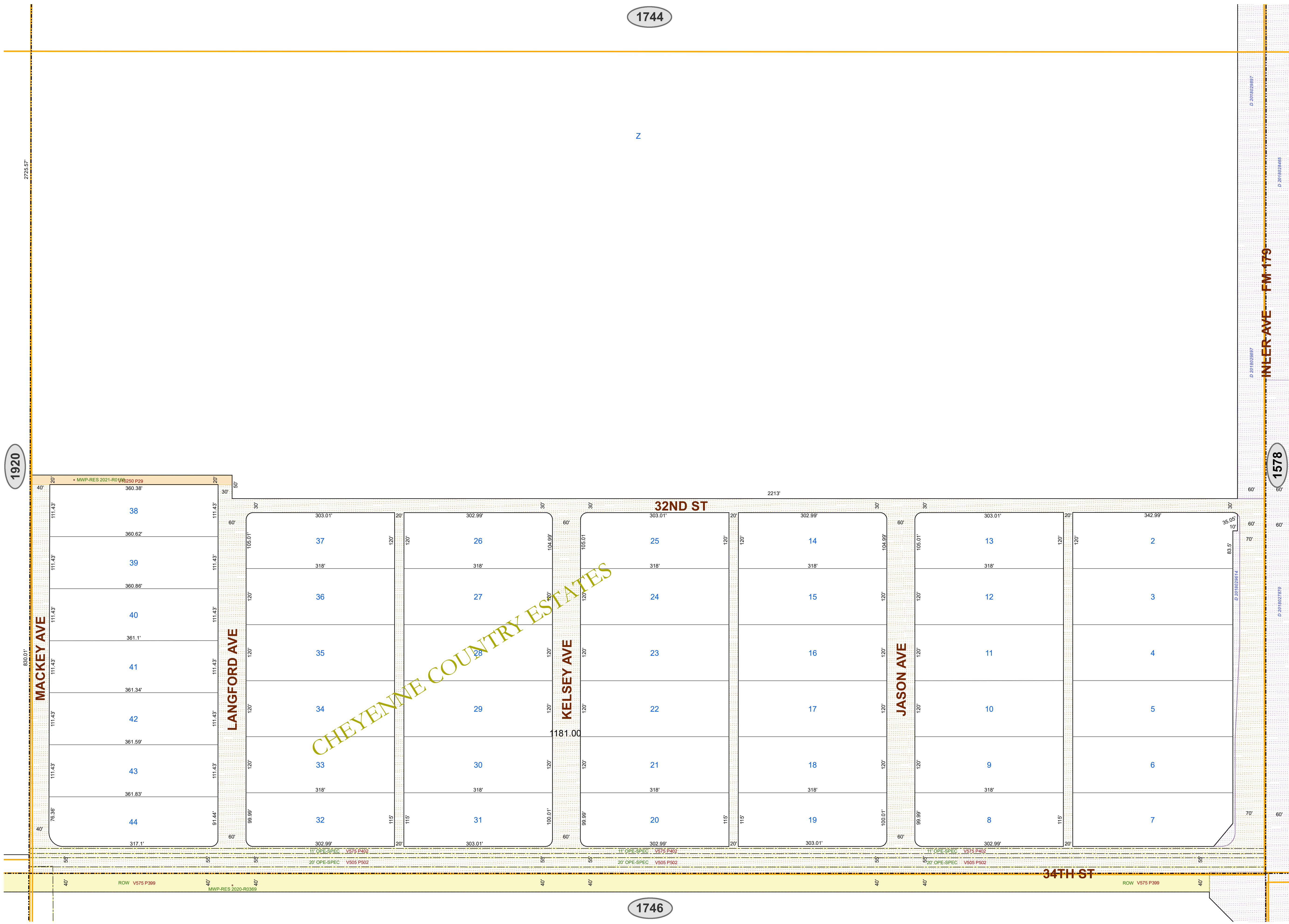




1744

1745



- Lot Lines
- Block Lines
- Railroad Track
- ROW Subsections
- City Limits
- Use License
- Utility, Access, or Garbage Service Easement
- Utility Equipment Easement
- Stormwater Line Easement
- Drainage Easement
- Street Dedication Deed
- Alley Dedication Deed
- Park Dedication Deed
- Property Acquisition Deed
- Property Divestiture Deed
- Right-of-Way Easement
- Plat Dedicated Right-of-Way
- Railroad Deed or Spur Easement
- State Deed or Right-of-Way Easement
- Closed/Abandoned by Ordinance
- Neighboring Map Number

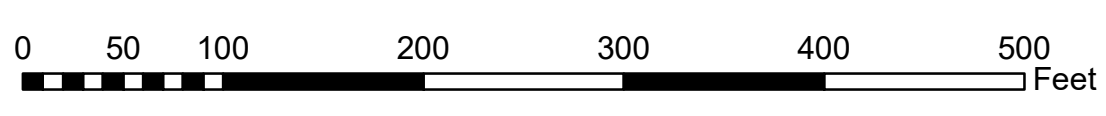
NOTES:  
 1. All radii are 15' unless otherwise noted.  
 2. See plat files for curve data and misc. dimensions not shown for clarity.  
 3. Abbreviations:

AC - Closed Alley	OPE - Overhead Power Line Easement
ACE - Access/Public Access Easement	OSP - Open Space Easement
ADD - Alley Dedication Deed	ORD - Ordinance
AUL - Alley Use License	PAE - Pedestrian Access Easement
BSE - Bus Shelter Easement	PDD - Park Dedication Deed
CAE - Closed Access Easement	PEE - Pedestal Easement
CDE - Closed Drainage Easement	PELE - Petroleum/Oil Line Easement
CEE - Communications Equipment Easement	PPP - Primary Flexibility Point Easement
CGE - Closed Garbage Service Easement	PUD - Public Use Dedication Easement
CRAE - Cross Access Easement	QCD - Quit Claim Deed
CUE - Closed Utility Easement	REL - Release
DD - Dedication Deed	RES - Resolution
DPE - Dumpster Pad Easement	ROE - Release of Easement
DRD - Drainage Ditch Easement	ROW - Right of Way Easement
DRE - Drainage Easement	RPP - Railroad Spur Easement
DUE - Drainage & Underground Utility Easement	RSE - Railroad Spur Easement
DWOW - Closed Without Warranty	SAI - Service Area Interface Easement
EDE - Emission Disposal Building	SBSI - Substation Easement
ESMT - Easement (Unspecified)	SC - Closed Street
EUL - Easement Use License	SDD - Street Dedication Deed
EVAE - Emergency Vehicle Access Easement	SEE - Switching Enclosure Easement
EXCH - Exchange Deed	SGN - Sign Easement
FE - Fence Easement	SLE - Sidewalk Easement
FHE - Fire Hydrant Easement	SLP - Slope Easement
FPE - Fire Line/Protection Easement	SLS - Salt Water Line Easement
FSUWE - Fence Setback and Utility Working Easement	SSE - Sanitary Sewer Easement
GD - GR Deed	SUL - Street Use License
GFE - Gas Facilities Easement	SWE - Underground Stormwater Line Easement
GSE - Garbage Service/Collection Easement	SWSE - Stormwater Storage Easement
GTE - Gas Meter and Telephone Pedestal Easement	TAC - Telephone Apparatus Cabinet
GWE - Guy Wire Easement	TPE - Transformer Pad Easement
IEE - Ingress-Egress Easement	UE - Utility Easement
JBE - Junction Box Easement	UEE - Underground Electric Line Easement
JUD - Judgment/Agreed Judgment	UGE - Underground Gas Line Easement
LANDSE - Landscape Easement	USE - Underground Street Light Cable Easement
LSE - Lift Station Easement	UUE - Underground Utility Easement
LUL - Land Use License	UUEE - Underground Utility, Pedestal, & Meter Easement
MAE - Maintenance Access Easement	UWSE - Underground Water Line Easement
MHE - Manhole Easement	UWSE - Underground Water & Sewer Line Easement
MWP - Monitor Well Permit	VAC - Vacated Plat
NAME - Street Name Change	WD - Warranty Deed
OCCE - Overhead Communications Line Easement	WEL - Well Easement
OHE - Overhang Easement	WWL - Underground Waste Water Line Easement

1920

1578

1746



PLEASE VERIFY ALL DIMENSIONS AND RIGHT OF WAY INFORMATION WITH OFFICIAL PLATS AND SEPARATE INSTRUMENT DOCUMENTS.

As required by SECTION 1, CHAPTER 2051, SUBCHAPTER D, GEOSPATIAL DATA PRODUCTS of the Government Code, the City of Lubbock hereby provides notice that the data on this map was created by the City of Lubbock. Any data that appears to represent property boundaries is for informational purposes and may not have been prepared or be suitable for legal, engineering, or surveying purposes. It does not represent an on-the-ground survey and represents only the approximate relative location of property boundaries.

Public Works Engineering  
 P O Box 2000  
 1625 13th Street  
 Lubbock, TX 79457

Reference Scale: 1:1,200  
 Date: 4/14/2025

Base Map 264  
 Block-Section D6-6

**ROW SECTIONAL MAP**

**1745**