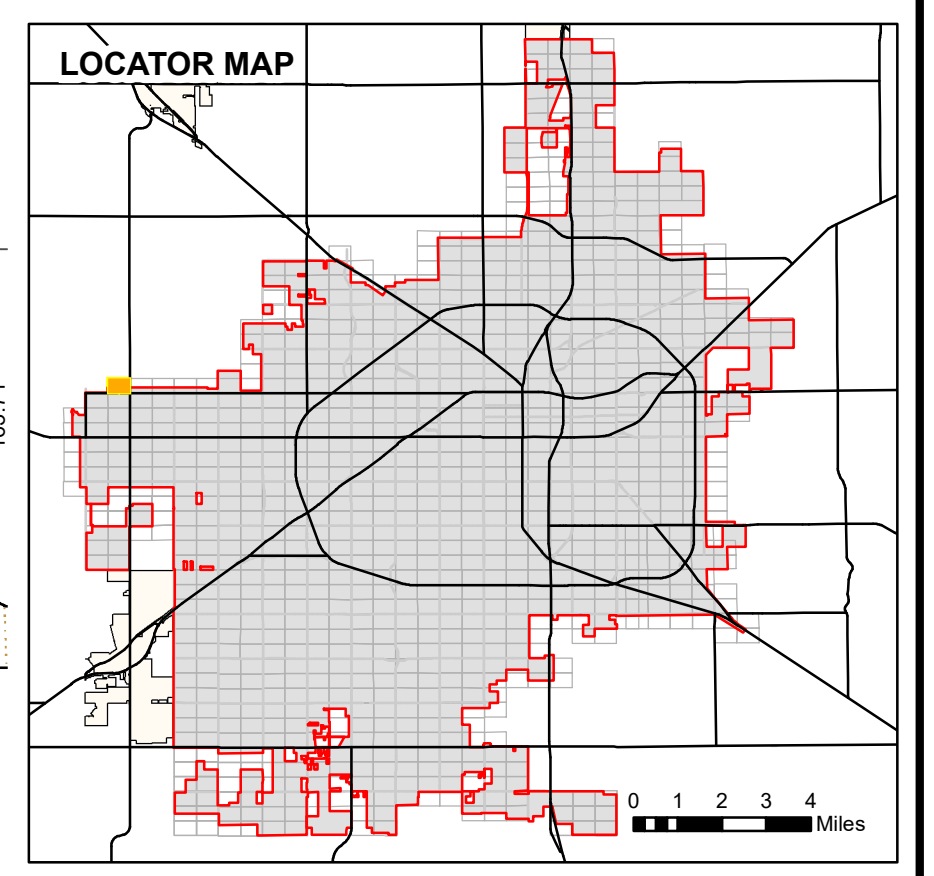


1739

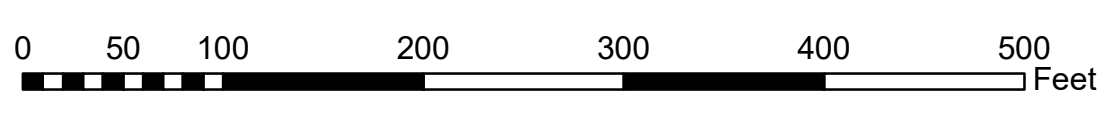
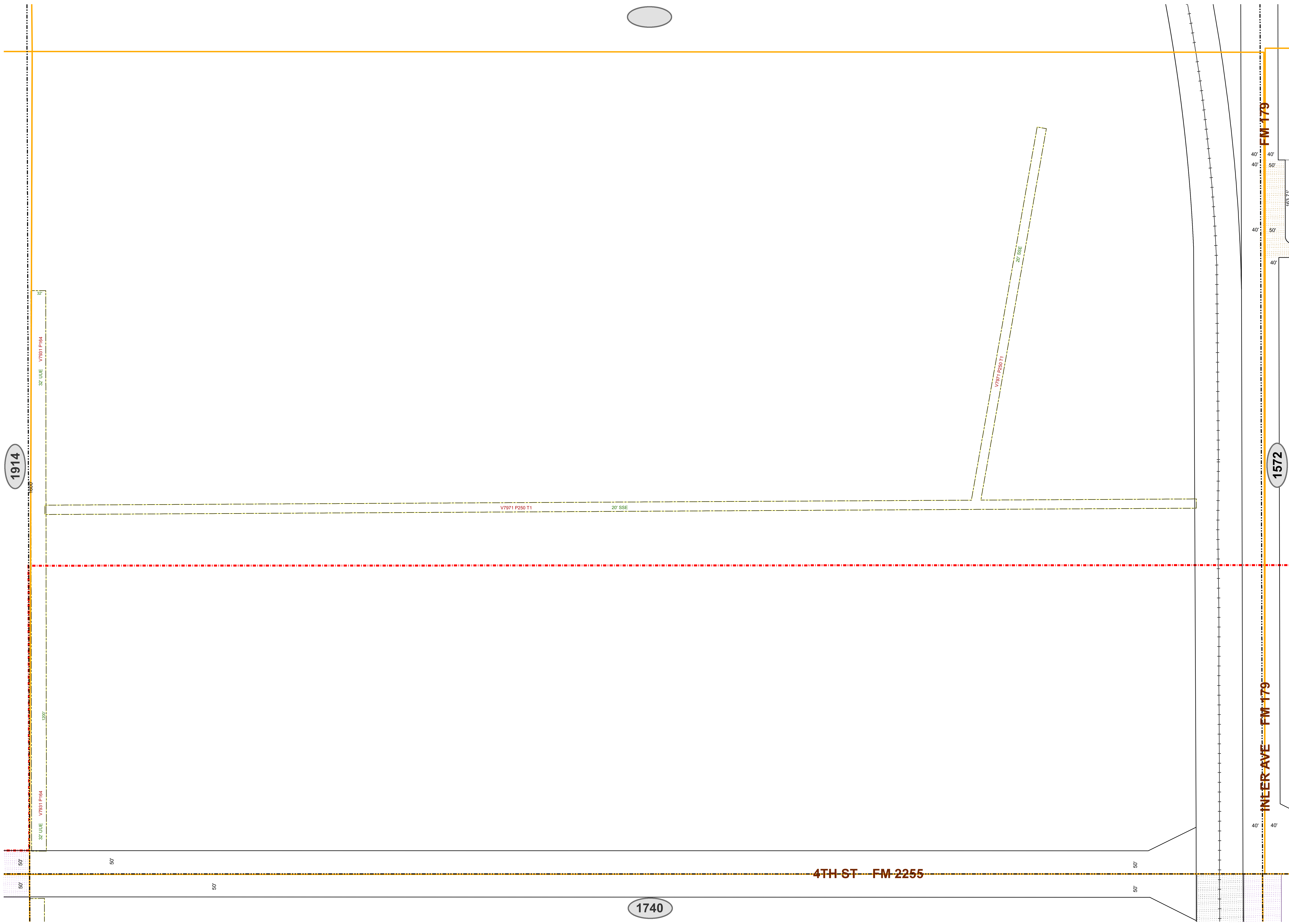


- Lot Lines
- Block Lines
- Railroad Track
- ROW Subsections
- City Limits
- Use License
- Utility, Access, or Garbage Service Easement
- Utility Equipment Easement
- Stormwater Line Easement
- Drainage Easement
- Street Dedication Deed
- Alley Dedication Deed
- Park Dedication Deed
- Property Acquisition Deed
- Property Divestiture Deed
- Right-of-Way Easement
- Plat Dedicated Right-of-Way
- Railroad Deed or Spur Easement
- State Deed or Right-of-Way Easement
- Closed/Abandoned by Ordinance
- Neighboring Map Number

- NOTES:
- All radii are 15' unless otherwise noted.
  - See plat files for curve data and misc. dimensions not shown for clarity.
  - Abbreviations:
- |  |   |
|--|---|
| AC - Closed Alley                                  | OPE - Overhead Power Line Easement                    |
| ACE - Access/Public Access Easement                | OPSP - Open Space Easement                            |
| ADD - Alley Dedication Deed                        | ORD - Ordinance                                       |
| AUL - Alley Use License                            | PAE - Pedestrian Access Easement                      |
| BSE - Bus Shelter Easement                         | PDD - Park Dedication Deed                            |
| CAE - Closed Access Easement                       | PEE - Pedestal Easement                               |
| CDE - Closed Drainage Easement                     | RETE - Petroleum/Oil Line Easement                    |
| CEE - Communications Equipment Easement            | PPF - Primary Flexibility Point Easement              |
| CGE - Closed Garbage Service Easement              | PUD - Public Use Dedication Easement                  |
| CRAE - Cross Access Easement                       | QCD - Quit Claim Deed                                 |
| CUE - Closed Utility Easement                      | RES - Release   |
| DD - Dedication Deed                               | RES - Resolution                                      |
| DPE - Dumpster Pad Easement                        | ROE - Release of Easement                             |
| DRD - Drainage Ditch Easement                      | ROW - Right of Way Easement                           |
| DRE - Drainage Easement                            | RPP - Railroad Spur Easement                          |
| DUE - Drainage & Underground Utility Easement      | RSD - Railroad Deed                                   |
| DWOW - Deed Without Warranty                       | SAI - Service Area Interface Easement                 |
| EDE - Emission Disposal Building                   | SBE - Substation Easement                             |
| ESMT - Easement (Unspecified)                      | SC - Closed Street                                    |
| EUL - Easement Use License                         | SD - Street Dedication Deed                           |
| EVAE - Emergency Vehicle Access Easement           | SEE - Sealing Enclosure Easement                      |
| EXCH - Exchange Deed                               | SE - Sealing Enclosure Easement                       |
| FE - Fence Easement                                | SLP - Sign Easement                                   |
| FHE - Fire Hydrant Easement                        | SLS - Salt Water Line Easement                        |
| FPE - Fire Line/Protection Easement                | SSE - Sanitary Sewer Easement                         |
| FSUWE - Fence Setback and Utility Working Easement | SUL - Street Use License                              |
| GD - GR Deed                                       | SWE - Underground Stormwater Line Easement            |
| GFE - Gas Facilities Easement                      | SWS - Stormwater Storage Easement                     |
| GSE - Garbage Service/Collection Easement          | TAC - Telephone Apparatus Cabinet Easement            |
| GTE - Gas Meter and Telephone Pedestal Easement    | TPE - Transformer Pad Easement                        |
| GWE - Guy Wire Easement                            | UCE - Underground Communications Line Easement        |
| IEE - Rights-Egress Easement                       | UE - Utility Easement                                 |
| JBE - Junction Box Easement                        | UEE - Underground Electric Line Easement              |
| JUD - Judgment/Agreed Judgment                     | UGE - Underground Gas Line Easement                   |
| LANDSE - Landscape Easement                        | USE - Underground Street Light Cable Easement         |
| LSE - Lift Station Easement                        | UUE - Underground Utility, Pedestal, & Meter Easement |
| LL - Land Use License                              | UVE - Underground Vault Easement                      |
| MAE - Maintenance Access Easement                  | UWE - Underground Water Line Easement                 |
| MHE - Manhole Easement                             | UWSE - Underground Water & Sewer Line Easement        |
| MWP - Monitor Well Permit                          | VAC - Vacated Plat                                    |
| NAME - Street Name Change                          | WD - Warranty Deed                                    |
| OC - Overhead Communications Line Easement         | WELL - Well Easement                                  |
| OHE - Overhang Easement                            | WW - Underground Waste Water Line Easement            |

1914

1572



PLEASE VERIFY ALL DIMENSIONS AND RIGHT OF WAY INFORMATION WITH OFFICIAL PLATS AND SEPARATE INSTRUMENT DOCUMENTS.

1740

As required by SECTION 1, CHAPTER 2051, SUBCHAPTER D, GEOSPATIAL DATA PRODUCTS of the Government Code, the City of Lubbock hereby provides notice that the data on this map was created by the City of Lubbock. Any data that appears to represent property boundaries is for informational purposes and may not have been prepared or be suitable for legal, engineering, or surveying purposes. It does not represent an on-the-ground survey and represents only the approximate relative location of property boundaries.

Public Works Engineering  
 P O Box 2000  
 1625 13th Street  
 Lubbock, TX 79457

Reference Scale: 1:1,200  
 Date: 4/14/2025

Base Map 266  
 Block-Section JS-18

**ROW**  
SECTIONAL MAP

**1739**