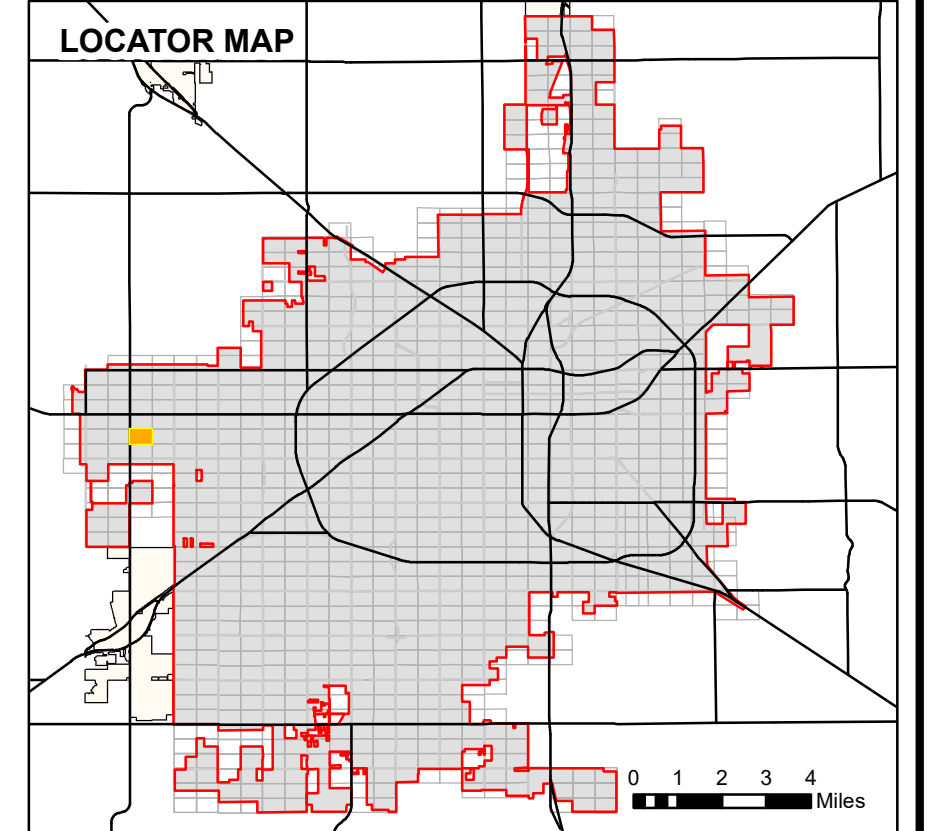
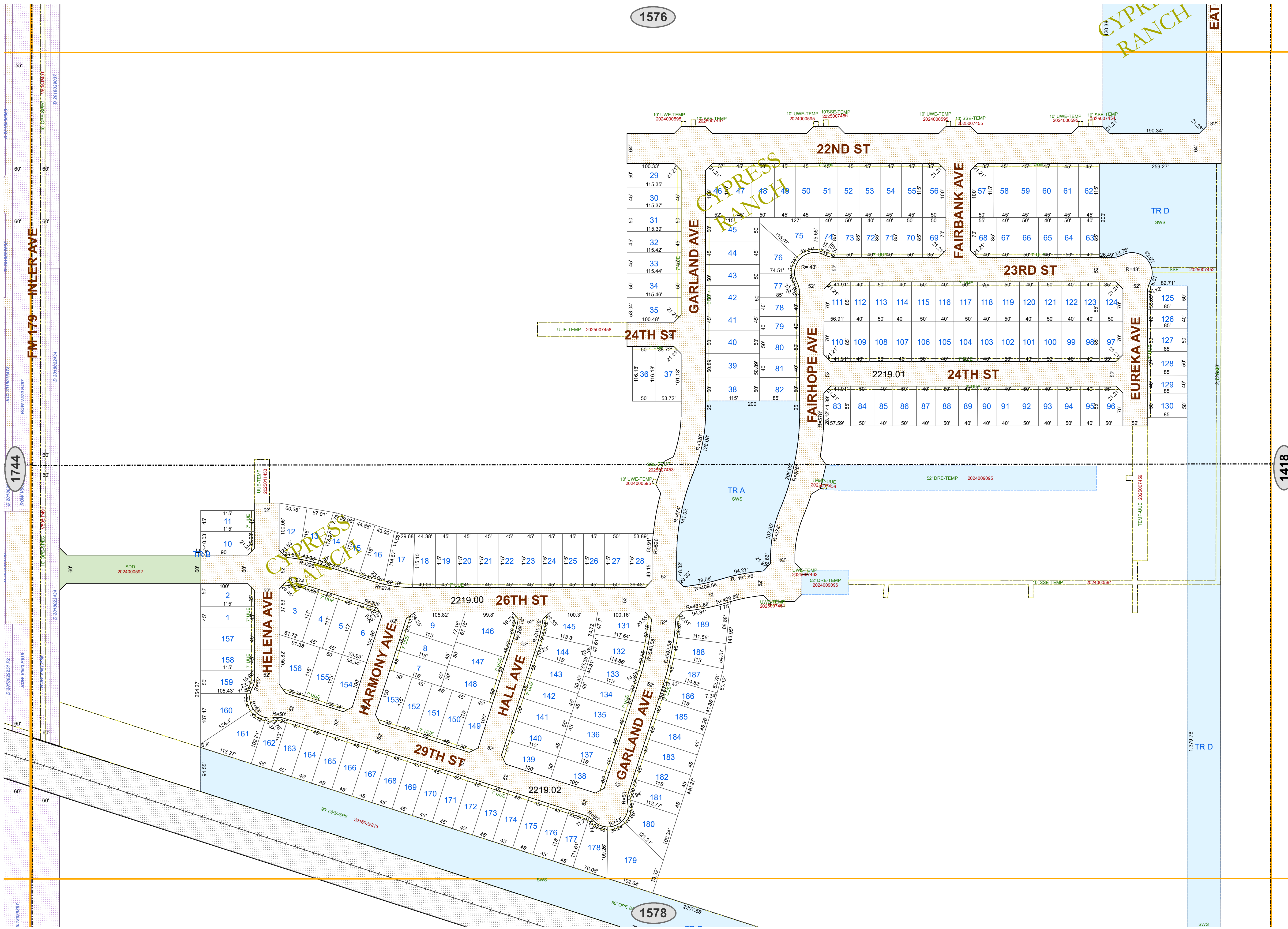


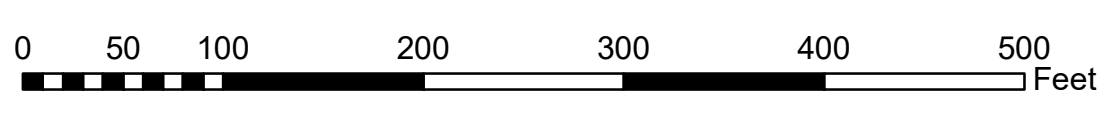
1576

1577



- Lot Lines
- Block Lines
- Railroad Track
- ROW Subsections
- City Limits
- Use License
- Utility, Access, or Garbage Service Easement
- Utility Equipment Easement
- Stormwater Line Easement
- Drainage Easement
- Street Dedication Deed
- Alley Dedication Deed
- Park Dedication Deed
- Property Acquisition Deed
- Property Divestiture Deed
- Right-of-Way Easement
- Plat Dedicated Right-of-Way
- Railroad Deed or Spur Easement
- State Deed or Right-of-Way Easement
- Closed/Abandoned by Ordinance
- Neighboring Map Number

- NOTES:
- All radii are 15' unless otherwise noted.
  - See plat files for curve data and misc. dimensions not shown for clarity.
  - Abbreviations:
- |  |  |
|--|--|
| AC - Closed Alley                                  | OPE - Overhead Power Line Easement                     |
| ACE - Access/Easement                              | OPSP - Open Space Easement                             |
| ADD - Alley Dedication Deed                        | ORD - Ordinance  |
| ALE - Alley Use License                            | PAE - Pedestrian Access Easement                       |
| BSE - Bus Shelter Easement                         | PDD - Park Dedication Deed                             |
| CAE - Closed Access Easement                       | PEE - Pedestal Easement                                |
| CDE - Closed Drainage Easement                     | PETL - Petroleum/Oil Line Easement                     |
| CCE - Communications Equipment Easement            | PPP - Primary Flexibility Point Easement               |
| CGE - Closed Garbage Service Easement              | PUD - Public Use Dedication Easement                   |
| CRAE - Cross Access Easement                       | QCD - Quit Claim Deed                                  |
| CUE - Closed Utility Easement                      | REL - Release  |
| DD - Dedication Deed                               | RES - Resolusion                                       |
| DPE - Dumpster Pad Easement                        | ROE - Release of Easement                              |
| DRD - Drainage Ditch Easement                      | ROW - Right of Way Easement                            |
| DRE - Drainage Easement                            | RPZ - Runway Protection Zone Easement                  |
| DUE - Drainage & Underground Utility Easement      | RRD - Railroad Deed                                    |
| DWOV - Deed Without Warranty                       | RSE - Railroad Spur Easement                           |
| EDE - Emission Disposal Building                   | RUE - Railroad Utility Easement                        |
| ESMT - Easement (Unspecified)                      | SAT - Service Area Interface Easement                  |
| EUL - Easement Use License                         | SBS - Substation Easement                              |
| EVAE - Emergency Vehicle Access Easement           | SC - Closed Street                                     |
| EXCH - Exchange Deed                               | SDD - Street Dedication Deed                           |
| FE - Fence Easement                                | SEE - Sealing Enclosure Easement                       |
| FHE - Fire Hydrant Easement                        | SGN - Sign Easement                                    |
| FLE - Fire Line/Protection Easement                | SLE - Sillwalk Easement                                |
| FSUWE - Fence Setback and Utility Working Easement | SLS - Slope Easement                                   |
| GD - GR Deed                                       | SRT - Salt Water Line Easement                         |
| GFE - Gas Facilities Easement                      | SSE - Sanitary Sewer Easement                          |
| GSE - Garbage Service/Collection Easement          | SUL - Street Use License                               |
| GTE - Gas Meter and Telephone Pedestal Easement    | SWE - Underground Stormwater Line Easement             |
| GWE - Guy Wire Easement                            | SWS - Stormwater Storage Easement                      |
| IEE - Ingress-Egress Easement                      | TAC - Telephone Apparatus Cabinet Easement             |
| JBE - Junction Box Easement                        | TPE - Transformer Pad Easement                         |
| JUD - Judgment/Agreed Building Easement            | UCE - Underground Communications Line Easement         |
| LDSE - Landscape Easement                          | UE - Utility Easement                                  |
| LSE - Lift Station Easement                        | UEE - Underground Electric Line Easement               |
| LLL - Land Use License                             | UGE - Underground Gas Line Easement                    |
| MAE - Maintenance Access Easement                  | UGSE - Underground Street Light Cable Easement         |
| MHE - Manhole Easement                             | UJE - Underground Utility Easement                     |
| MWP - Monitor Well Permit                          | UJUE - Underground Utility, Pedestal, & Meter Easement |
| NAME - Street Name Change                          | UVE - Underground Vault Easement                       |
| OC - Overhead Communications Line Easement         | UWE - Underground Water Line Easement                  |
| OHE - Overhang Easement                            | UWSE - Underground Water & Sewer Line Easement         |
|  | VAC - Vacated Plat                                     |
|  | WD - Warranty Deed                                     |
|  | WEL - Well Easement                                    |
|  | WWE - Underground Waste Water Line Easement            |



PLEASE VERIFY ALL DIMENSIONS AND RIGHT OF WAY INFORMATION WITH OFFICIAL PLATS AND SEPARATE INSTRUMENT DOCUMENTS.

As required by SECTION 1, CHAPTER 2051, SUBCHAPTER D, GEOSPATIAL DATA PRODUCTS of the Government Code, the City of Lubbock hereby provides notice that the data on this map was created by the City of Lubbock. Any data that appears to represent property boundaries is for informational purposes and may not have been prepared or be suitable for legal, engineering, or surveying purposes. It does not represent an on-the-ground survey and represents only the approximate relative location of property boundaries.

Public Works Engineering  
 P O Box 2000  
 1625 13th Street  
 Lubbock, TX 79457

Reference Scale: 1:1,200  
 Date: 4/14/2025

Base Map 203  
 Block-Section AK-41

**ROW SECTIONAL MAP**  
**1577**