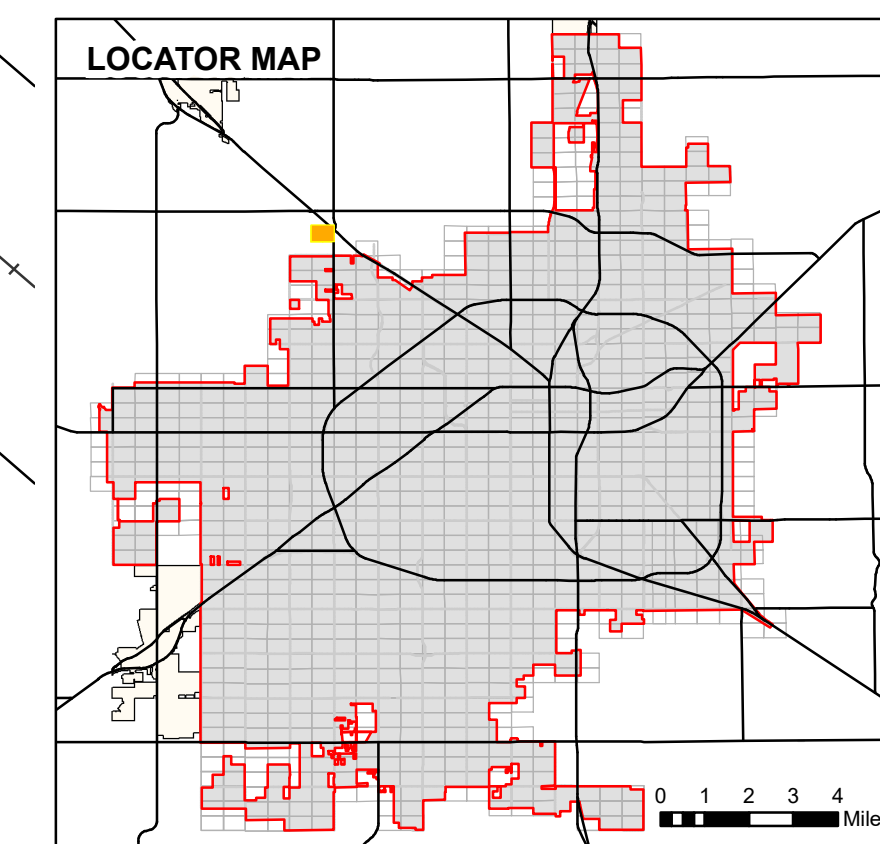




687

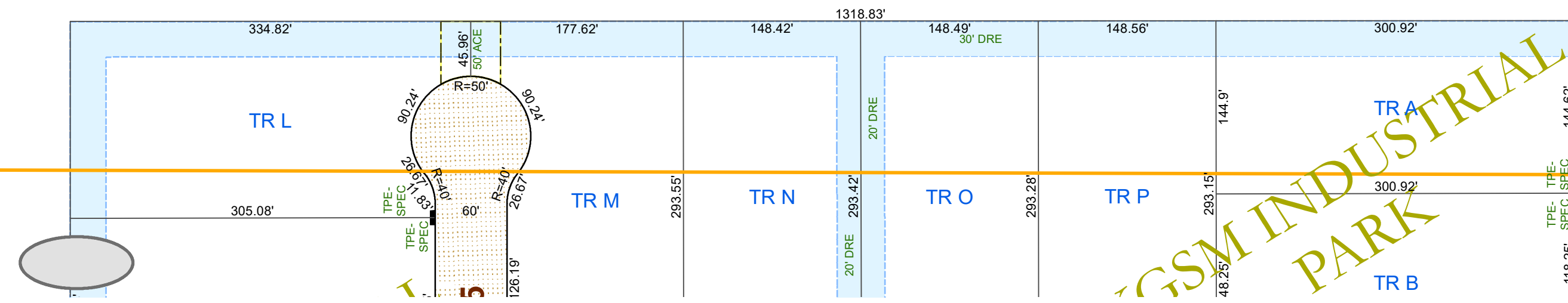
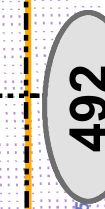
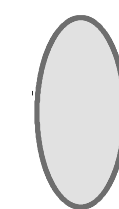
493



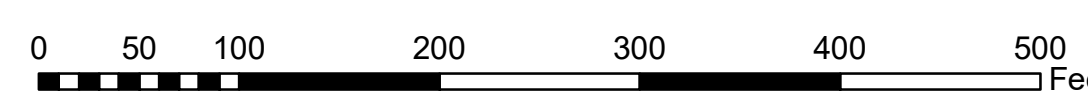
- Lot Lines
- Block Lines
- Railroad Track
- ROW Subsections
- City Limits
- Use License
- Utility, Access, or Garbage Service Easement
- Utility Equipment Easement
- Stormwater Line Easement
- Drainage Easement
- Street Dedication Deed
- Alley Dedication Deed
- Park Dedication Deed
- Property Acquisition Deed
- Property Divestiture Deed
- Right-of-Way Easement
- Plat Dedicated Right-of-Way
- Railroad Deed or Spur Easement
- State Deed or Right-of-Way Easement
- Closed/Abandoned by Ordinance
- Neighboring Map Number

- NOTES:
- All radii are 15' unless otherwise noted.
 - See plat files for curve data and misc. dimensions not shown for clarity.
 - Abbreviations:

- | | |
|--|---|
| AC - Closed Alley | OPSP - Open Space Easement |
| ACE - Access/Public Access Easement | ORD - Ordinance |
| ADD - Alley Dedication Deed | PAC - Pedestrian Access Easement |
| AUL - Alley Use License | PDD - Park Dedication Deed |
| BSE - Bus Shelter Easement | PEE - Pedestal Easement |
| CAE - Closed Access Easement | RET - Petroleum/Oil Line Easement |
| CDE - Closed Drainage Easement | PPP - Primary Flexibility Point Easement |
| CEE - Communications Equipment Easement | PUD - Public Use Dedication Easement |
| CGE - Closed Garbage Service Easement | QCD - Quit Claim Deed |
| CRAE - Cross Access Easement | REL - Release |
| CUE - Closed Utility Easement | RES - Resolution |
| DD - Dedication Deed | ROE - Release of Easement |
| DPE - Dumpster Pad Easement | ROW - Right of Way Easement |
| DRD - Drainage Ditch Easement | RPZ - Runway Protection Zone Easement |
| DRE - Drainage Easement | RSD - Railroad Deed |
| DUE - Drainage & Underground Utility Easement | RSE - Railroad Spur Easement |
| DWOW - Deed Without Warranty | SAI - Service Area Interface Easement |
| EDE - Emission Disposal Building | SBE - Substation Easement |
| ESMT - Easement (Unspecified) | SC - Closed Street |
| EUL - Easement Use License | SDD - Street Dedication Deed |
| EVAE - Emergency Vehicle Access Easement | SEE - Sealing Enclosure Easement |
| EXCH - Exchange Deed | SE - Sealing Enclosure Easement |
| FE - Fence Easement | SLP - Skips Easement |
| FHE - Fire Hydrant Easement | SLS - Salt Water Line Easement |
| FPE - Fire Line/Protection Easement | SSE - Sanitary Sewer Easement |
| FSUWE - Fence Setback and Utility Working Easement | SUL - Street Line License |
| GD - GR Deed | SWE - Underground Stormwater Line Easement |
| GFE - Gas Facilities Easement | SWS - Stormwater Storage Easement |
| GSE - Garbage Service/Collection Easement | TAC - Telephone Apparatus Cabinet Easement |
| GTE - Gas Meter and Telephone Pedestal Easement | TPE - Transformer Pad Easement |
| GW - Guy Wire Easement | UE - Utility Easement |
| IEE - Ingress-Egress Easement | UEE - Underground Electric Line Easement |
| JBE - Junction Box Easement | UGE - Underground Gas Line Easement |
| JUD - Judgment/Agreed Judgment | UUE - Underground Street Light Cable Easement |
| LANDSE - Landscape Easement | UUE - Underground Utility Easement |
| LSE - Lift Station Easement | UUE - Underground Utility, Pedestal, & Meter Easement |
| LLL - Land Use License | UUE - Underground Vault Easement |
| MAE - Maintenance Access Easement | UWE - Underground Water Line Easement |
| MHE - Manhole Easement | UWSE - Underground Water & Sewer Line Easement |
| MWP - Monitor Well Permit | VAC - Vacated Plat |
| NAME - Street Name Change | WD - Warranty Deed |
| OC - Overhead Communications Line Easement | WELL - Well Easement |
| OHE - Overhang Easement | WWE - Underground Waste Water Line Easement |



GSM INDUSTRIAL PARK



PLEASE VERIFY ALL DIMENSIONS AND RIGHT OF WAY INFORMATION WITH OFFICIAL PLATS AND SEPARATE INSTRUMENT DOCUMENTS.

As required by SECTION 1, CHAPTER 2051, SUBCHAPTER D, GEOSPATIAL DATA PRODUCTS of the Government Code, the City of Lubbock hereby provides notice that the data on this map was created by the City of Lubbock. Any data that appears to represent property boundaries is for informational purposes and may not have been prepared or be suitable for legal, engineering, or surveying purposes. It does not represent an on-the-ground survey and represents only the approximate relative location of property boundaries.

Public Works Engineering
 P O Box 2000
 1625 13th Street
 Lubbock, TX 79457

Reference Scale: 1:1,200
 Date: 4/4/2024

Base Map 73
 Block-Section JS-23

ROW SECTIONAL MAP

493