

284

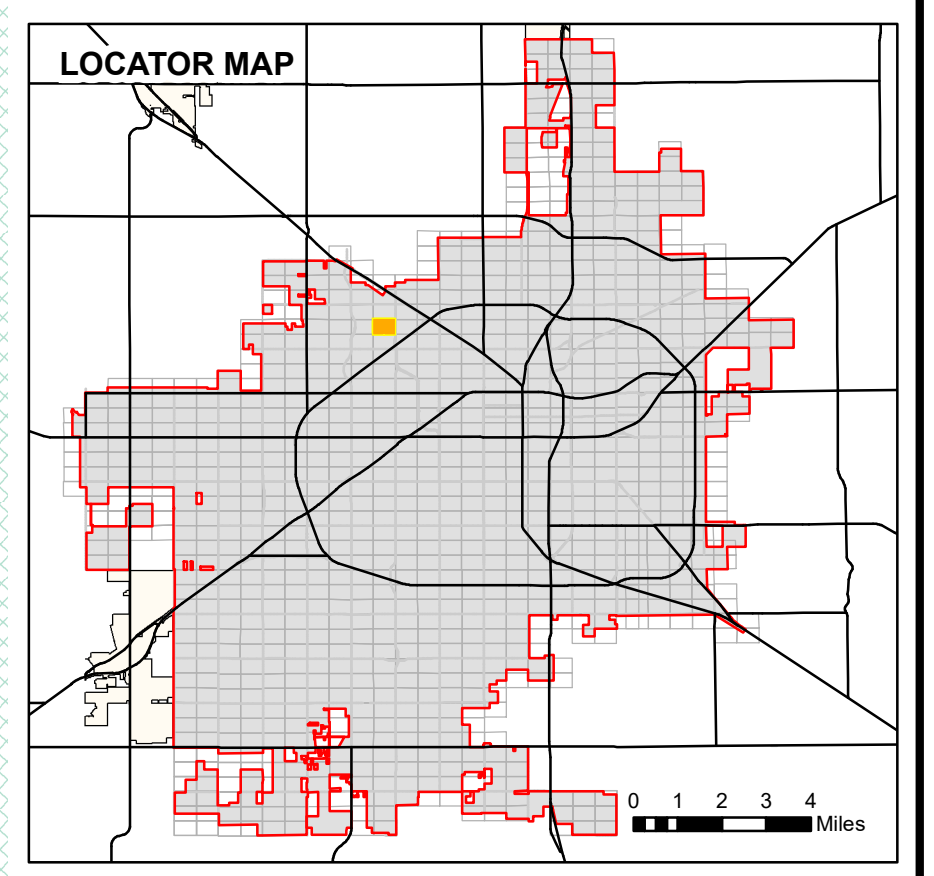
291

WILDWOOD

UNSUBDIVIDED

2247.00

1979.00

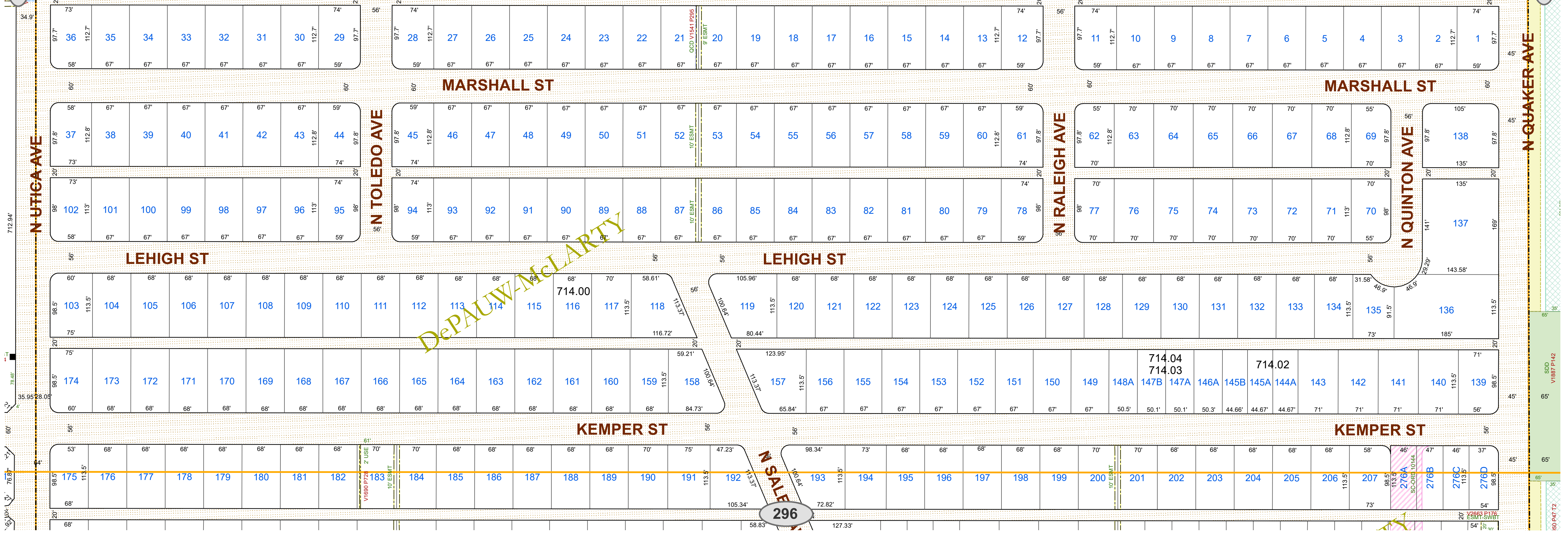


- Lot Lines
- Block Lines
- Railroad Track
- ROW Subsections
- City Limits
- Use License
- Utility, Access, or Garbage Service Easement
- Utility Equipment Easement
- Stormwater Line Easement
- Drainage Easement
- Street Dedication Deed
- Alley Dedication Deed
- Park Dedication Deed
- Property Acquisition Deed
- Property Divestiture Deed
- Right-of-Way Easement
- Plat Dedicated Right-of-Way
- Railroad Deed or Spur Easement
- State Deed or Right-of-Way Easement
- Closed/Abandoned by Ordinance
- Neighboring Map Number

- NOTES:
- All radii are 15' unless otherwise noted.
  - See plat files for curve data and misc. dimensions not shown for clarity.
  - Abbreviations:
- |  |   |
|--|---|
| AC - Closed Alley                                  | OPR - Overhead Power Line Easement                    |
| ACE - Access/Public Access Easement                | OSPE - Open Space Easement                            |
| ADD - Alley Dedication Deed                        | ORD - Ordinance                                       |
| AUE - Alley Use License                            | PAE - Pedestrian Access Easement                      |
| BSE - Bus Shelter Easement                         | PDD - Park Dedication Deed                            |
| CAE - Closed Access Easement                       | PEE - Pedestal Easement                               |
| CDE - Closed Drainage Easement                     | PETE - Petroleum/Oil Line Easement                    |
| CCE - Communications Equipment Easement            | PPP - Primary Flexibility Point Easement              |
| COE - Closed Garbage Service Easement              | PUD - Public Use Dedication Easement                  |
| CRAE - Cross Access Easement                       | QCD - Quit Claim Deed                                 |
| CUE - Closed Utility Easement                      | REL - Release   |
| DD - Dedication Deed                               | RES - Resolution                                      |
| DPE - Dumpster Pile Easement                       | ROE - Release of Easement                             |
| DRD - Drainage Ditch Easement                      | ROW - Right of Way Easement                           |
| DRE - Drainage Easement                            | RPZ - Runway Protection Zone Easement                 |
| DUE - Drainage & Underground Utility Easement      | RSE - Railroad Spur Easement                          |
| DWOW - Closed Without Warranty                     | SAI - Service Area Interface Easement                 |
| EDC - Emission Disposal Building                   | SBST - Substation Easement                            |
| ESMT - Easement (Unspecified)                      | SC - Closed Street                                    |
| EUL - Easement Use License                         | SDS - Street Dedication Deed                          |
| EVAE - Emergency Vehicle Access Easement           | SEE - Sealing Enclosure Easement                      |
| EXCH - Exchange Deed                               | SEE - Sealing Enclosure Easement                      |
| FE - Fence Easement                                | SLE - Sign Easement                                   |
| FHE - Fire Hydrant Easement                        | SLS - Sign License                                    |
| FPE - Fire Line/Protection Easement                | SSE - Sanitary Sewer Easement                         |
| FSUWE - Fence Setback and Utility Working Easement | SUL - Street Use License                              |
| GD - GR Deed                                       | SWE - Underground Stormwater Line Easement            |
| GFE - Gas Facilities Easement                      | SWS - Stormwater Storage Easement                     |
| GSE - Gas Service/Collection Easement              | TAC - Telephone Apparatus Cabinet Easement            |
| GTE - Gas Meter and Telephone Pedestal Easement    | TPE - Transformer Pad Easement                        |
| GWE - Guy Wire Easement                            | UE - Utility Easement                                 |
| IGEE - Ingress-Egress Easement                     | UEE - Underground Electric Line Easement              |
| JBE - Junction Box Easement                        | UGE - Underground Gas Line Easement                   |
| JUD - Judgment/Agreed Judgment                     | UGSE - Underground Street Light Cable Easement        |
| LSDE - Landscaping Easement                        | UUE - Underground Utility, Pedestal, & Meter Easement |
| LSE - Lift Station Easement                        | UWE - Underground Water Line Easement                 |
| LLE - Land Use License                             | UWSE - Underground Water & Sewer Line Easement        |
| MAE - Maintenance Access Easement                  | VAC - Vacated Plat                                    |
| MHE - Manhole Easement                             | WD - Warranty Deed                                    |
| MWP - Monitor Well Permit                          | WLL - Well Easement                                   |
| NAME - Street Name Change                          | WWE - Underground Waste Water Line Easement           |
| OCE - Overhead Communications Line Easement        |   |
| OHE - Overhang Easement                            |   |

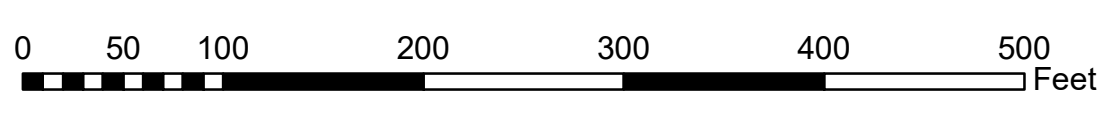
292

290



DePAUW-McLARTY

296



PLEASE VERIFY ALL DIMENSIONS AND RIGHT OF WAY INFORMATION WITH OFFICIAL PLATS AND SEPARATE INSTRUMENT DOCUMENTS.

As required by SECTION 1, CHAPTER 2051, SUBCHAPTER D, GEOSPATIAL DATA PRODUCTS of the Government Code, the City of Lubbock hereby provides notice that the data on this map was created by the City of Lubbock. Any data that appears to represent property boundaries is for informational purposes and may not have been prepared or be suitable for legal, engineering, or surveying purposes. It does not represent an on-the-ground survey and represents only the approximate relative location of property boundaries.

Public Works Engineering  
 P O Box 2000  
 1625 13th Street  
 Lubbock, TX 79457

City of Lubbock  
 TEXAS

Reference Scale: 1:1,200  
 Date: 4/14/2025

Base Map 21  
 Block-Section JS-5

**ROW**  
**SECTIONAL MAP**

**291**