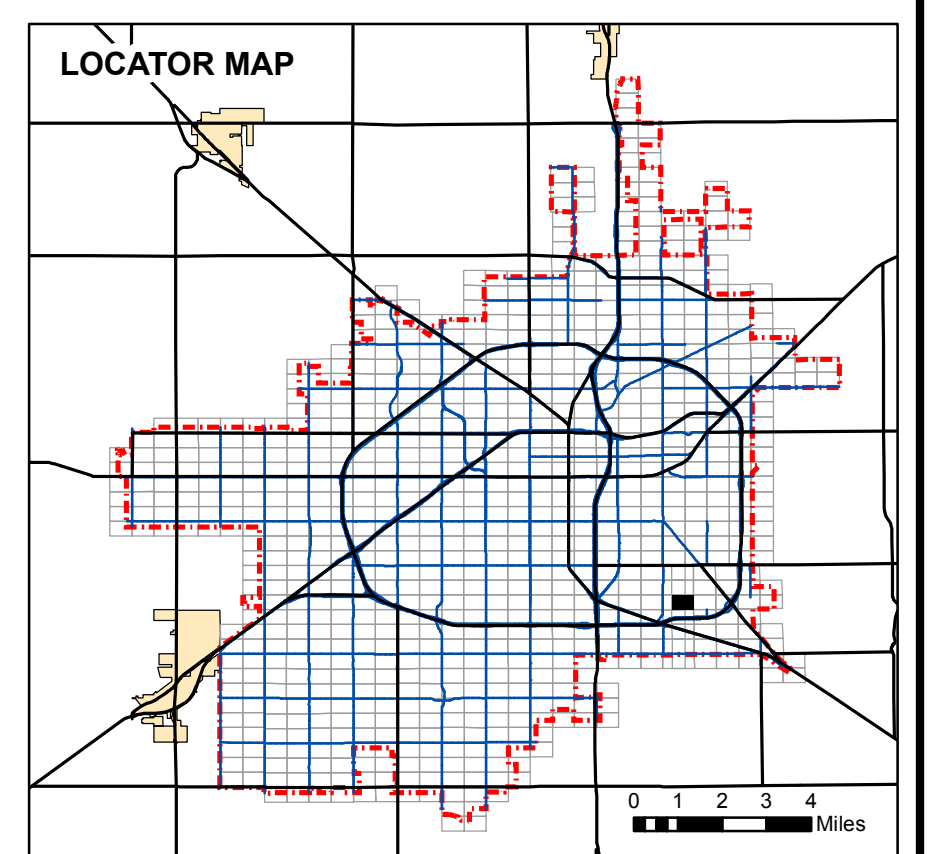
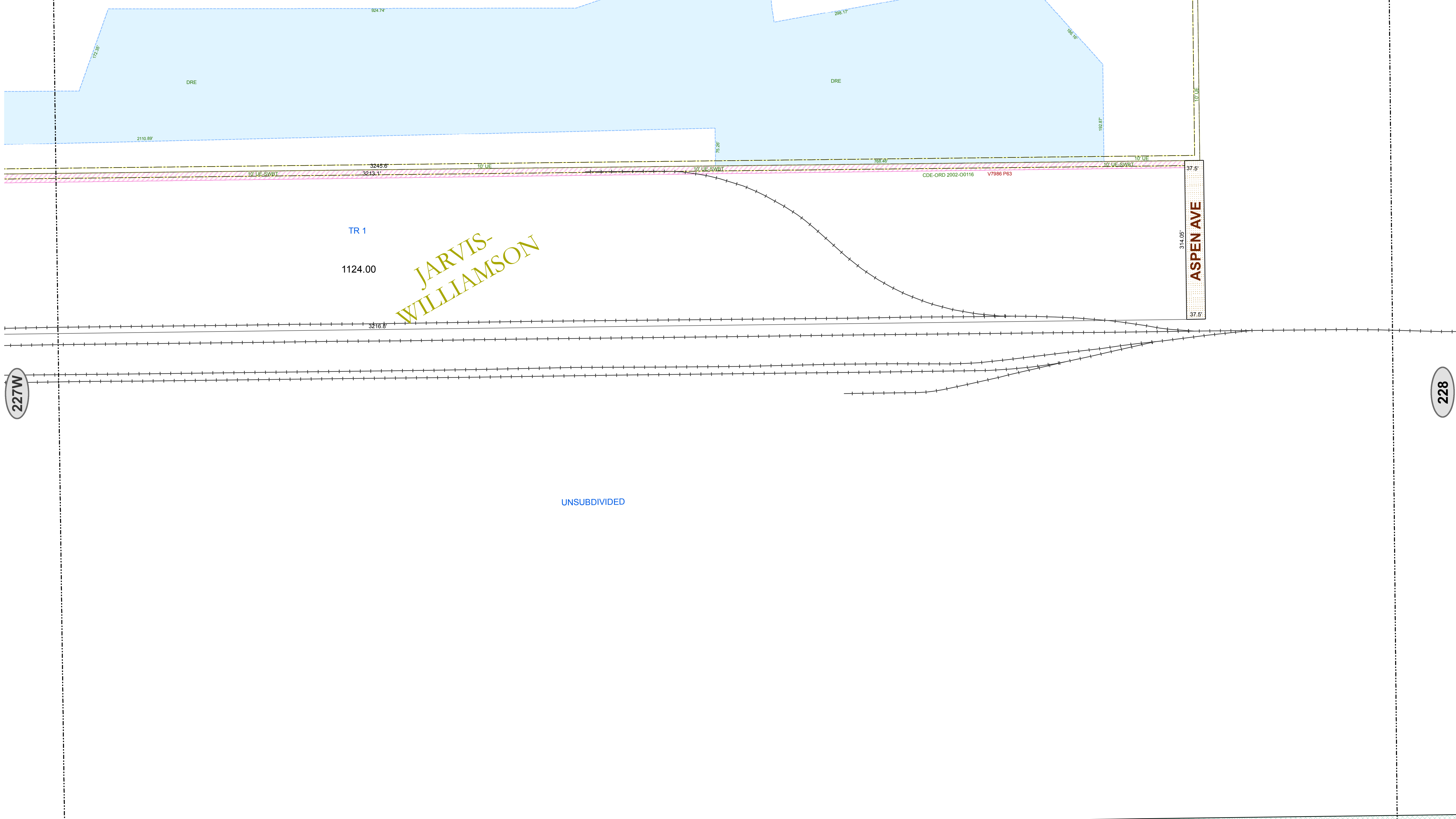


TRA  
1515.01  
1515.00

SOUTH PLAINS INDU

224W

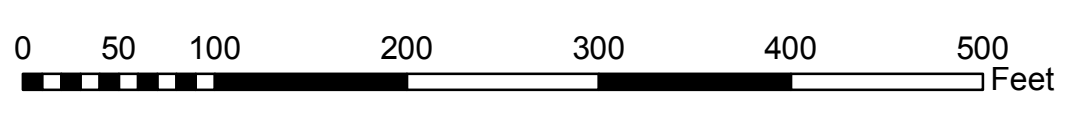
227E



- LEGEND**
- Alley Dedication Deed
  - City Limits
  - Closed/Abandoned by Ordinance
  - Drainage Easement
  - Park Dedication Deed
  - Plat Dedicated Right-of-Way
  - Property Acquisition Deed
  - Property Divestiture Deed
  - Railroad Deed or Spur Easement
  - Railroad Track
  - Right-of-Way Easement
  - Section Line
  - State Deed or Right-of-Way Easement
  - Stormwater Line Easement
  - Street Dedication Deed
  - Use License
  - Utility, Access, or Garbage Service Easement
  - Utility Equipment Easement
  - Neighboring Map Number

- NOTES:**
- All radii are 15' unless otherwise noted.
  - See plat files for curve data and misc. dimensions not shown for clarity.
  - Abbreviations:

- |  |  |
|--|--|
| AC - Closed Alley                                  | PAE - Pedestrian Access Easement                           |
| ACE - Access/Public Access Easement                | POD - Park Dedication Deed                                 |
| ADD - Alley Dedication Deed                        | PED - Pedestal Easement                                    |
| AL - Alley Use License                             | PETE - Petroleum/CH Line Easement                          |
| BSE - Bus Shelter Easement                         | PPP - Primary Flexibility Point Easement                   |
| CAE - Closed Access Easement                       | PUSD - Public Use Dedication Easement                      |
| CDE - Closed Drainage Easement                     | QCD - Quit Claim Deed                                      |
| CEE - Communications Equipment Easement            | REL - Release  |
| CGE - Closed Garbage Service Easement              | RES - Resolution   |
| CUE - Closed Utility Easement                      | RCE - Release of Easement                                  |
| DD - Dedication Deed                               | ROW - Right of Way Easement                                |
| DD - Drainage Ditch Easement                       | RPZ - Runway Protection Zone Easement                      |
| DRE - Drainage Easement                            | RSD - Railroad Deed  |
| DUE - Drainage & Underground Utility Easement      | RSE - Railroad Spur Easement                               |
| DWOW - Deed Without Warranty                       | RSV - Easement Reservation                                 |
| EDC - Emission Disposal Building                   | SAI - Service Area Interface Easement                      |
| ESMT - Easement (Unspecified)                      | SBSST - Substation Easement                                |
| EUL - Easement Use License                         | SC - Closed Street   |
| EWAE - Emergency Vehicle Access Easement           | SDO - Street Dedication Deed                               |
| EXCH - Exchange Deed                               | SEE - Setback Enclosure Easement                           |
| FE - Fence Easement                                | SIGN - Sign Easement                                       |
| FHE - Fire Hydrant Easement                        | SLE - Sidewalk Easement                                    |
| FPE - Fire Line/Protection Easement                | SLP - Slope Easement                                       |
| FSUWE - Fence Setback and Utility Working Easement | SLT - Salt Water Line Easement                             |
| GD - Gift Deed                                     | SSE - Sanitary Sewer Easement                              |
| GFE - Gas Facilities Easement                      | SUL - Street Use License                                   |
| GSE - Garbage Service/Collection Easement          | SWS - Underground Stormwater Line Easement                 |
| GTE - Gas Meter and Telephone Pedestal Easement    | SWSS - Stormwater Storage Easement                         |
| GW - Guy Wire Easement                             | TAC - Telephone Apparatus Cabinet Easement                 |
| IEE - Ingress/Egress Easement                      | TPE - Transformer Pad Easement                             |
| JUD - Judgment/Agreed Judgment                     | UCE - Underground Communications Line Easement             |
| LMSSE - Landscape Easement                         | UE - Utility Easement                                      |
| LSE - Lift Station Easement                        | UEE - Underground Electric Line Easement                   |
| LU - Land Use License                              | UGE - Underground Gas Line Easement                        |
| MAE - Maintenance Access Easement                  | UUE - Underground Utility Easement                         |
| MHE - Manhole Easement                             | UJPMSE - Underground Utility, Pedestal, & Manhole Easement |
| MWP - Monitor Well Permit                          | UVL - Underground Vault Easement                           |
| NAME - Street Name Change                          | UWL - Underground Water Line Easement                      |
| OCE - Overhead Communications Line Easement        | UWSE - Underground Water & Sewer Line Easement             |
| OHE - Overhang Easement                            | VAC - Vacated Plat   |
| OPE - Overhead Power Line Easement                 | WD - Warranty Deed   |
| OPNSP - Open Space Easement                        | WELL - Well Easement                                       |
| ORD - Ordinance                                    | WWE - Underground Waste Water Line Easement                |



PLEASE VERIFY ALL DIMENSIONS AND RIGHT OF WAY INFORMATION WITH OFFICIAL PLATS AND SEPARATE INSTRUMENT DOCUMENTS.

As required by SECTION 1, CHAPTER 2051, SUBCHAPTER D, GEOSPATIAL DATA PRODUCTS of the Government Code, the City of Lubbock hereby provides notice that the data on this map was created by the City of Lubbock. Any data that appears to represent property boundaries is for informational purposes and may not have been prepared or be suitable for legal, engineering, or surveying purposes. It does not represent an on-the-ground survey and represents only the approximate relative location of property boundaries.

Public Works Engineering  
P O Box 2000  
1625 13th Street  
Lubbock, TX 79457

Reference Scale: 1:1,200  
Date: 5/19/2014

Base Map **56**  
Block-Section **S-2**

**ROW**  
SECTIONAL MAP

**227E**