

**HORIZONTAL & VERTICAL CONTROL FOR  
LUBBOCK, TEXAS  
JANUARY, 2000**

**HORIZONTAL DATUM NAD83 VERTICAL DATUM NAVD 88**

PT NO	NORTHING	EASTING	ELEVATION	WGS84 LAT	WGS84 LONG	ELLIP HGHT
1513	7277991.582	968075.767	3189.24	33°35'33.24685"N	101°47'09.08463"W	3101.81

**HORIZONTAL DATUM NAD27 VERTICAL DATUM NGVD 29**

PT NO	NORTHING	EASTING	ELEVATION	WGS84 LAT	WGS84 LONG	ELLIP HGHT
1513	727239.569	695366.865	3187.97	33°35'33.24687"N	101°47'09.08465"W	3101.82

**POINT DESCRIPTION**

**PK NAIL**

*LUBBOCK EAST  
#1513*

**U  
S  
G  
S**

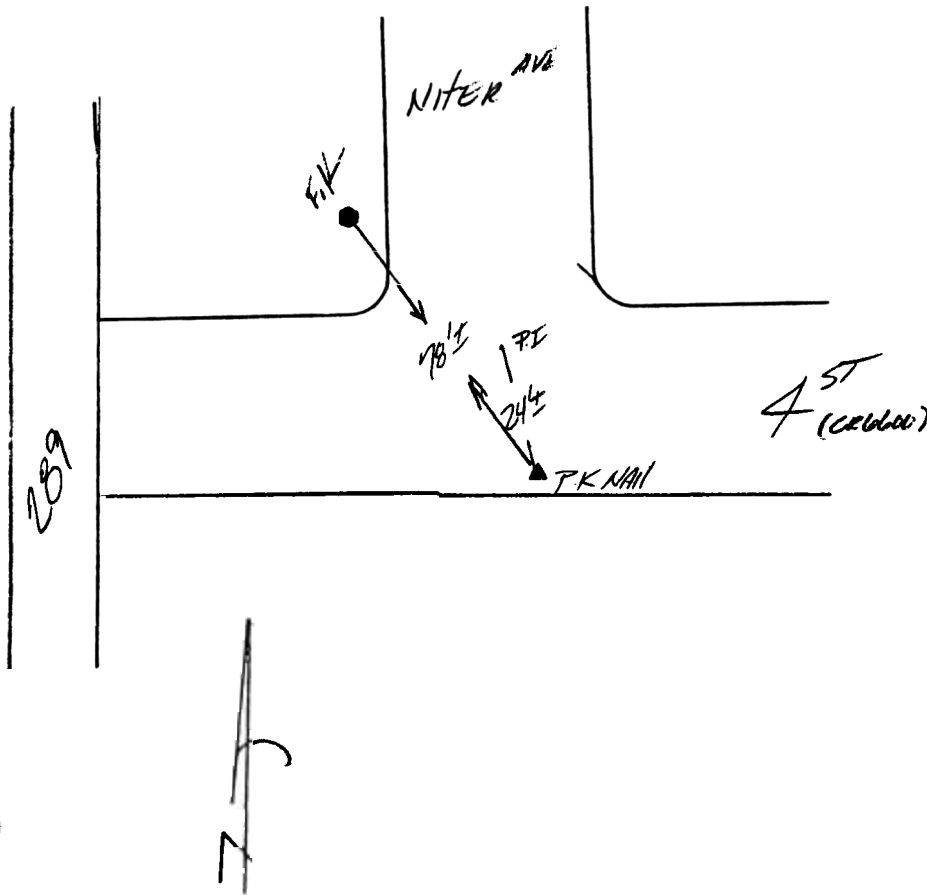
**Q  
U  
A  
D**

**P  
O  
I  
N  
T**

**M  
A  
P  
N  
U  
M  
B  
E  
R**

**L  
U  
B  
B  
O  
C  
K  
1  
5  
1  
3**

**E  
A  
S  
T**



**HORIZONTAL & VERTICAL CONTROL FOR  
LUBBOCK, TEXAS  
JANUARY, 2000**

**HORIZONTAL DATUM NAD83 VERTICAL DATUM NAVD 88**

PT NO	NORTHING	EASTING	ELEVATION	WGS84 LAT	WGS84 LONG	ELLIP HGHT
1514	7281040.526	966750.889	3194.79	33°36'02.98780"N	101°47'25.86864"W	3107.33

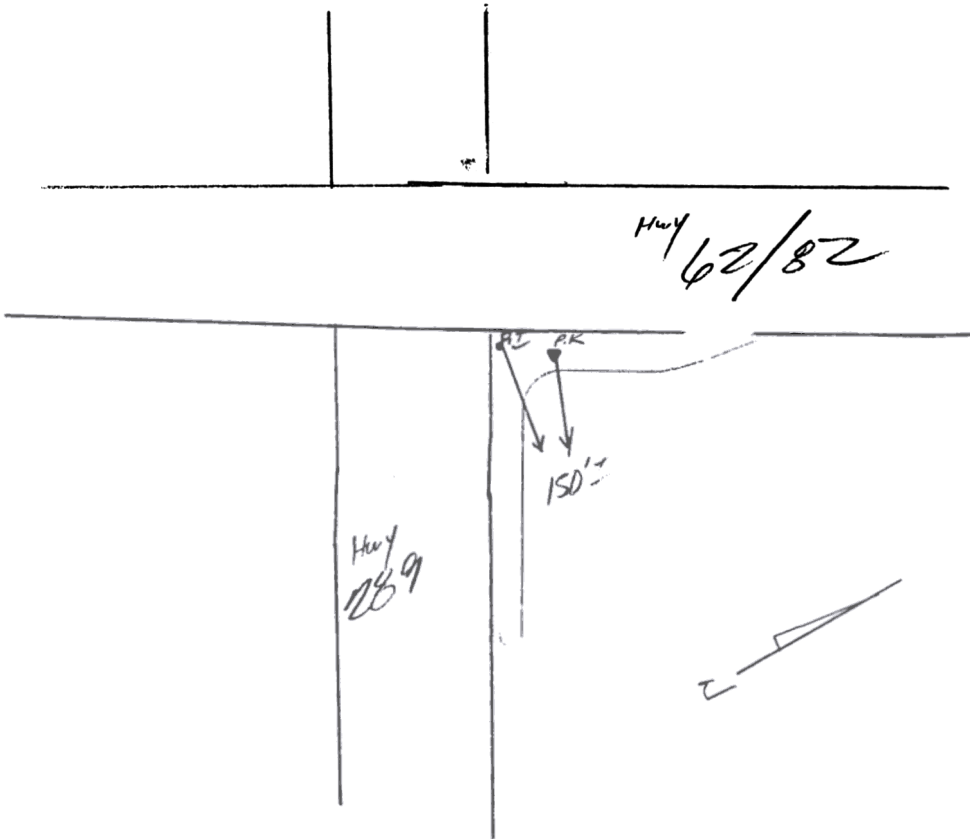
**HORIZONTAL DATUM NAD27 VERTICAL DATUM NGVD 29**

PT NO	NORTHING	EASTING	ELEVATION	WGS84 LAT	WGS84 LONG	ELLIP HGHT
1514	730300.970	694071.133	3193.52	33°36'02.98782"N	101°47'25.86865"W	3107.35

**POINT DESCRIPTION**

**PK NAIL**

*Lubbock East  
#1514*



**U  
S  
G  
S**

**P  
O  
I  
N  
T  
Q  
U  
A  
N  
T**

**M  
A  
P  
N  
U  
M  
B  
E  
R**

**L  
U  
B  
B  
O  
C  
K  
1  
5  
1  
4**

**E  
A  
S  
T**

# HORIZONTAL & VERTICAL CONTROL FOR LUBBOCK, TEXAS JANUARY, 2000

HORIZONTAL DATUM NAD83 VERTICAL DATUM NAVD 88

PT NO	NORTHING	EASTING	ELEVATION	WGS84 LAT	WGS84 LONG	ELLIP HGHT
1485	7283246.309	969274.253	3196.09	33°36'25.58161"N	101°46'56.86321"W	3108.56

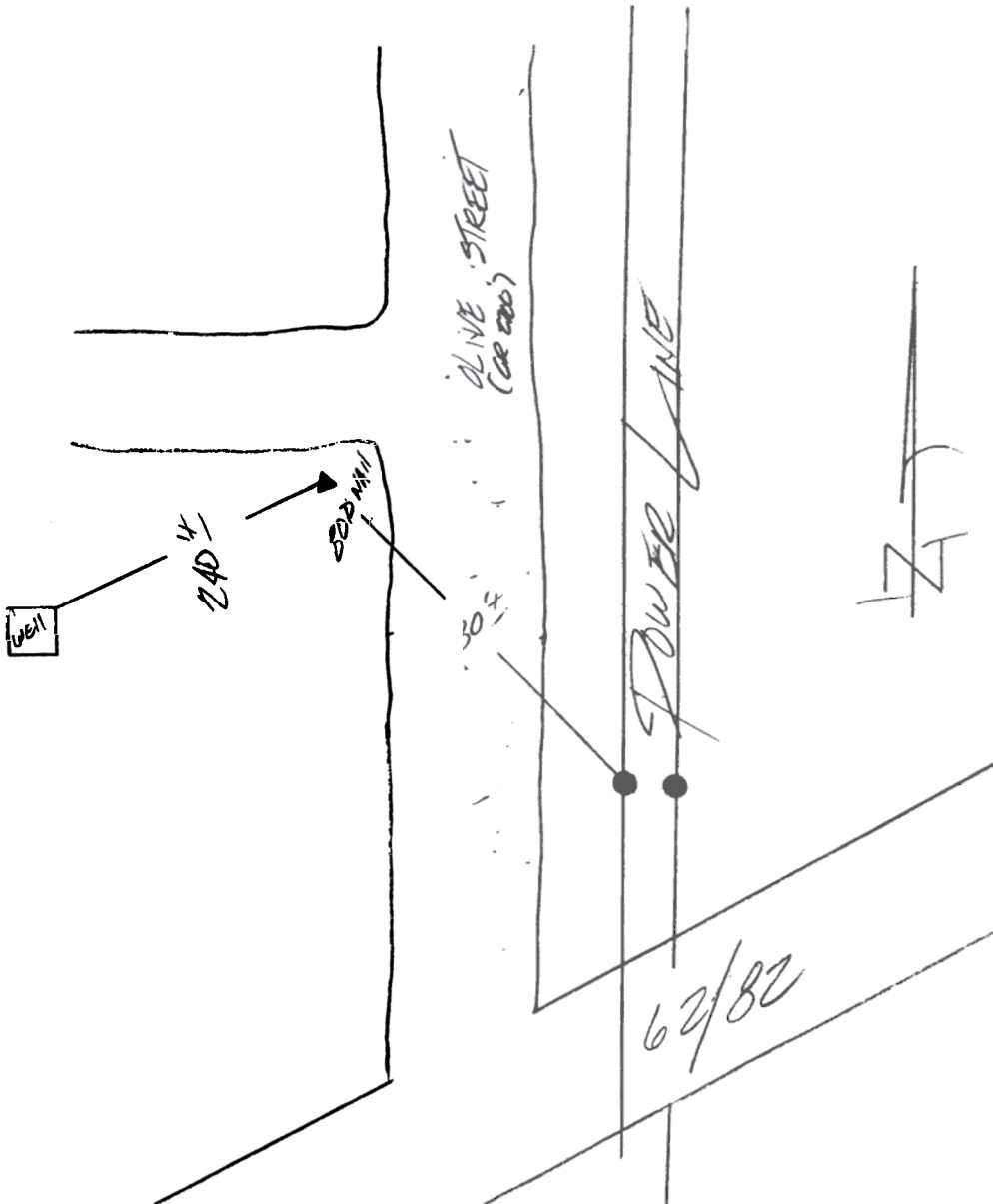
HORIZONTAL DATUM NAD27 VERTICAL DATUM NGVD 29

PT NO	NORTHING	EASTING	ELEVATION	WGS84 LAT	WGS84 LONG	ELLIP HGHT
1485	732482.567	696615.383	3194.82	33°36'25.58161"N	101°46'56.86323"W	3108.58

POINT DESCRIPTION

80d NAIL

*LUBBOCK EAST*  
# 1485



U  
S  
G  
S

P  
O  
I  
N  
T  
Q  
U  
A  
D

N  
U  
M  
B  
E  
R  
M  
A  
P

L  
U  
B  
B  
O  
C  
K  
1  
4  
8  
5

E  
A  
S  
T

**HORIZONTAL & VERTICAL CONTROL FOR  
LUBBOCK, TEXAS  
JANUARY, 2000**

**HORIZONTAL DATUM NAD83 VERTICAL DATUM NAVD 88**

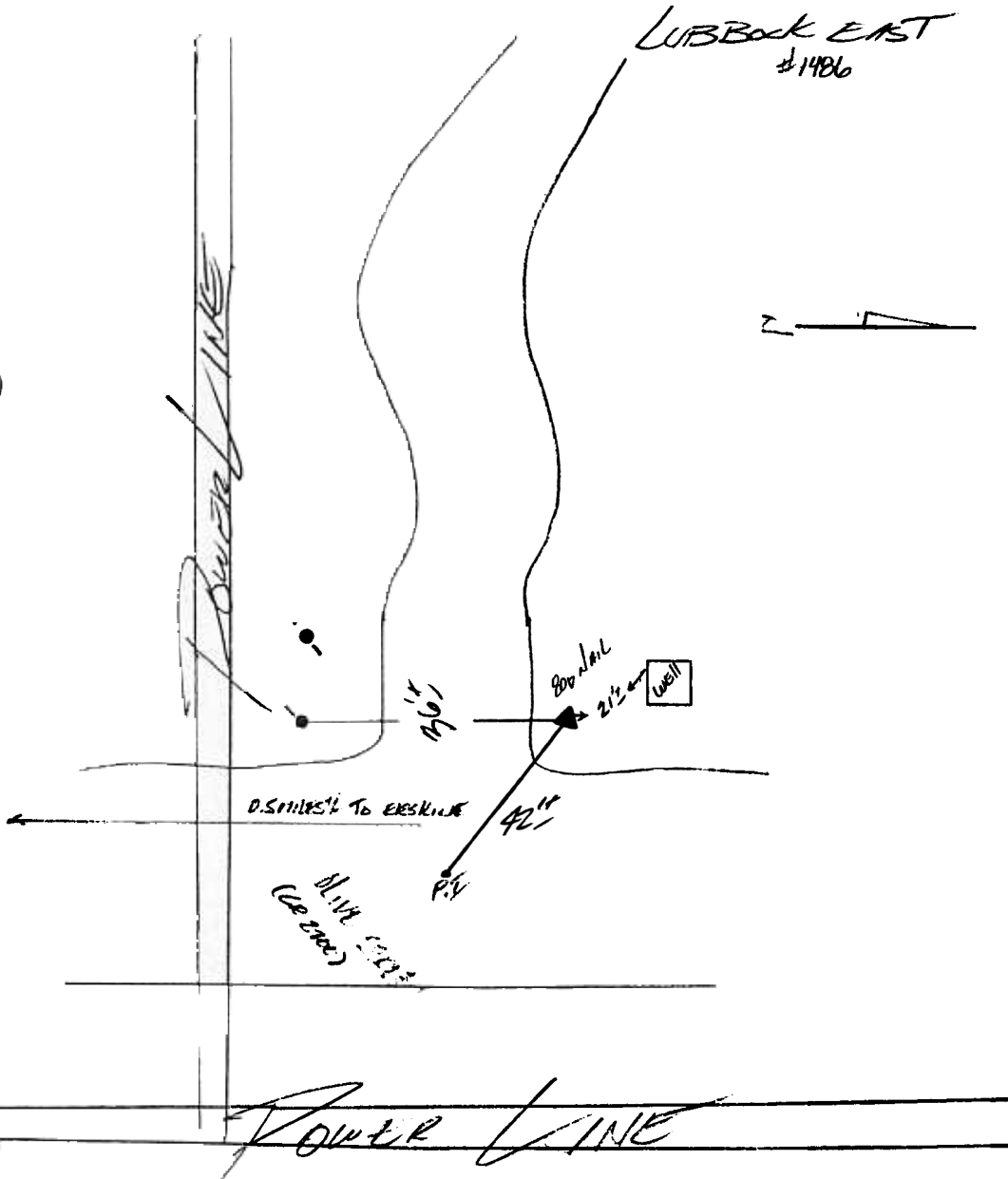
PT NO	NORTHING	EASTING	ELEVATION	WGS84 LAT	WGS84 LONG	ELLIP HGHT
1486	7284940.620	968895.364	3196.19	33°36'42.21955"N	101°47'01.96712"W	3108.63

**HORIZONTAL DATUM NAD27 VERTICAL DATUM NGVD 29**

PT NO	NORTHING	EASTING	ELEVATION	WGS84 LAT	WGS84 LONG	ELLIP HGHT
1486	734180.394	696252.670	3194.92	33°36'42.21955"N	101°47'01.96714"W	3108.65

**POINT DESCRIPTION**

**80d NAIL**



**U  
S  
G  
S**

**P  
O  
I  
N  
T  
Q  
U  
A  
D**

**N  
U  
M  
B  
E  
R  
L  
U  
B  
B  
O  
C  
K**

**1  
4  
8  
6**

**E  
A  
S  
T**

**HORIZONTAL & VERTICAL CONTROL FOR  
LUBBOCK, TEXAS  
JANUARY, 2000**

**HORIZONTAL DATUM NAD83 VERTICAL DATUM NAVD 88**

PT NO	NORTHING	EASTING	ELEVATION	WGS84 LAT	WGS84 LONG	ELLIP HGHT
1488	7287521.209	968950.992	3193.26	33°37'07.75615"N	101°47'02.26325"W	3105.65

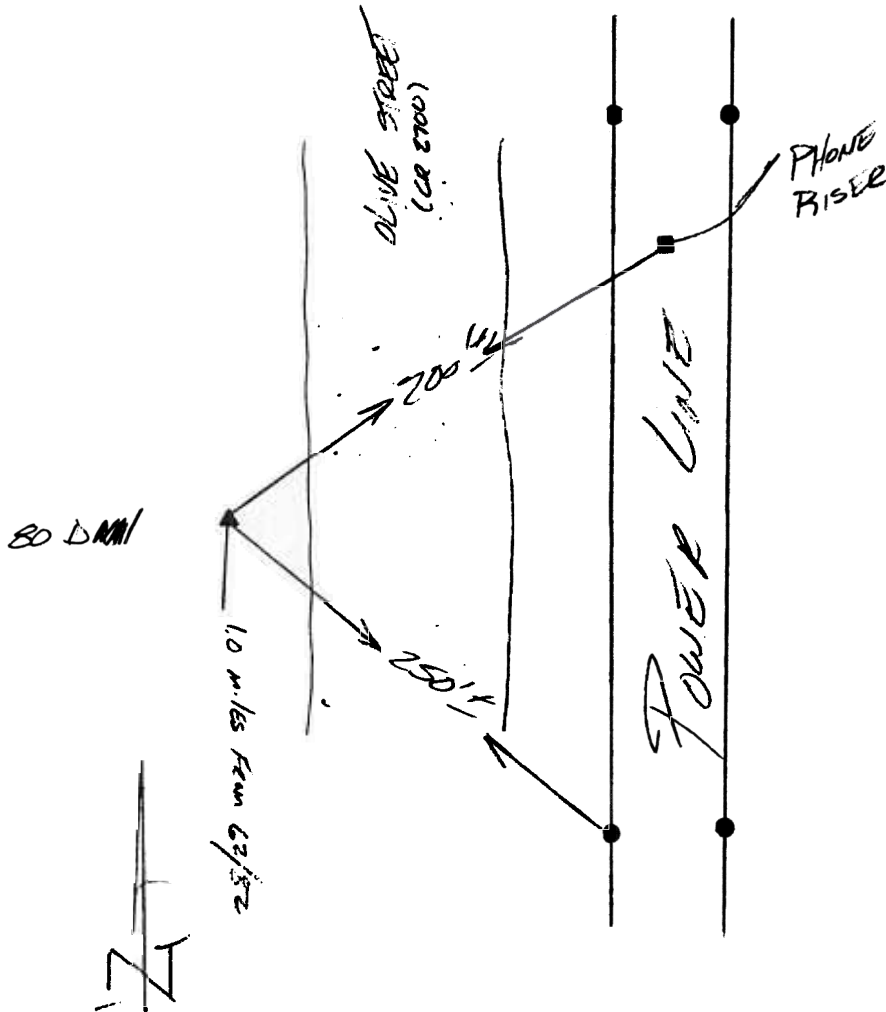
**HORIZONTAL DATUM NAD27 VERTICAL DATUM NGVD 29**

PT NO	NORTHING	EASTING	ELEVATION	WGS84 LAT	WGS84 LONG	ELLIP HGHT
1488	736760.304	696332.900	3191.99	33°37'07.75615"N	101°47'02.26326"W	3105.68

**POINT DESCRIPTION**

**80d NAIL**

*LUBBOCK EAST  
#1488*



**U  
S  
G  
S**

**P  
O  
I  
N  
T  
Q  
U  
A  
D**

**M  
A  
P  
N  
U  
M  
B  
E  
R**

**L  
U  
B  
B  
O  
C  
K  
1  
4  
8  
8**

**E  
A  
S  
T**

**HORIZONTAL & VERTICAL CONTROL FOR  
LUBBOCK, TEXAS  
JANUARY, 2000**

**HORIZONTAL DATUM NAD83 VERTICAL DATUM NAVD 88**

PT NO	NORTHING	EASTING	ELEVATION	WGS84 LAT	WGS84 LONG	ELLIP HGHT
1501	7246182.803	973544.424	3146.27	33°30'20.36915"N	101°45'52.78151"W	3059.27

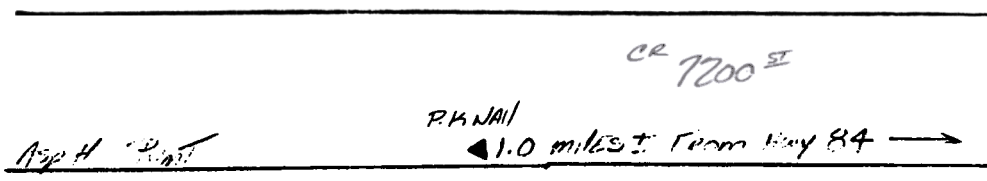
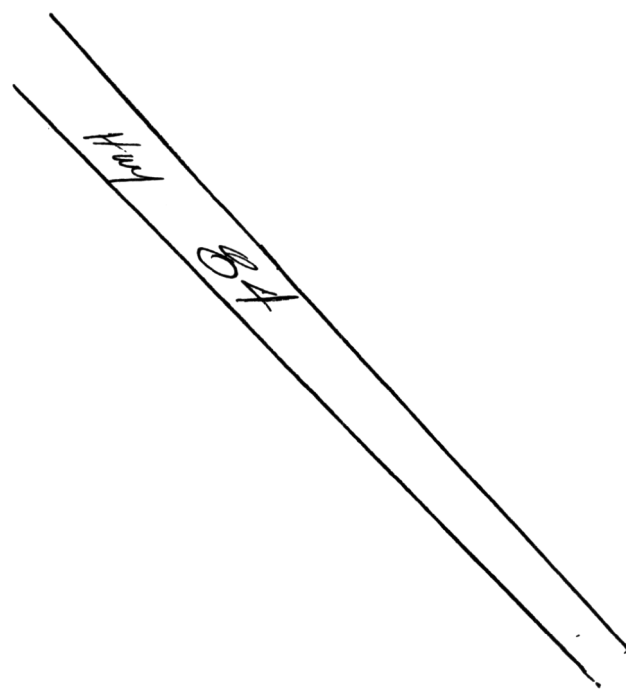
**HORIZONTAL DATUM NAD27 VERTICAL DATUM NGVD 29**

PT NO	NORTHING	EASTING	ELEVATION	WGS84 LAT	WGS84 LONG	ELLIP HGHT
1501	695380.474	700531.929	3145.01	33°30'20.36924"N	101°45'52.78158"W	3059.23

**POINT DESCRIPTION**

**PK NAIL**

*LUBBOCK EAST  
#1501*



**U  
S  
G  
S**

**P  
O  
I  
N  
T  
Q  
U  
A  
D**

**M  
A  
P  
N  
U  
M  
B  
E  
R**

**L  
U  
B  
B  
O  
C  
K**

**1  
5  
0  
1**

**E  
A  
S  
T**

**HORIZONTAL & VERTICAL CONTROL FOR  
LUBBOCK, TEXAS  
JANUARY, 2000**

**HORIZONTAL DATUM NAD83 VERTICAL DATUM NAVD 88**

PT NO	NORTHING	EASTING	ELEVATION	WGS84 LAT	WGS84 LONG	ELLIP HGHT
1500	7248695.646	973774.642	3146.52	33°30'45.29036"N	101°45'50.98568"W	3059.47

**HORIZONTAL DATUM NAD27 VERTICAL DATUM NGVD 29**

PT NO	NORTHING	EASTING	ELEVATION	WGS84 LAT	WGS84 LONG	ELLIP HGHT
1500	697890.978	700786.093	3145.26	33°30'45.29044"N	101°45'50.98573"W	3059.44

**POINT DESCRIPTION**

**PK NAIL**

*LUBBOCK EAST  
#1500*

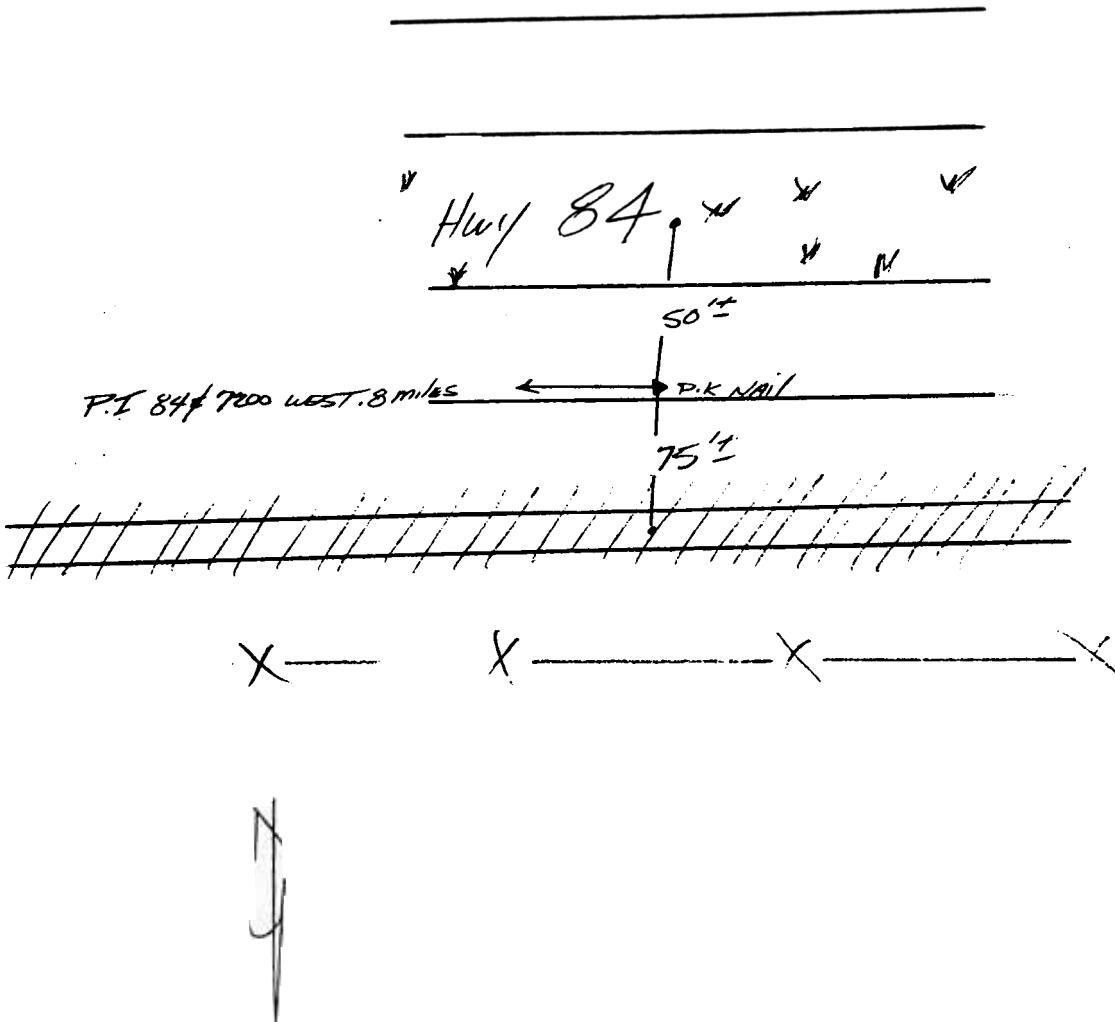
**U  
S  
G  
S**

**P  
O  
I  
N  
T  
Q  
U  
A  
D**

**M  
A  
P  
N  
U  
M  
B  
E  
R**

**L  
U  
B  
B  
O  
C  
K  
1  
5  
0  
0**

**E  
A  
S  
T**



PT NO	NORTHING	EASTING	ELEVATION	WGS84 LAT	WGS84 LONG	ELLIP HGHT
1499	7251386.234	974706.415	3148.01	33°31'12.18479"N	101°45'40.97165"W	3060.91

**HORIZONTAL DATUM NAD27 VERTICAL DATUM NGVD 29**

PT NO	NORTHING	EASTING	ELEVATION	WGS84 LAT	WGS84 LONG	ELLIP HGHT
1499	700572.528	701743.466	3146.75	33°31'12.18487"N	101°45'40.97170"W	3060.88

**POINT DESCRIPTION**

**PK NAIL**

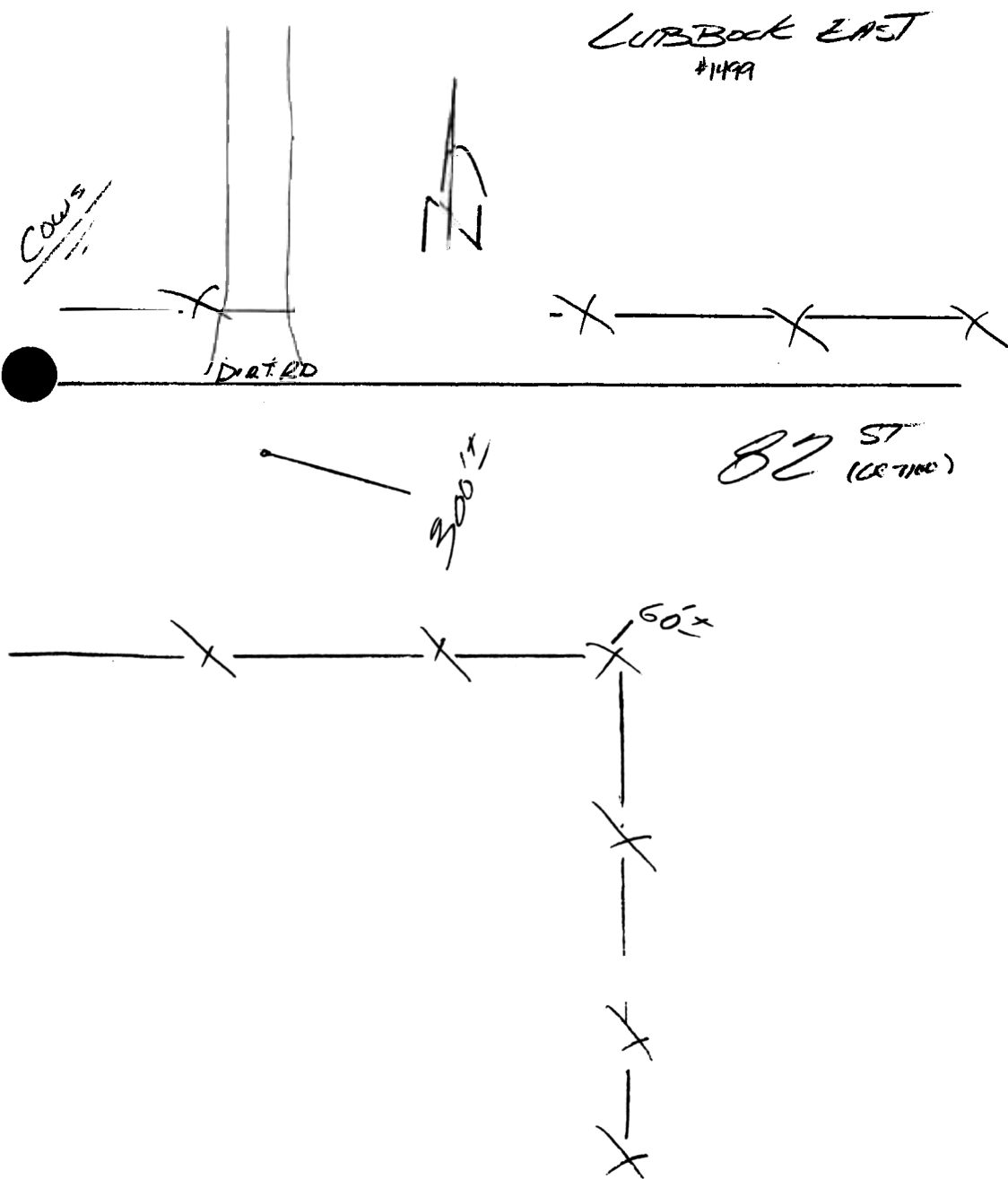
**U  
S  
G  
S**

**Q  
U  
A  
D  
P  
O  
I  
N  
T**

**M  
A  
P  
N  
U  
M  
B  
E  
R**

**L  
U  
B  
B  
O  
C  
K**

**E  
A  
S  
T**



1  
4  
9  
9



# HORIZONTAL & VERTICAL CONTROL FOR LUBBOCK, TEXAS JANUARY, 2000

**HORIZONTAL DATUM NAD83 VERTICAL DATUM NAVD 88**

PT NO	NORTHING	EASTING	ELEVATION	WGS84 LAT	WGS84 LONG	ELLIP HGHT
1496	7261951.178	973410.415	3164.48	33°32'56.26641"N	101°46'00.15271"W	3077.23

**HORIZONTAL DATUM NAD27 VERTICAL DATUM NGVD 29**

PT NO	NORTHING	EASTING	ELEVATION	WGS84 LAT	WGS84 LONG	ELLIP HGHT
1496	711149.223	700548.271	3163.21	33°32'56.26647"N	101°46'00.15275"W	3077.21

**POINT DESCRIPTION**

**PK NAIL**

*LUBBOCK EAST  
#1496*

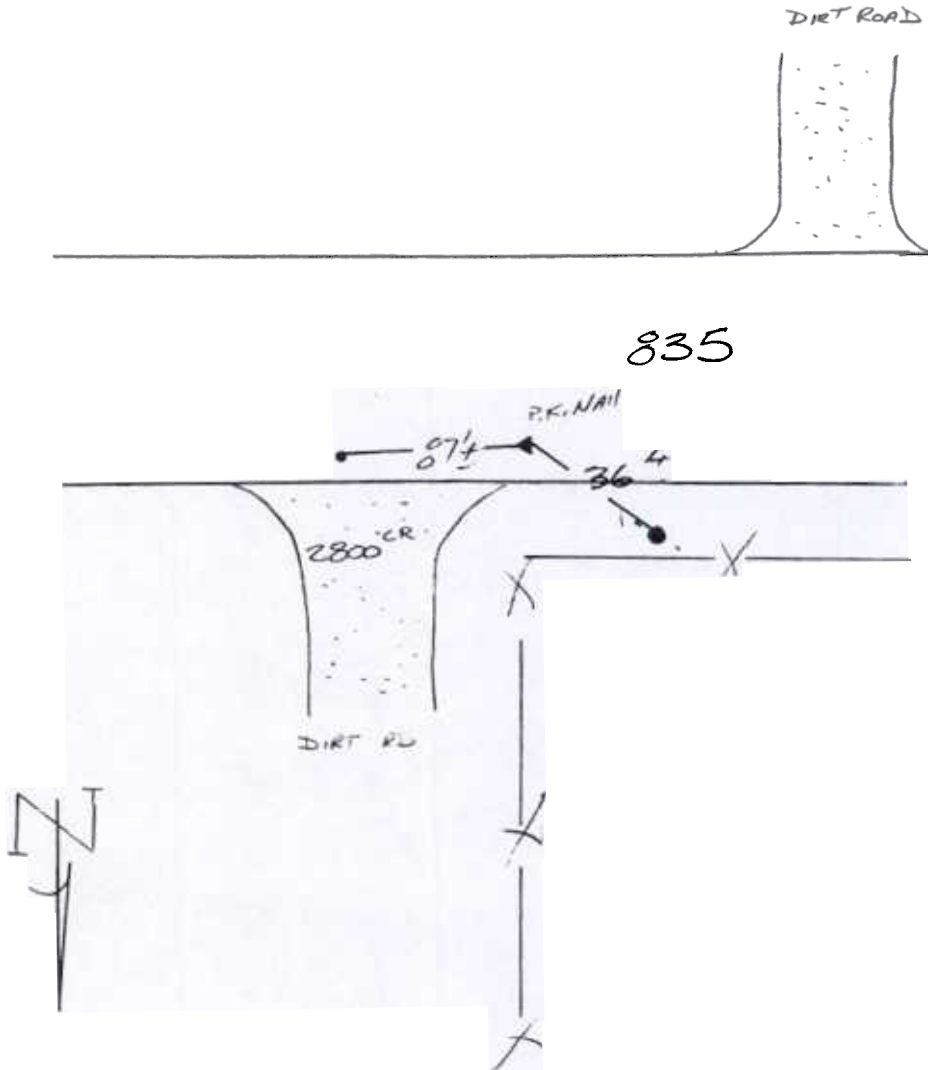
U  
S  
G  
S

P  
O  
I  
N  
T  
  
Q  
U  
A  
D

M  
A  
P  
  
L  
U  
B  
B  
O  
C  
K

1  
4  
9  
6

E  
A  
S  
T



# HORIZONTAL & VERTICAL CONTROL FOR LUBBOCK, TEXAS JANUARY, 2000

**HORIZONTAL DATUM NAD83 VERTICAL DATUM NAVD 88**

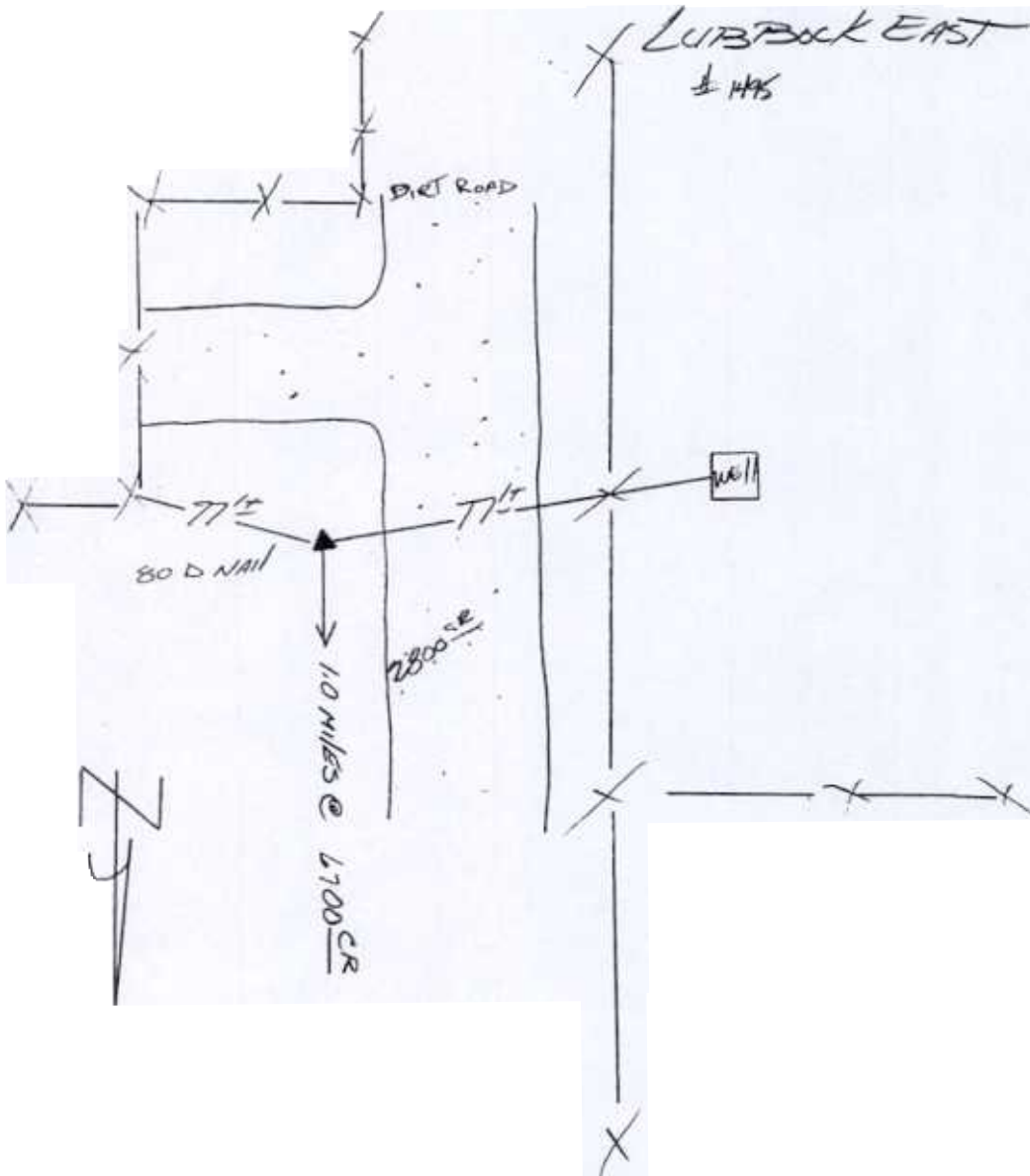
PT NO	NORTHING	EASTING	ELEVATION	WGS84 LAT	WGS84 LONG	ELLIP HGHT
1495	7267160.119	973680.582	3172.59	33°33'47.86190"N	101°45'58.87501"W	3085.25

**HORIZONTAL DATUM NAD27 VERTICAL DATUM NGVD 29**

PT NO	NORTHING	EASTING	ELEVATION	WGS84 LAT	WGS84 LONG	ELLIP HGHT
1495	716355.289	700868.086	3171.32	33°33'47.86195"N	101°45'58.87506"W	3085.24

**POINT DESCRIPTION**

**80d NAIL**



**U  
S  
G  
S  
  
Q  
U  
A  
D  
  
M  
A  
P  
  
L  
U  
B  
B  
O  
C  
K  
  
E  
A  
S  
T**

**P  
O  
I  
N  
T  
  
N  
U  
M  
B  
E  
R  
  
1  
4  
9  
5**

**HORIZONTAL & VERTICAL CONTROL FOR  
LUBBOCK, TEXAS  
JANUARY, 2000**

**HORIZONTAL DATUM NAD83 VERTICAL DATUM NAVD 88**

PT NO	NORTHING	EASTING	ELEVATION	WGS84 LAT	WGS84 LONG	ELLIP HGHT
1494	7269832.227	973753.510	3189.45	33°34'14.30932"N	101°45'58.99513"W	3102.07

**HORIZONTAL DATUM NAD27 VERTICAL DATUM NGVD 29**

PT NO	NORTHING	EASTING	ELEVATION	WGS84 LAT	WGS84 LONG	ELLIP HGHT
1494	719026.548	700966.488	3188.19	33°34'14.30936"N	101°45'58.99517"W	3102.07

**POINT DESCRIPTION**

**80d NAIL**

*LUBBOCK EAST  
# 1494*

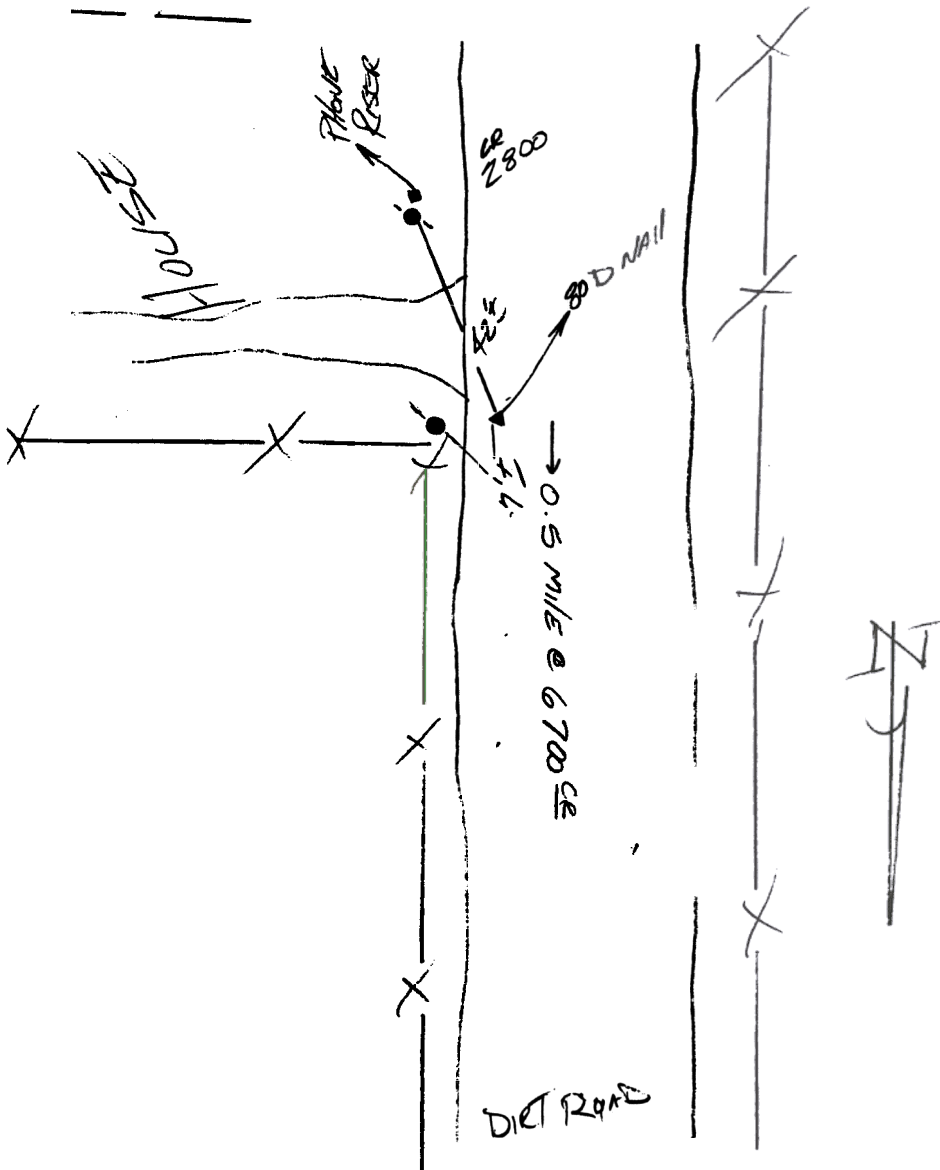
**U  
S  
G  
S**

**P  
O  
I  
N  
T  
Q  
U  
A  
D**

**N  
U  
M  
B  
E  
R**

**L  
U  
B  
B  
O  
C  
K**

**1  
4  
9  
4  
E  
A  
S  
T**



# HORIZONTAL & VERTICAL CONTROL FOR LUBBOCK, TEXAS JANUARY, 2000

**HORIZONTAL DATUM NAD83 VERTICAL DATUM NAVD 88**

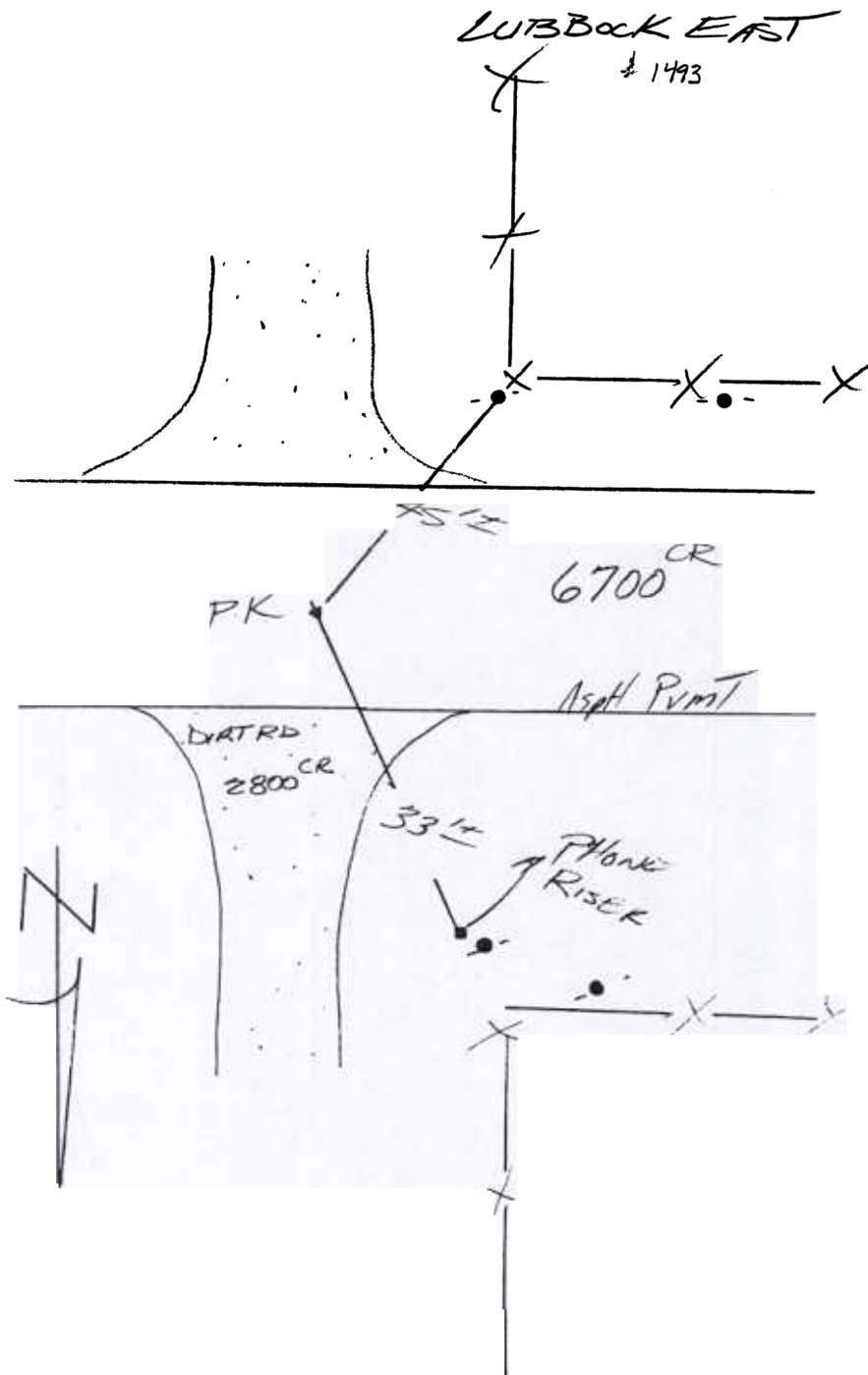
PT NO	NORTHING	EASTING	ELEVATION	WGS84 LAT	WGS84 LONG	ELLIP HGHT
1493	7272565.788	973876.520	3188.10	33°34'41.37980"N	101°45'58.54616"W	3100.67

**HORIZONTAL DATUM NAD27 VERTICAL DATUM NGVD 29**

PT NO	NORTHING	EASTING	ELEVATION	WGS84 LAT	WGS84 LONG	ELLIP HGHT
1493	721758.779	701115.553	3186.83	33°34'41.37983"N	101°45'58.54620"W	3100.67

**POINT DESCRIPTION**

**PK NAIL**



**U  
S  
G  
S**

**Q  
U  
A  
D**

**M  
A  
P  
N  
U  
M  
B  
E  
R**

**L  
U  
B  
B  
O  
C  
K**

**1  
4  
9  
3  
E  
A  
S  
T**

# HORIZONTAL & VERTICAL CONTROL FOR LUBBOCK, TEXAS JANUARY, 2000

**HORIZONTAL DATUM NAD83 VERTICAL DATUM NAVD 88**

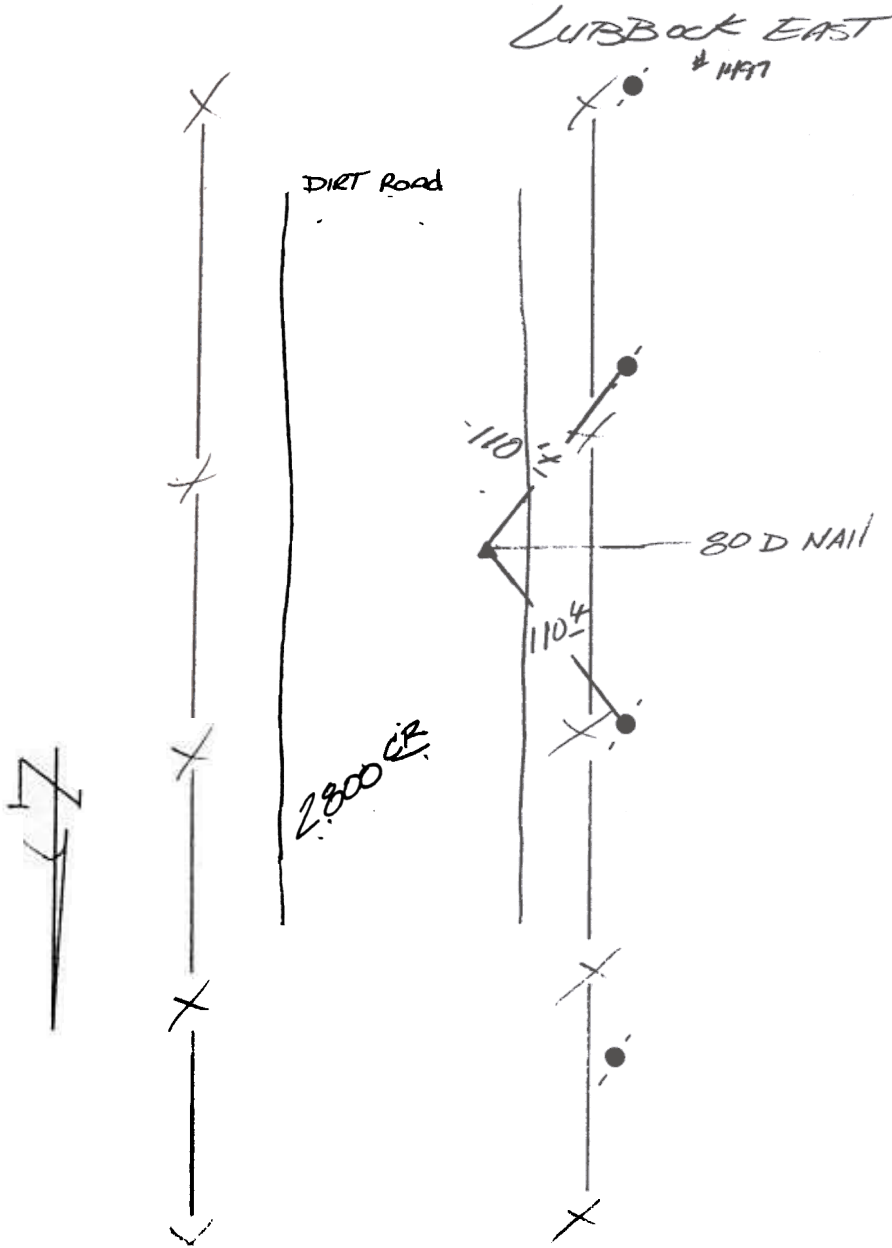
PT NO	NORTHING	EASTING	ELEVATION	WGS84 LAT	WGS84 LONG	ELLIP HGHT
1497	7264430.830	973565.871	3163.41	33°33'20.83609"N	101°45'59.22743"W	3076.12

**HORIZONTAL DATUM NAD27 VERTICAL DATUM NGVD 29**

PT NO	NORTHING	EASTING	ELEVATION	WGS84 LAT	WGS84 LONG	ELLIP HGHT
1497	713627.250	700727.360	3162.15	33°33'20.83614"N	101°45'59.22748"W	3076.11

**POINT DESCRIPTION**

**80d NAIL**



**U  
S  
G  
S**

**P  
O  
I  
N  
T  
Q  
U  
A  
D**

**M  
A  
P  
N  
U  
M  
B  
E  
R**

**L  
U  
B  
B  
O  
C  
K**

**1  
4  
9  
7  
E  
A  
S  
T**

**HORIZONTAL & VERTICAL CONTROL FOR  
LUBBOCK, TEXAS  
JANUARY, 2000**

**HORIZONTAL DATUM NAD83 VERTICAL DATUM NAVD 88**

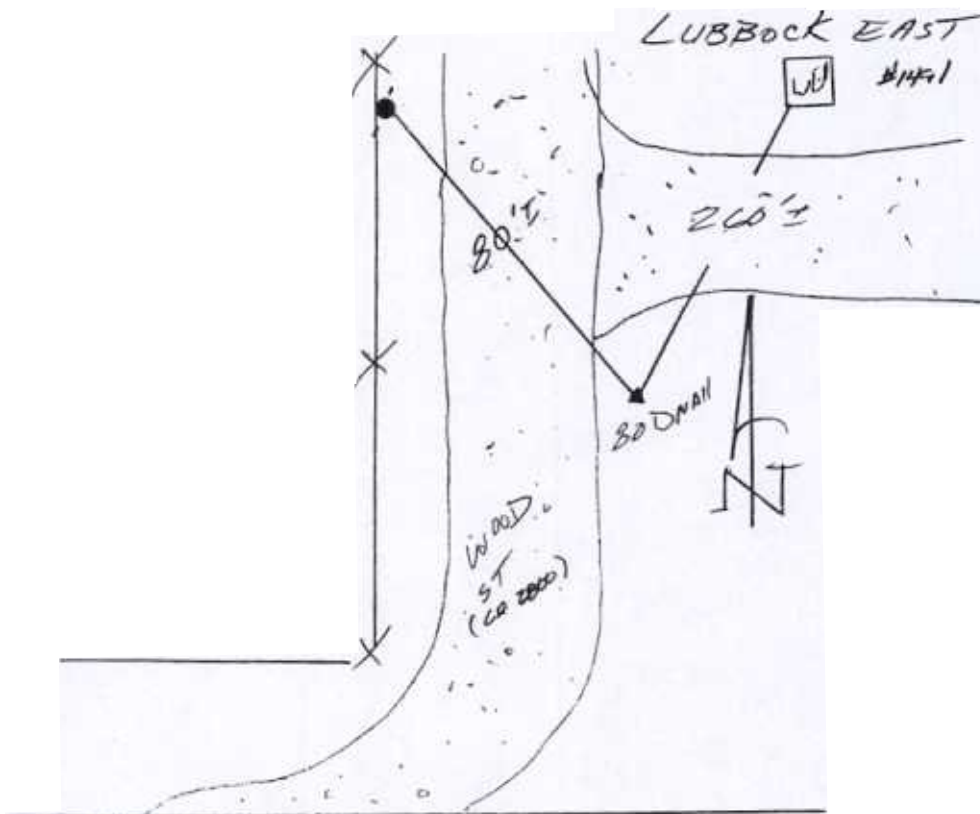
PT NO	NORTHING	EASTING	ELEVATION	WGS84 LAT	WGS84 LONG	ELLIP HGHT
1491	7277882.649	974045.902	3176.68	33°35'34.01104"N	101°45'58.49836"W	3089.16

**HORIZONTAL DATUM NAD27 VERTICAL DATUM NGVD 29**

PT NO	NORTHING	EASTING	ELEVATION	WGS84 LAT	WGS84 LONG	ELLIP HGHT
1491	727073.720	701335.619	3175.41	33°35'34.01105"N	101°45'58.49840"W	3089.17

**POINT DESCRIPTION**

**80d NAIL**



*CR 6600*

*12pt Pmt*

**U  
S  
G  
S**  
  
**Q  
U  
A  
D**  
  
**M  
A  
P**  
  
**L  
U  
B  
B  
O  
C  
K**  
  
**E  
A  
S  
T**

**P  
O  
I  
N  
T**  
  
**N  
U  
M  
B  
E  
R**  
  
**1  
4  
9  
1**



# HORIZONTAL & VERTICAL CONTROL FOR LUBBOCK, TEXAS JANUARY, 2000

**HORIZONTAL DATUM NAD83 VERTICAL DATUM NAVD 88**

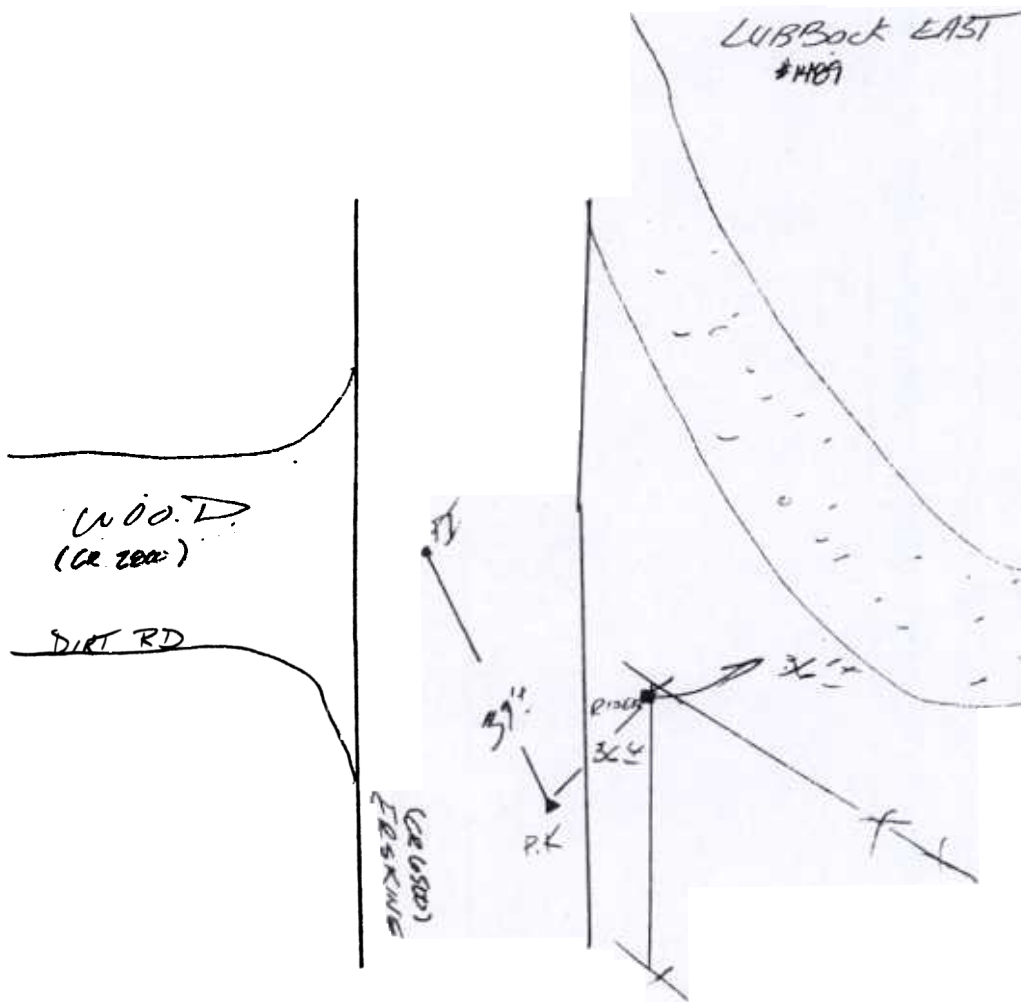
PT NO	NORTHING	EASTING	ELEVATION	WGS84 LAT	WGS84 LONG	ELLIP HGHT
1489	7283135.220	974140.452	3187.66	33°36'25.98325"N	101°45'59.31132"W	3100.05

**HORIZONTAL DATUM NAD27 VERTICAL DATUM NGVD 29**

PT NO	NORTHING	EASTING	ELEVATION	WGS84 LAT	WGS84 LONG	ELLIP HGHT
1489	732325.089	701480.244	3186.39	33°36'25.98326"N	101°45'59.31136"W	3100.07

**POINT DESCRIPTION**

**PK NAIL**



**U  
S  
G  
S**  
  
**Q  
U  
A  
D**  
  
**M  
A  
P**  
  
**L  
U  
B  
B  
O  
C  
K**  
  
**E  
A  
S  
T**  
  
**P  
O  
I  
N  
T**  
  
**N  
U  
M  
B  
E  
R**  
  
**1  
4  
8  
9**