

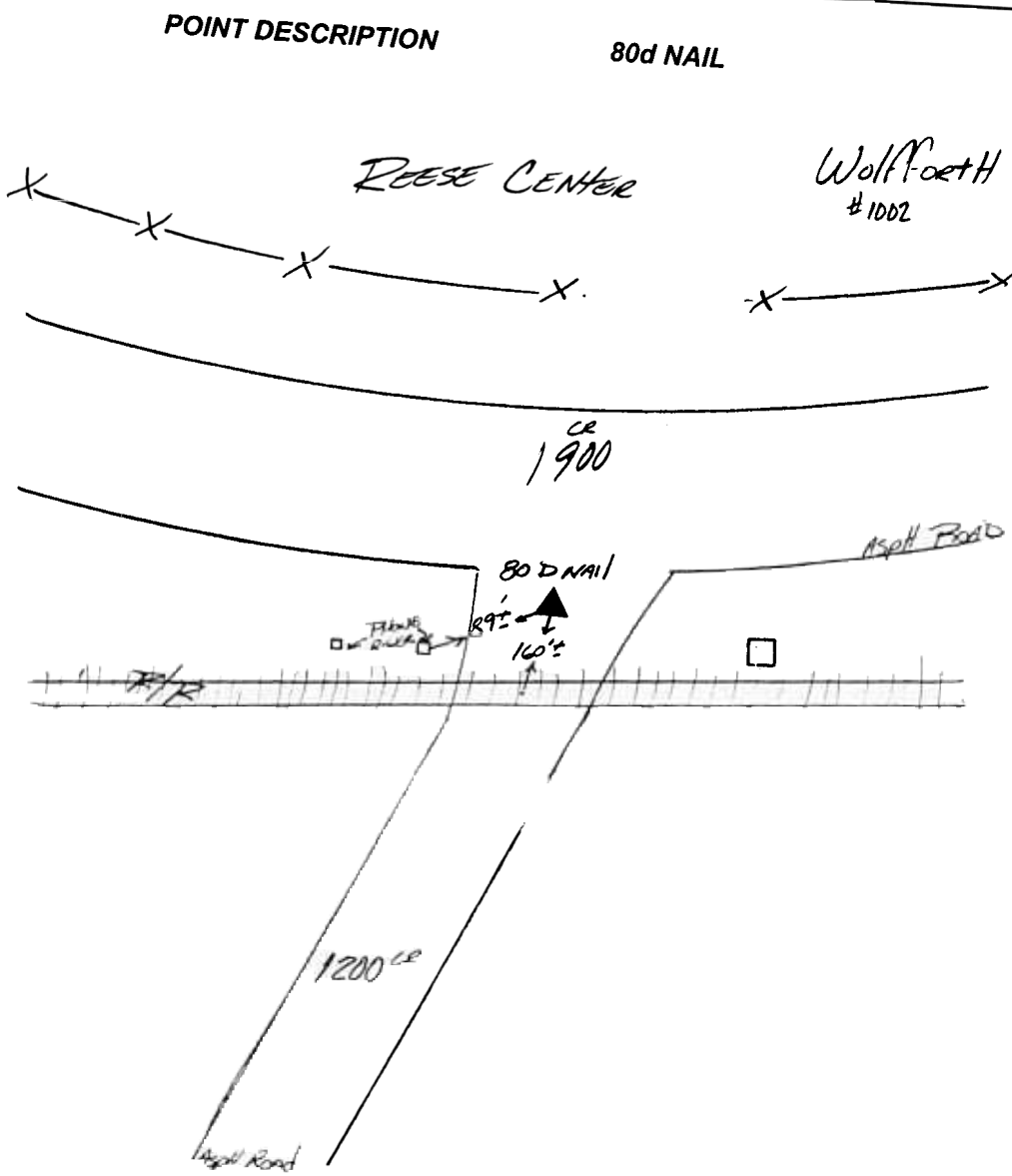
HORIZONTAL & VERTICAL CONTROL FOR LUBBOCK, TEXAS JANUARY, 2000

HORIZONTAL DATUM NAD83 VERTICAL DATUM NAVD 88

| PT NO | NORTHING | EASTING | ELEVATION | WGS84 LAT | WGS84 LONG | ELLIP HGHT |
|-------|-------------|------------|-----------|------------------|-------------------|------------|
| 1002 | 7275145.841 | 889998.963 | 3321.38 | 33°34'40.01143"N | 102°02'30.46956"W | 3235.56 |

HORIZONTAL DATUM NAD27 VERTICAL DATUM NGVD 29

| PT NO | NORTHING | EASTING | ELEVATION | WGS84 LAT | WGS84 LONG | ELLIP HGHT |
|-------|------------|------------|-----------|------------------|-------------------|------------|
| 1002 | 725138.403 | 617267.390 | 3320.12 | 33°34'40.01143"N | 102°02'30.46956"W | 3235.56 |



U
S
G
S

P
O
I
N
T

Q
U
A
D

M
A
P

N
U
M
B
E
R

W
O
L
F
F
O
R
T
H

1
0
0
2

**HORIZONTAL & VERTICAL CONTROL FOR
LUBBOCK, TEXAS
JANUARY, 2000**

HORIZONTAL DATUM NAD83 VERTICAL DATUM NAVD 88

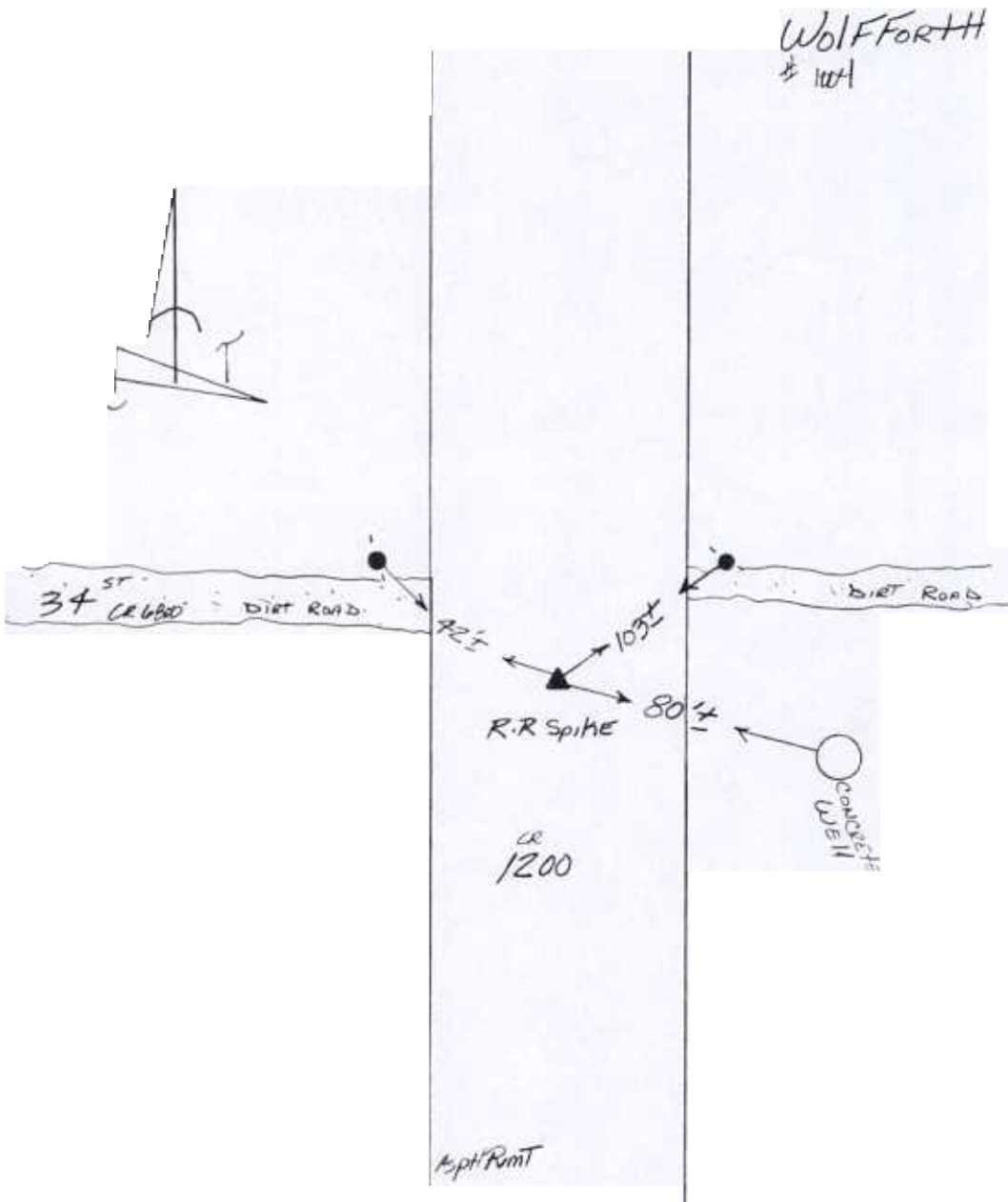
| PT NO | NORTHING | EASTING | ELEVATION | WGS84 LAT | WGS84 LONG | ELLIP HGHT |
|-------|-------------|------------|-----------|------------------|-------------------|------------|
| 1004 | 7269860.256 | 889225.805 | 3320.96 | 33°33'47.48790"N | 102°02'37.49644"W | 3235.25 |

HORIZONTAL DATUM NAD27 VERTICAL DATUM NGVD 29

| PT NO | NORTHING | EASTING | ELEVATION | WGS84 LAT | WGS84 LONG | ELLIP HGHT |
|-------|------------|------------|-----------|------------------|-------------------|------------|
| 1004 | 719860.492 | 616443.882 | 3319.71 | 33°33'47.48790"N | 102°02'37.49644"W | 3235.25 |

POINT DESCRIPTION

RR SPIKE FND



**U
S
G
S**

**Q
U
A
D**

**M
A
P
N
U
M
B
E
R**

**W
O
L
F
F
O
R
T
H**

**1
0
0
4**

HORIZONTAL & VERTICAL CONTROL FOR LUBBOCK, TEXAS JANUARY, 2000

HORIZONTAL DATUM NAD83 VERTICAL DATUM NAVD 88

| PT NO | NORTHING | EASTING | ELEVATION | WGS84 LAT | WGS84 LONG | ELLIP HGHT |
|-------|-------------|------------|-----------|------------------|-------------------|------------|
| 1006 | 7267027.359 | 889134.286 | 3316.88 | 33°33'19.44463"N | 102°02'37.44842"W | 3231.22 |

HORIZONTAL DATUM NAD27 VERTICAL DATUM NGVD 29

| PT NO | NORTHING | EASTING | ELEVATION | WGS84 LAT | WGS84 LONG | ELLIP HGHT |
|-------|------------|------------|-----------|------------------|-------------------|------------|
| 1006 | 717028.629 | 616325.358 | 3315.64 | 33°33'19.44463"N | 102°02'37.44842"W | 3231.22 |

POINT DESCRIPTION

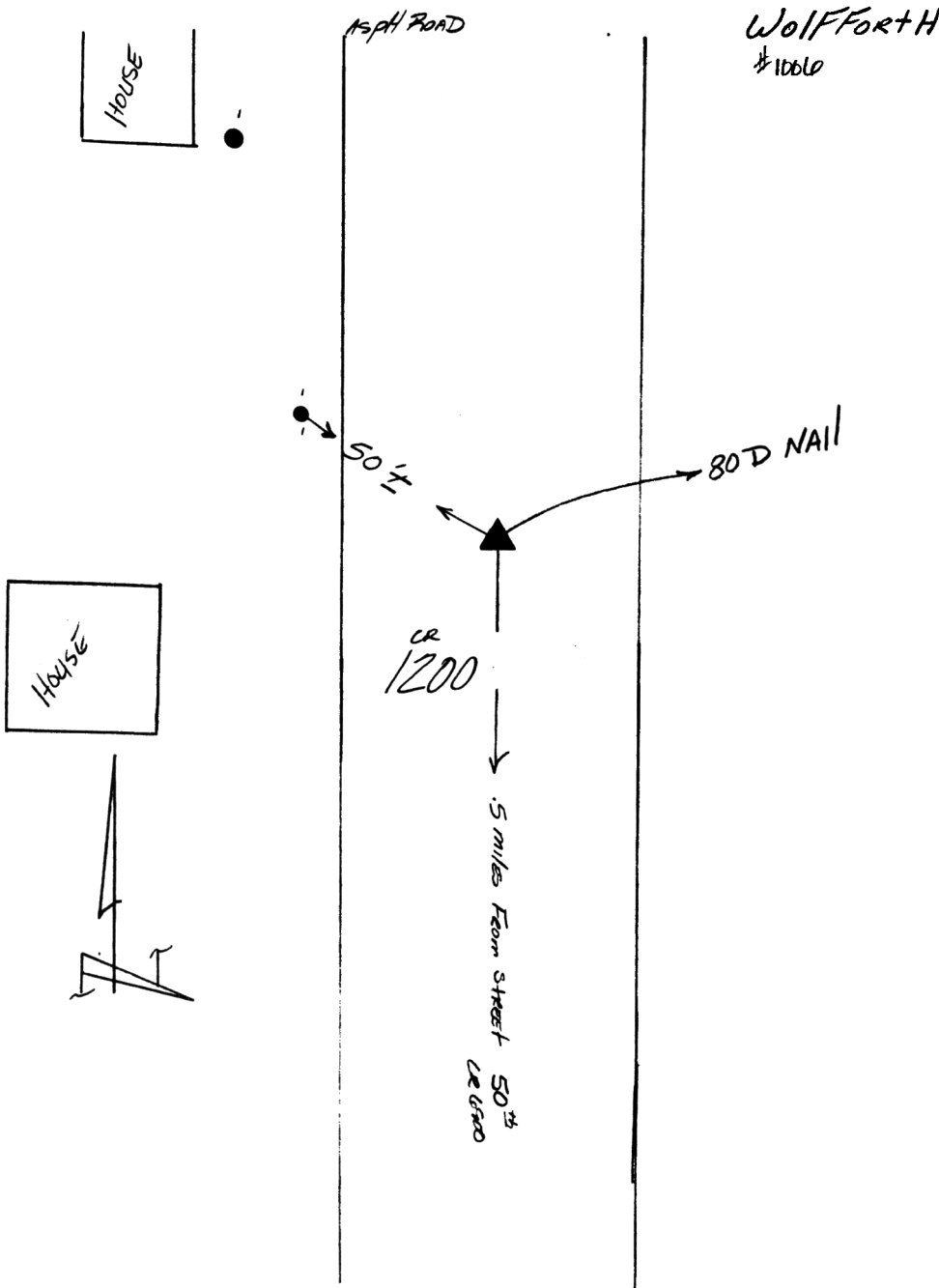
80d NAIL

U
S
G
S

P
O
I
N
T
Q
U
A
D

M
A
P
N
U
M
B
E
R

W
O
L
F
F
O
R
T
H
1
0
0
6



HORIZONTAL & VERTICAL CONTROL FOR LUBBOCK, TEXAS JANUARY, 2000

HORIZONTAL DATUM NAD83 VERTICAL DATUM NAVD 88

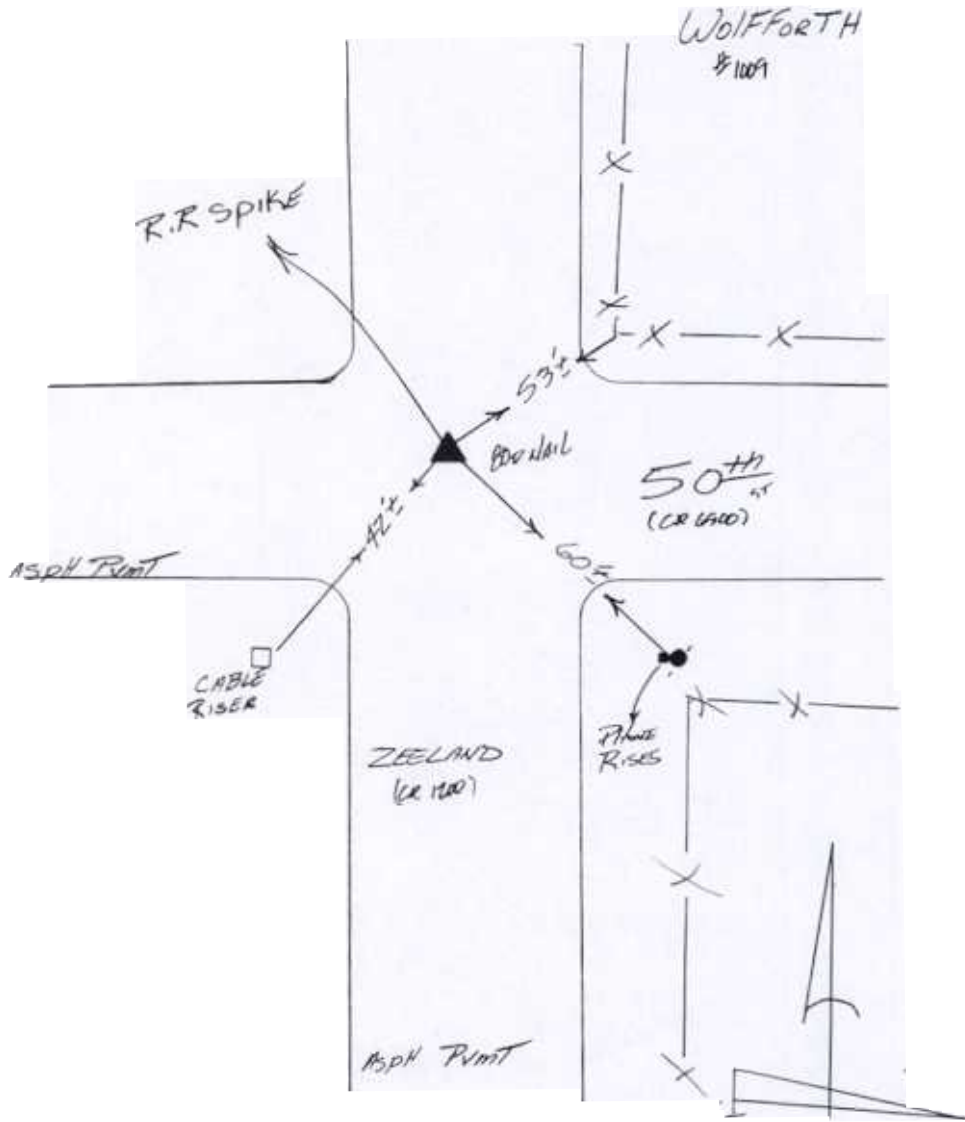
| PT NO | NORTHING | EASTING | ELEVATION | WGS84 LAT | WGS84 LONG | ELLIP HGHT |
|-------|-------------|------------|-----------|------------------|-------------------|------------|
| 1009 | 7264584.091 | 889055.411 | 3321.34 | 33°32'55.25832"N | 102°02'37.40635"W | 3235.72 |

HORIZONTAL DATUM NAD27 VERTICAL DATUM NGVD 29

| PT NO | NORTHING | EASTING | ELEVATION | WGS84 LAT | WGS84 LONG | ELLIP HGHT |
|-------|------------|------------|-----------|------------------|-------------------|------------|
| 1009 | 714586.253 | 616223.193 | 3320.10 | 33°32'55.25832"N | 102°02'37.40635"W | 3235.72 |

POINT DESCRIPTION

80d NAIL



**U
S
S

Q
U
A
D

M
A
P

W
O
L
F
F
O
R
T
H**

**P
O
I
N
T

N
U
M
B
E
R

1
0
0
9**

HORIZONTAL & VERTICAL CONTROL FOR LUBBOCK, TEXAS JANUARY, 2000

HORIZONTAL DATUM NAD83 VERTICAL DATUM NAVD 88

| PT NO | NORTHING | EASTING | ELEVATION | WGS84 LAT | WGS84 LONG | ELLIP HGHT |
|-------|-------------|------------|-----------|------------------|-------------------|------------|
| 1010 | 7261892.509 | 888968.766 | 3299.87 | 33°32'28.61394"N | 102°02'37.35711"W | 3214.29 |

HORIZONTAL DATUM NAD27 VERTICAL DATUM NGVD 29

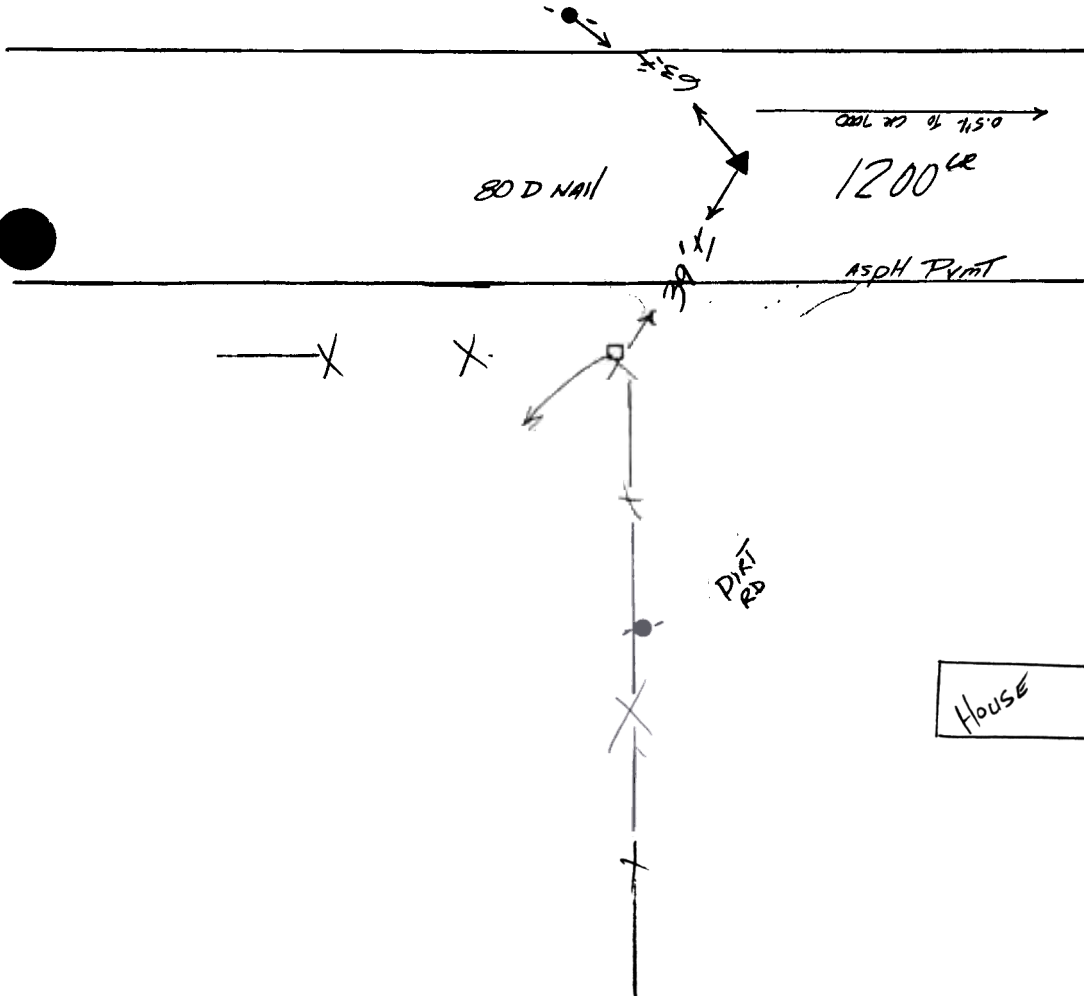
| PT NO | NORTHING | EASTING | ELEVATION | WGS84 LAT | WGS84 LONG | ELLIP HGHT |
|-------|------------|------------|-----------|------------------|-------------------|------------|
| 1010 | 711895.651 | 616110.889 | 3298.64 | 33°32'28.61394"N | 102°02'37.35711"W | 3214.29 |

POINT DESCRIPTION

80d NAIL



*WolfForth
1010*



U
S
G
S

 Q
U
A
D

 M
A
P

 W
O
L
F
F
O
R
T
H

 P
O
I
N
T

 N
U
M
B
E
R

 1
0
1
0

HORIZONTAL & VERTICAL CONTROL FOR LUBBOCK, TEXAS JANUARY, 2000

HORIZONTAL DATUM NAD83 VERTICAL DATUM NAVD 88

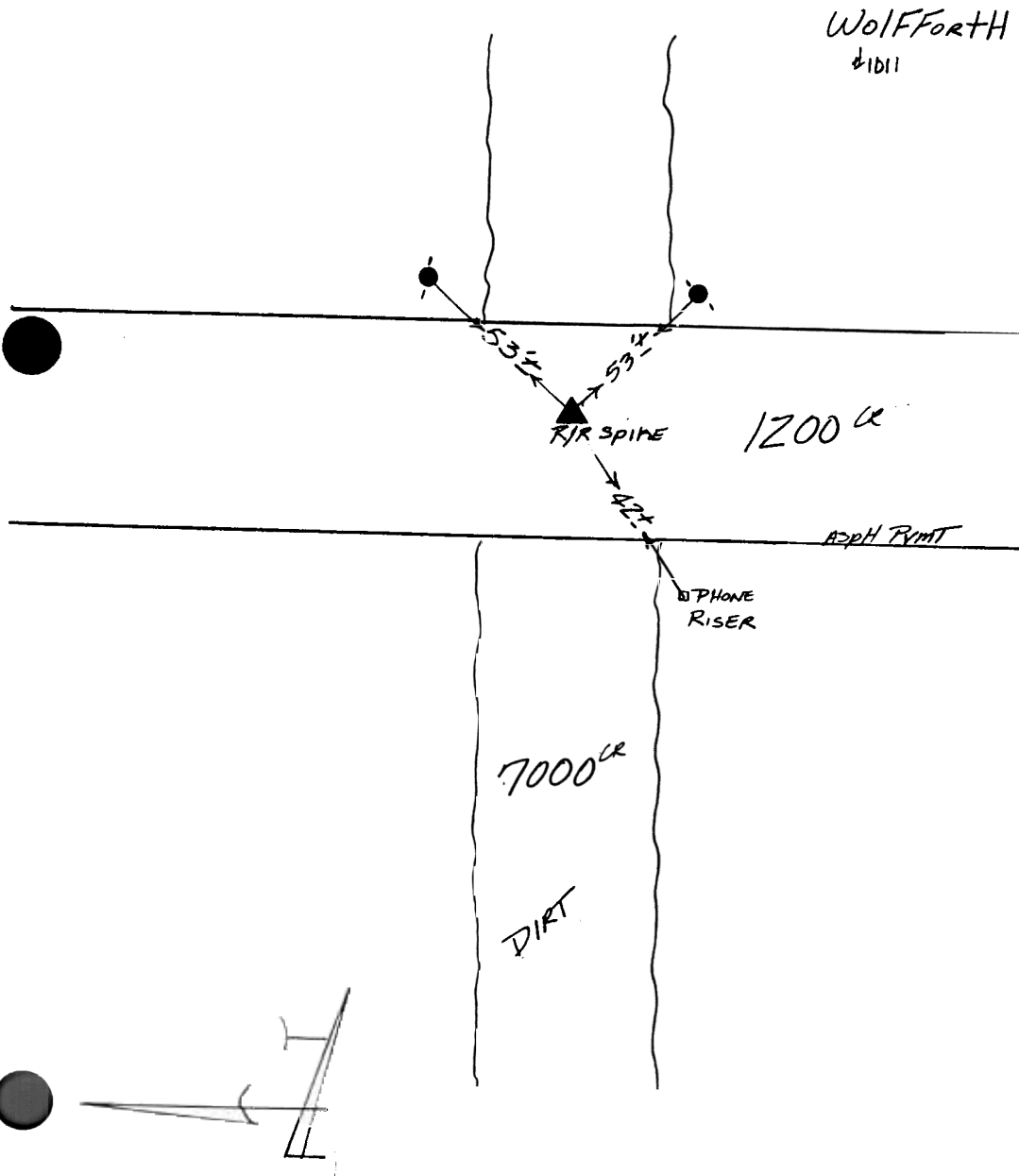
| PT NO | NORTHING | EASTING | ELEVATION | WGS84 LAT | WGS84 LONG | ELLIP HGHT |
|-------|-------------|------------|-----------|------------------|-------------------|------------|
| 1011 | 7259302.383 | 888885.887 | 3320.80 | 33°32'02.97400"N | 102°02'37.30381"W | 3235.27 |

HORIZONTAL DATUM NAD27 VERTICAL DATUM NGVD 29

| PT NO | NORTHING | EASTING | ELEVATION | WGS84 LAT | WGS84 LONG | ELLIP HGHT |
|-------|------------|------------|-----------|------------------|-------------------|------------|
| 1011 | 709306.464 | 616003.320 | 3319.58 | 33°32'02.97400"N | 102°02'37.30381"W | 3235.27 |

POINT DESCRIPTION

RR SPIKE FND



U
S
G
S

Q
U
A
D

M
A
P

W
O
L
F
F
O
R
T
H

P
O
I
N
T

N
U
M
B
E
R

1
0
1
1

**HORIZONTAL & VERTICAL CONTROL FOR
LUBBOCK, TEXAS
JANUARY, 2000**

HORIZONTAL DATUM NAD83 VERTICAL DATUM NAVD 88

| PT NO | NORTHING | EASTING | ELEVATION | WGS84 LAT | WGS84 LONG | ELLIP HGHT |
|-------|-------------|------------|-----------|------------------|-------------------|------------|
| 1013 | 7256612.201 | 888800.703 | 3325.49 | 33°31'36.34382"N | 102°02'37.23787"W | 3240.00 |

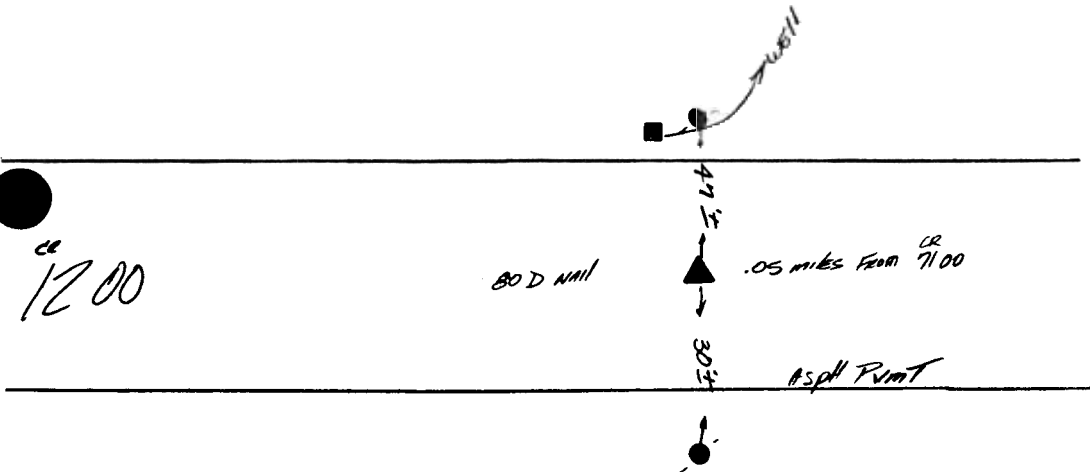
HORIZONTAL DATUM NAD27 VERTICAL DATUM NGVD 29

| PT NO | NORTHING | EASTING | ELEVATION | WGS84 LAT | WGS84 LONG | ELLIP HGHT |
|-------|------------|------------|-----------|------------------|-------------------|------------|
| 1013 | 706617.247 | 615892.492 | 3324.27 | 33°31'36.34382"N | 102°02'37.23787"W | 3240.00 |

POINT DESCRIPTION

80d NAIL

Wolf Forth
#1013



**U
S
G
S**

**P
O
I
N
T
Q
U
A
D**

**M
A
P
N
U
M
B
E
R**

**W
O
L
F
F
O
R
T
H
1
0
1
3**

**HORIZONTAL & VERTICAL CONTROL FOR
LUBBOCK, TEXAS
JANUARY, 2000**

HORIZONTAL DATUM NAD83 VERTICAL DATUM NAVD 88

| PT NO | NORTHING | EASTING | ELEVATION | WGS84 LAT | WGS84 LONG | ELLIP HGHT |
|-------|-------------|------------|-----------|------------------|-------------------|------------|
| 1014 | 7254028.630 | 888720.504 | 3318.37 | 33°31'10.76947"N | 102°02'37.15558"W | 3232.93 |

HORIZONTAL DATUM NAD27 VERTICAL DATUM NGVD 29

| PT NO | NORTHING | EASTING | ELEVATION | WGS84 LAT | WGS84 LONG | ELLIP HGHT |
|-------|------------|------------|-----------|------------------|-------------------|------------|
| 1014 | 704034.589 | 615787.664 | 3317.16 | 33°31'10.76947"N | 102°02'37.15558"W | 3232.93 |

POINT DESCRIPTION

80d NAIL

*WOLFFORTH
1014*

U
S
S

P
O
I
N
T

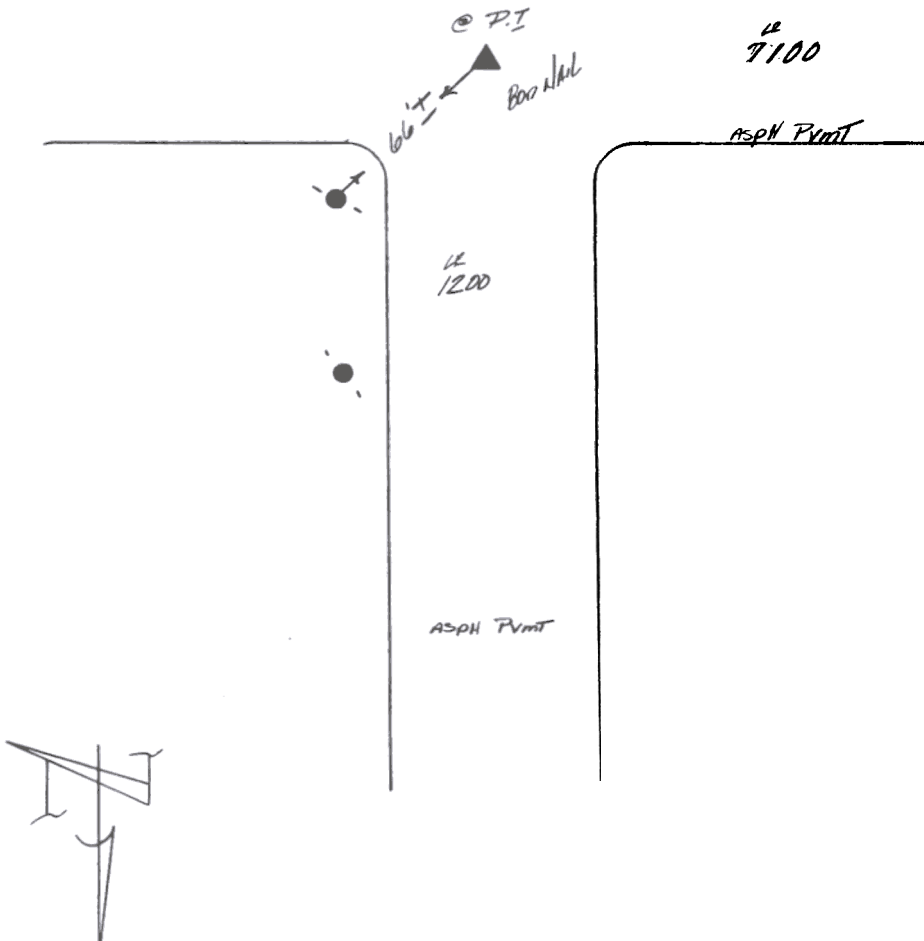
Q
U
A
D

M
A
P

W
O
L
F
F
O
R
T
H

N
U
M
B
E
R

1
0
1
4



HORIZONTAL & VERTICAL CONTROL FOR LUBBOCK, TEXAS JANUARY, 2000

HORIZONTAL DATUM NAD83 VERTICAL DATUM NAVD 88

| PT NO | NORTHING | EASTING | ELEVATION | WGS84 LAT | WGS84 LONG | ELLIP HGHT |
|-------|-------------|------------|-----------|------------------|-------------------|------------|
| 1015 | 7251113.673 | 893872.549 | 3309.53 | 33°30'43.65957"N | 102°01'35.17618"W | 3224.00 |

HORIZONTAL DATUM NAD27 VERTICAL DATUM NGVD 29

| PT NO | NORTHING | EASTING | ELEVATION | WGS84 LAT | WGS84 LONG | ELLIP HGHT |
|-------|------------|------------|-----------|------------------|-------------------|------------|
| 1015 | 701070.676 | 620911.623 | 3308.32 | 33°30'43.65957"N | 102°01'35.17618"W | 3224.00 |

POINT DESCRIPTION

80d NAIL

**U
S
G
S

Q
U
A
D

M
A
P

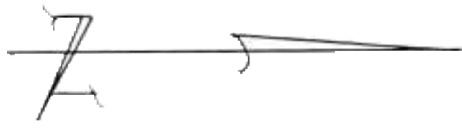
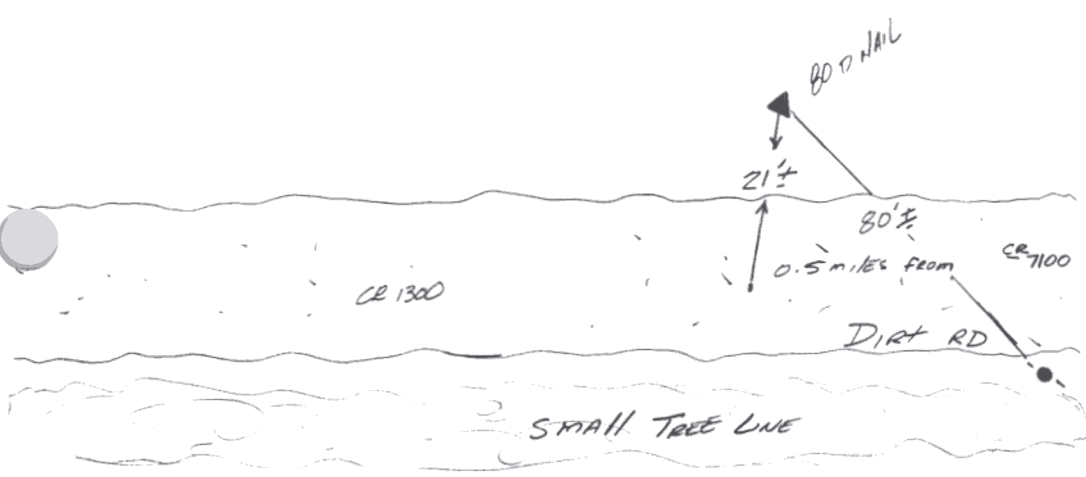
W
O
L
F
F
O
R
T
H

P
O
I
N
T

N
U
M
B
E
R

1
0
1
5**

*Wolf Forth
#1015*



**HORIZONTAL & VERTICAL CONTROL FOR
LUBBOCK, TEXAS
JANUARY, 2000**

HORIZONTAL DATUM NAD83 VERTICAL DATUM NAVD 88

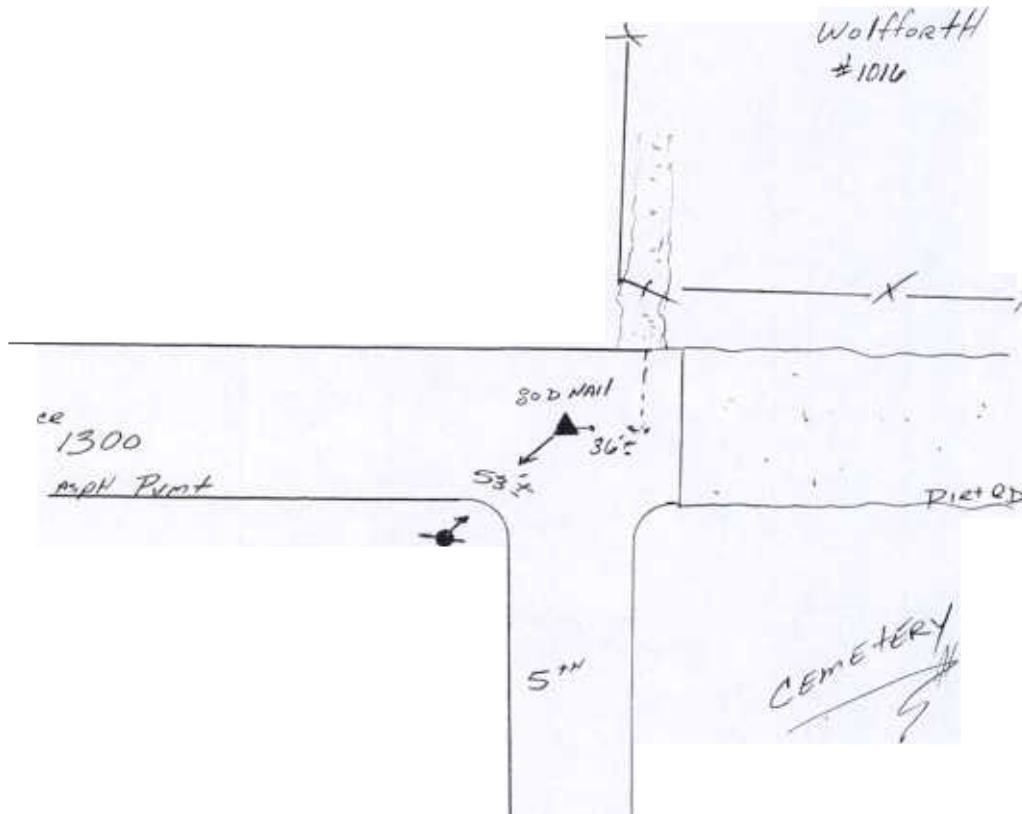
| PT NO | NORTHING | EASTING | ELEVATION | WGS84 LAT | WGS84 LONG | ELLIP HGHT |
|-------|-------------|------------|-----------|------------------|-------------------|------------|
| 1016 | 7248582.369 | 893820.717 | 3328.71 | 33°30'18.61137"N | 102°01'34.78476"W | 3243.22 |

HORIZONTAL DATUM NAD27 VERTICAL DATUM NGVD 29

| PT NO | NORTHING | EASTING | ELEVATION | WGS84 LAT | WGS84 LONG | ELLIP HGHT |
|-------|------------|------------|-----------|------------------|-------------------|------------|
| 1016 | 698540.011 | 620835.660 | 3327.50 | 33°30'18.61137"N | 102°01'34.78476"W | 3243.22 |

POINT DESCRIPTION

80d NAIL



**U
S
G
S**

**Q
U
A
D**

**M
A
P**

**W
O
L
F
F
O
R
T
H**

**P
O
I
N
T**

**N
U
M
B
E
R**

**1
0
1
6**



**HORIZONTAL & VERTICAL CONTROL FOR
LUBBOCK, TEXAS
JANUARY, 2000**

HORIZONTAL DATUM NAD83 VERTICAL DATUM NAVD 88

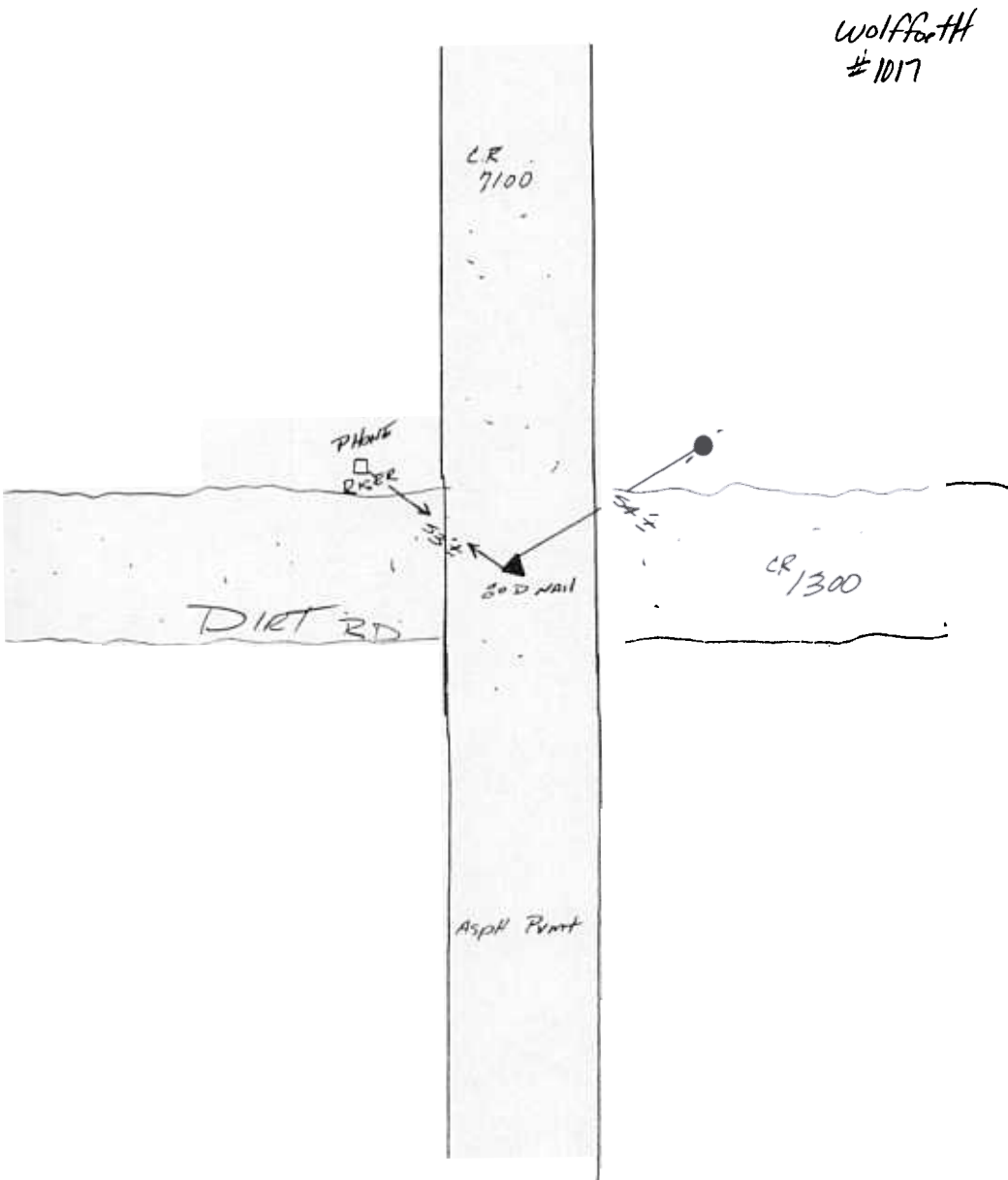
| PT NO | NORTHING | EASTING | ELEVATION | WGS84 LAT | WGS84 LONG | ELLIP HGHT |
|-------|-------------|------------|-----------|------------------|-------------------|------------|
| 1017 | 7253863.508 | 893995.445 | 3320.74 | 33°31'10.89228"N | 102°01'34.81530"W | 3235.16 |

HORIZONTAL DATUM NAD27 VERTICAL DATUM NGVD 29

| PT NO | NORTHING | EASTING | ELEVATION | WGS84 LAT | WGS84 LONG | ELLIP HGHT |
|-------|------------|------------|-----------|------------------|-------------------|------------|
| 1017 | 703819.183 | 621060.730 | 3319.53 | 33°31'10.89228"N | 102°01'34.81530"W | 3235.16 |

POINT DESCRIPTION

80d NAIL



*Wolfforth
#1017*

U
S
S

Q
U
A
D

M
A
P

W
O
L
F
F
O
R
T
H

P
O
I
N
T

N
U
M
B
E
R

1
0
1
7

**HORIZONTAL & VERTICAL CONTROL FOR
LUBBOCK, TEXAS
JANUARY, 2000**

HORIZONTAL DATUM NAD83 VERTICAL DATUM NAVD 88

| PT NO | NORTHING | EASTING | ELEVATION | WGS84 LAT | WGS84 LONG | ELLIP HGHT |
|-------|-------------|------------|-----------|------------------|-------------------|------------|
| 1018 | 7256507.214 | 894045.784 | 3314.90 | 33°31'37.05137"N | 102°01'35.26896"W | 3229.28 |

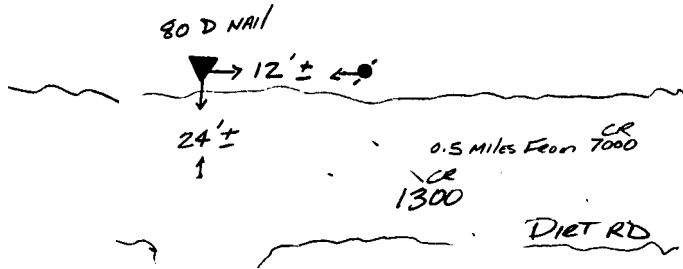
HORIZONTAL DATUM NAD27 VERTICAL DATUM NGVD 29

| PT NO | NORTHING | EASTING | ELEVATION | WGS84 LAT | WGS84 LONG | ELLIP HGHT |
|-------|------------|------------|-----------|------------------|-------------------|------------|
| 1018 | 706462.257 | 621136.272 | 3313.68 | 33°31'37.05137"N | 102°01'35.26896"W | 3229.28 |

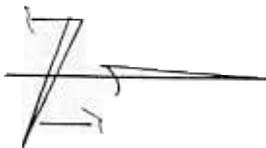
POINT DESCRIPTION

80d NAIL

*Wolfforth
#1018*



DIET



**U
S
G
S**

**P
O
I
N
T
Q
U
A
D**

**M
A
P
N
U
M
B
E
R**

**W
O
L
F
F
O
R
T
H**

**1
0
1
8**

HORIZONTAL & VERTICAL CONTROL FOR LUBBOCK, TEXAS JANUARY, 2000

HORIZONTAL DATUM NAD83 VERTICAL DATUM NAVD 88

| PT NO | NORTHING | EASTING | ELEVATION | WGS84 LAT | WGS84 LONG | ELLIP HGHT |
|-------|-------------|------------|-----------|------------------|-------------------|------------|
| 1019 | 7259187.983 | 894125.191 | 3319.06 | 33°32'03.58656"N | 102°01'35.39415"W | 3233.40 |

HORIZONTAL DATUM NAD27 VERTICAL DATUM NGVD 29

| PT NO | NORTHING | EASTING | ELEVATION | WGS84 LAT | WGS84 LONG | ELLIP HGHT |
|-------|------------|------------|-----------|------------------|-------------------|------------|
| 1019 | 709142.116 | 621241.235 | 3317.83 | 33°32'03.58656"N | 102°01'35.39415"W | 3233.40 |

POINT DESCRIPTION

80d NAIL

**U
S
G
S

Q
U
A
D

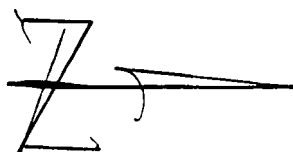
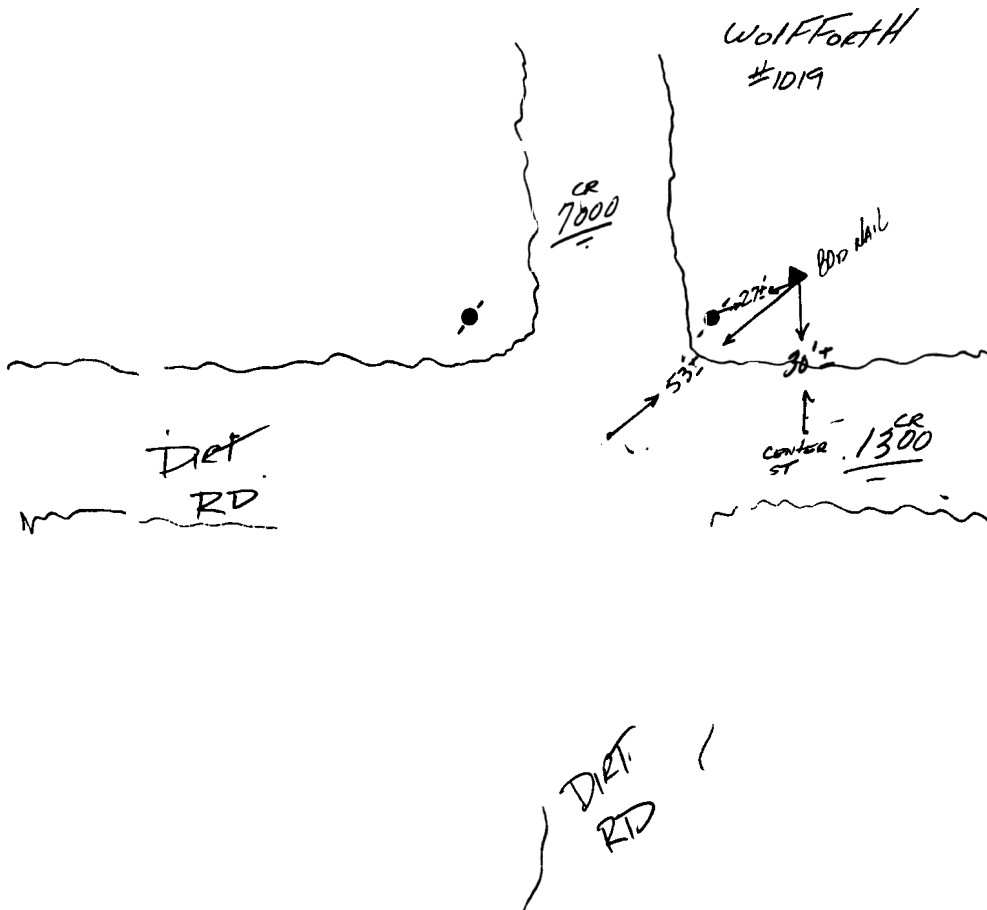
M
A
P

W
O
L
F
F
O
R
T
H

P
O
I
N
T

N
U
M
B
E
R

1
0
1
9**



HORIZONTAL & VERTICAL CONTROL FOR LUBBOCK, TEXAS JANUARY, 2000

HORIZONTAL DATUM NAD83 VERTICAL DATUM NAVD 88

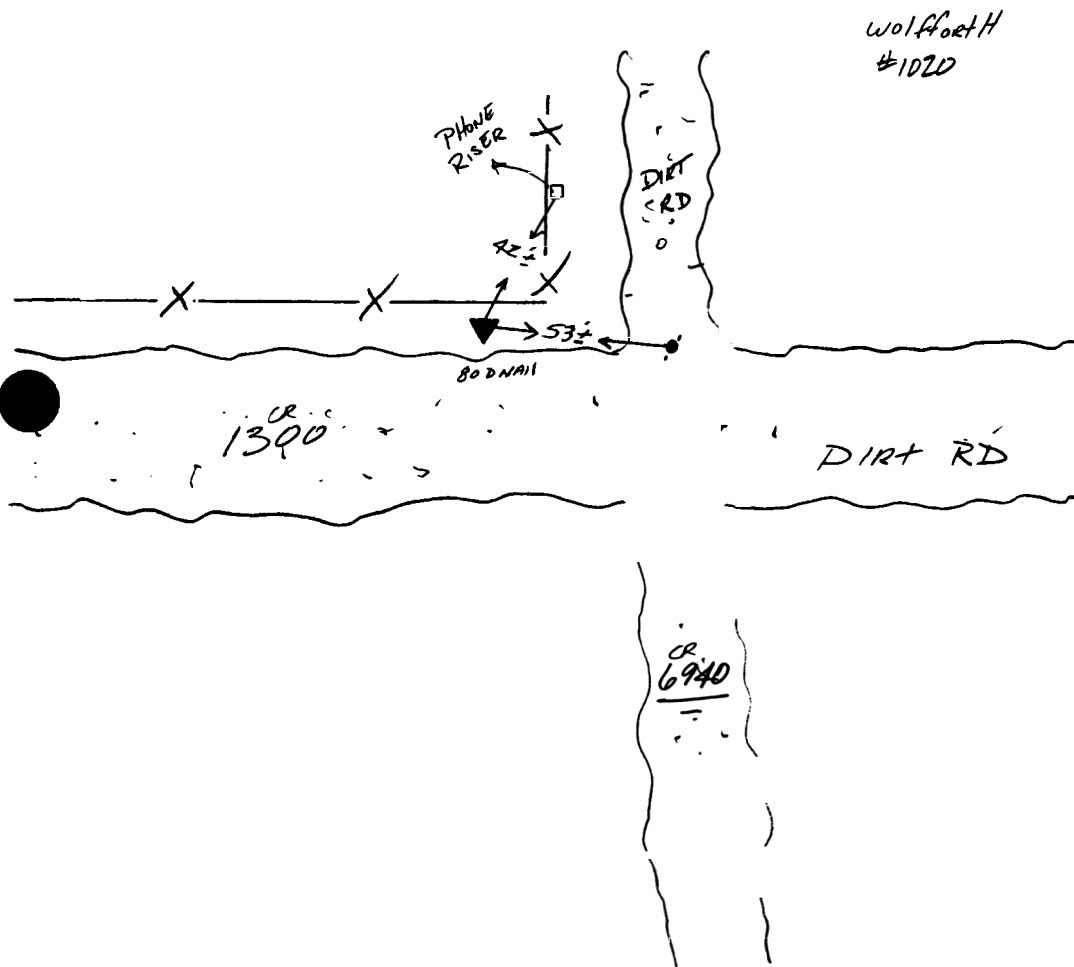
| PT NO | NORTHING | EASTING | ELEVATION | WGS84 LAT | WGS84 LONG | ELLIP HGHT |
|-------|-------------|------------|-----------|------------------|-------------------|------------|
| 1020 | 7261703.561 | 894211.082 | 3312.72 | 33°32'28.49034"N | 102°01'35.37731"W | 3227.02 |

HORIZONTAL DATUM NAD27 VERTICAL DATUM NGVD 29

| PT NO | NORTHING | EASTING | ELEVATION | WGS84 LAT | WGS84 LONG | ELLIP HGHT |
|-------|------------|------------|-----------|------------------|-------------------|------------|
| 1020 | 711656.731 | 621351.105 | 3311.50 | 33°32'28.49034"N | 102°01'35.37731"W | 3227.02 |

POINT DESCRIPTION

80d NAIL



U
S
G
S

Q
U
A
D

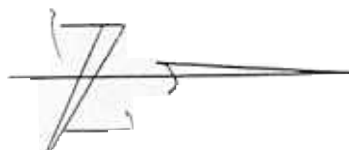
M
A
P

W
O
L
F
O
R
T
H

P
O
I
N
T

N
U
M
B
E
R

1
0
2
0



**HORIZONTAL & VERTICAL CONTROL FOR
LUBBOCK, TEXAS
JANUARY, 2000**

HORIZONTAL DATUM NAD83 VERTICAL DATUM NAVD 88

| PT NO | NORTHING | EASTING | ELEVATION | WGS84 LAT | WGS84 LONG | ELLIP HGHT |
|-------|-------------|------------|-----------|------------------|-------------------|------------|
| 1021 | 7264416.341 | 894331.350 | 3310.71 | 33°32'55.35551"N | 102°01'35.03268"W | 3224.96 |

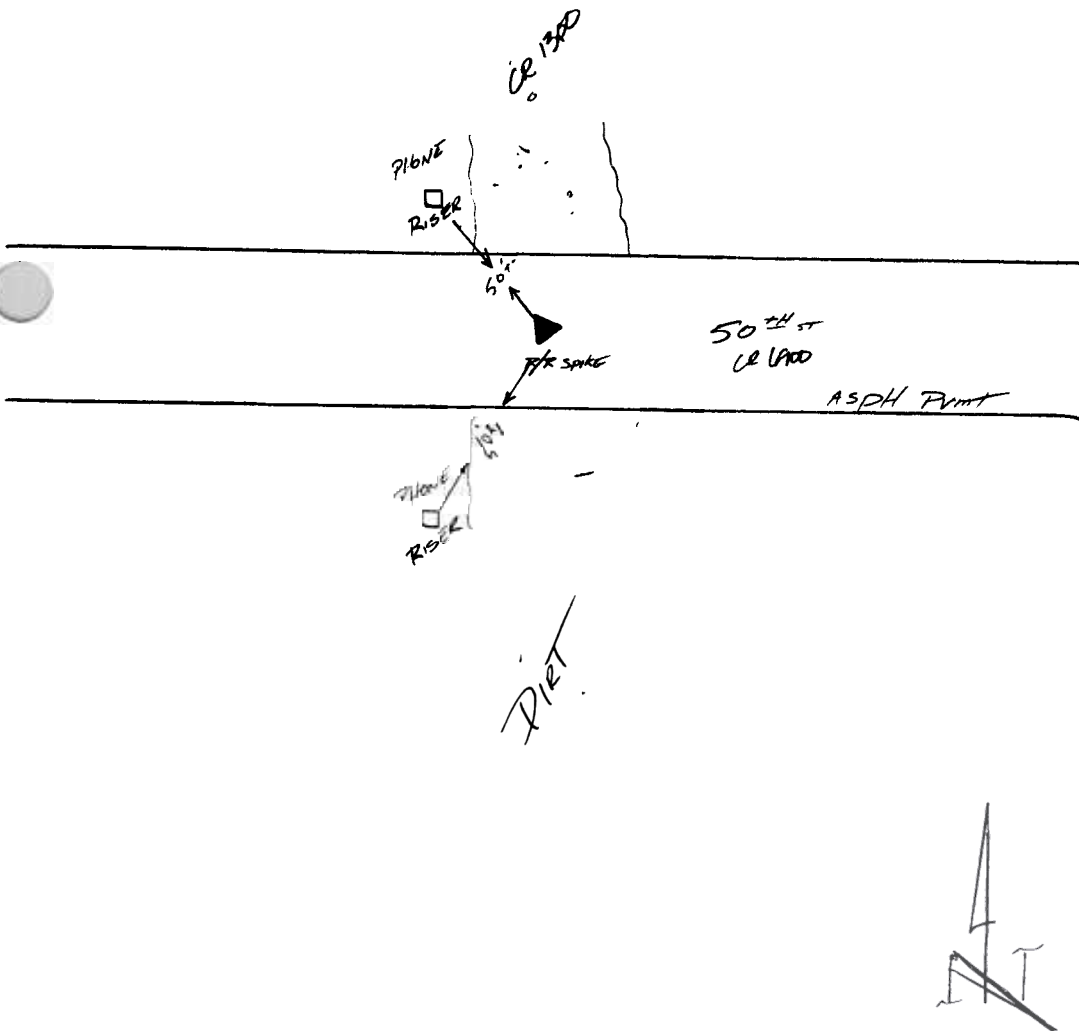
HORIZONTAL DATUM NAD27 VERTICAL DATUM NGVD 29

| PT NO | NORTHING | EASTING | ELEVATION | WGS84 LAT | WGS84 LONG | ELLIP HGHT |
|-------|------------|------------|-----------|------------------|-------------------|------------|
| 1021 | 714368.209 | 621497.230 | 3309.48 | 33°32'55.35551"N | 102°01'35.03268"W | 3224.96 |

POINT DESCRIPTION

RR SPIKE FND

*WolfForth
#1021*



**U
S
G
S**

**Q
U
A
D**

**M
A
P
N
U
M
B
E
R**

**W
O
L
F
F
O
R
T
H**

**P
O
I
N
T
N
U
M
B
E
R
1
0
2
1**

HORIZONTAL & VERTICAL CONTROL FOR LUBBOCK, TEXAS JANUARY, 2000

HORIZONTAL DATUM NAD83 VERTICAL DATUM NAVD 88

| PT NO | NORTHING | EASTING | ELEVATION | WGS84 LAT | WGS84 LONG | ELLIP HGHT |
|-------|-------------|------------|-----------|------------------|-------------------|------------|
| 1022 | 7267039.101 | 894443.742 | 3316.89 | 33°33'21.32786"N | 102°01'34.74531"W | 3231.09 |

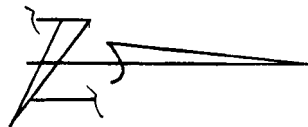
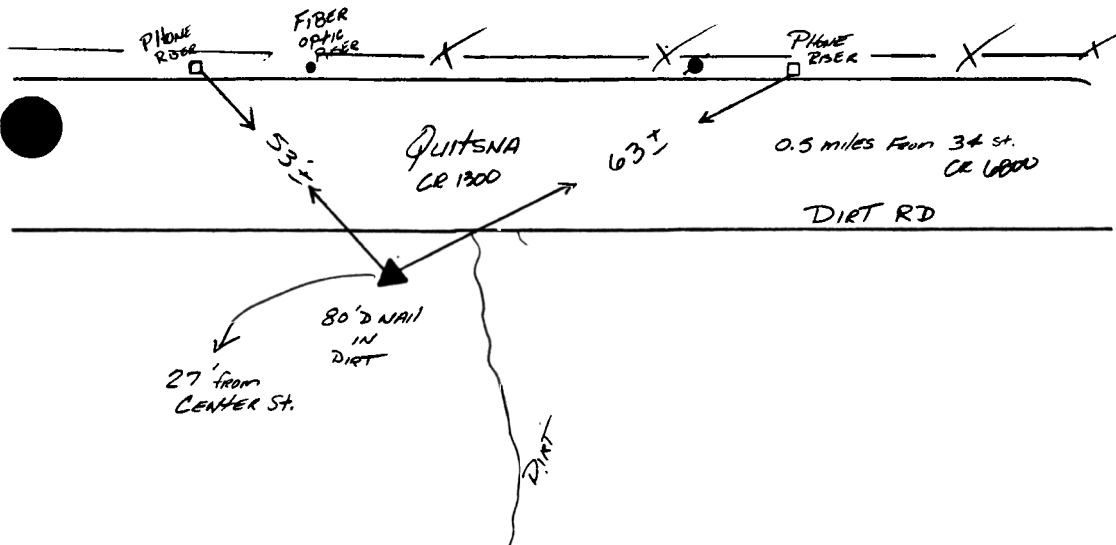
HORIZONTAL DATUM NAD27 VERTICAL DATUM NGVD 29

| PT NO | NORTHING | EASTING | ELEVATION | WGS84 LAT | WGS84 LONG | ELLIP HGHT |
|-------|------------|------------|-----------|------------------|-------------------|------------|
| 1022 | 716989.749 | 621634.622 | 3315.65 | 33°33'21.32786"N | 102°01'34.74531"W | 3231.09 |

POINT DESCRIPTION

80d NAIL

*Wolfforth
#1022*



U
S
S

Q
U
A
D

M
A
P

W
O
L
F
F
O
R
T
H

P
O
I
N
T

N
U
M
B
E
R

1
0
2
2

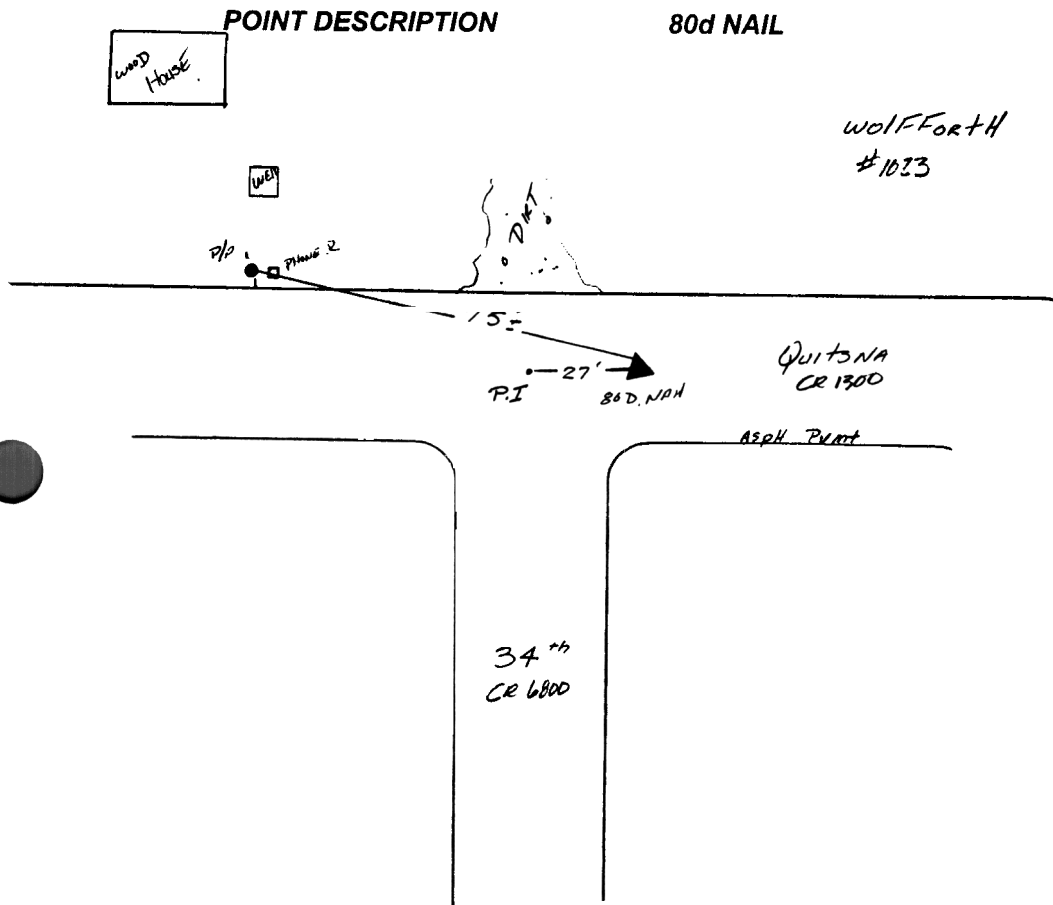
**HORIZONTAL & VERTICAL CONTROL FOR
LUBBOCK, TEXAS
JANUARY, 2000**

HORIZONTAL DATUM NAD83 VERTICAL DATUM NAVD 88

| PT NO | NORTHING | EASTING | ELEVATION | WGS84 LAT | WGS84 LONG | ELLIP HGHT |
|-------|-------------|------------|-----------|------------------|-------------------|------------|
| 1023 | 7269722.374 | 894501.070 | 3320.63 | 33°33'47.88022"N | 102°01'35.13229"W | 3234.78 |

HORIZONTAL DATUM NAD27 VERTICAL DATUM NGVD 29

| PT NO | NORTHING | EASTING | ELEVATION | WGS84 LAT | WGS84 LONG | ELLIP HGHT |
|-------|------------|------------|-----------|------------------|-------------------|------------|
| 1023 | 719672.321 | 621717.531 | 3319.38 | 33°33'47.88022"N | 102°01'35.13229"W | 3234.78 |



U
S
G
S

P
O
I
N
T

Q
U
A
D

M
A
P

N
U
M
B
E
R

W
O
L
F
O
R
T
H

1
0
2
3

HORIZONTAL & VERTICAL CONTROL FOR LUBBOCK, TEXAS JANUARY, 2000

HORIZONTAL DATUM NAD83 VERTICAL DATUM NAVD 88

| PT NO | NORTHING | EASTING | ELEVATION | WGS84 LAT | WGS84 LONG | ELLIP HGHT |
|-------|-------------|------------|-----------|------------------|-------------------|------------|
| 1245 | 7277743.176 | 891595.181 | 3329.07 | 33°35'06.22661"N | 102°02'12.64583"W | 3243.17 |

HORIZONTAL DATUM NAD27 VERTICAL DATUM NGVD 29

| PT NO | NORTHING | EASTING | ELEVATION | WGS84 LAT | WGS84 LONG | ELLIP HGHT |
|-------|------------|------------|-----------|------------------|-------------------|------------|
| 1245 | 727720.372 | 618888.282 | 3327.81 | 33°35'06.22661"N | 102°02'12.64583"W | 3243.17 |

POINT DESCRIPTION

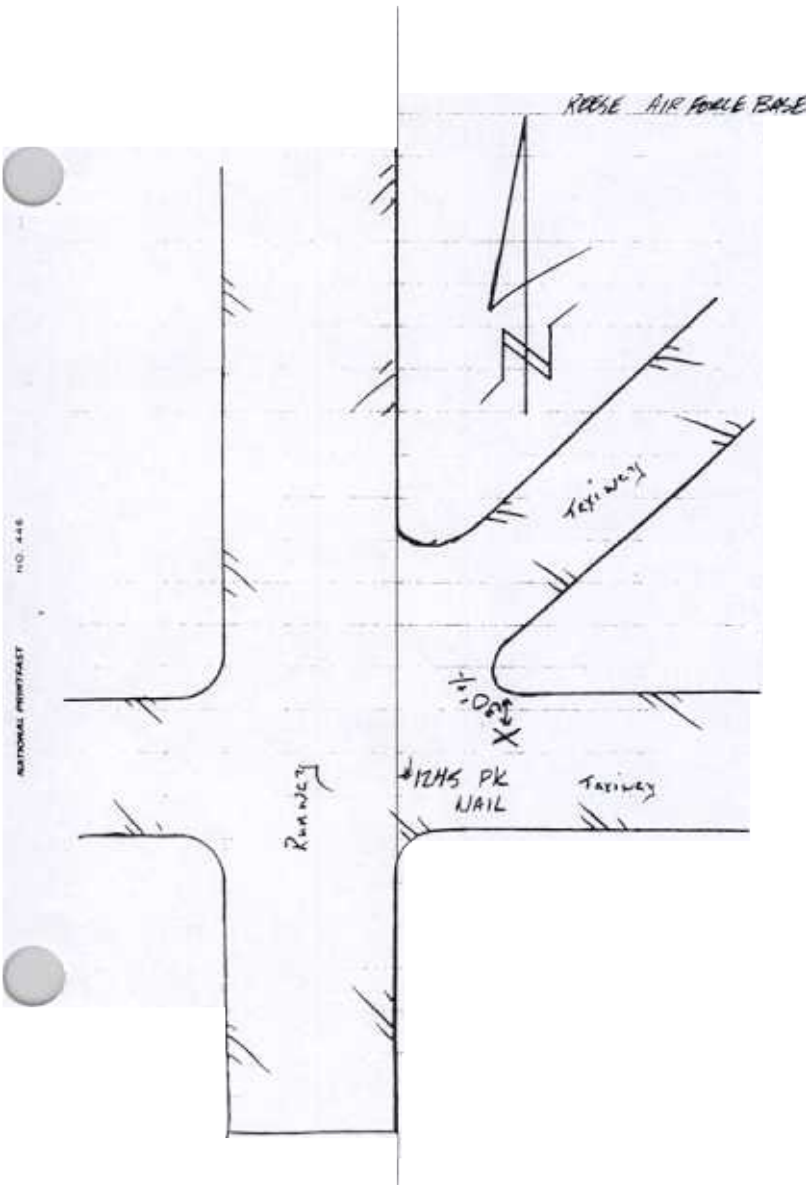
PK NAIL

**U
S
G
S**

**P
O
I
N
T
Q
U
A
D**

**M
A
P
N
U
M
B
E
R**

**W
O
L
F
F
O
R
T
H
1
2
4
5**



HORIZONTAL & VERTICAL CONTROL FOR LUBBOCK, TEXAS JANUARY, 2000

HORIZONTAL DATUM NAD83 VERTICAL DATUM NAVD 88

| PT NO | NORTHING | EASTING | ELEVATION | WGS84 LAT | WGS84 LONG | ELLIP HGHT |
|-------|-------------|------------|-----------|------------------|-------------------|------------|
| 1246 | 7277632.864 | 889827.069 | 3327.19 | 33°35'04.54656"N | 102°02'33.49124"W | 3241.33 |

HORIZONTAL DATUM NAD27 VERTICAL DATUM NGVD 29

| PT NO | NORTHING | EASTING | ELEVATION | WGS84 LAT | WGS84 LONG | ELLIP HGHT |
|-------|------------|------------|-----------|------------------|-------------------|------------|
| 1246 | 727626.924 | 617119.219 | 3325.93 | 33°35'04.54656"N | 102°02'33.49124"W | 3241.33 |

POINT DESCRIPTION

X-CUT IN CONC.

U
S
G
S

Q
U
A
D

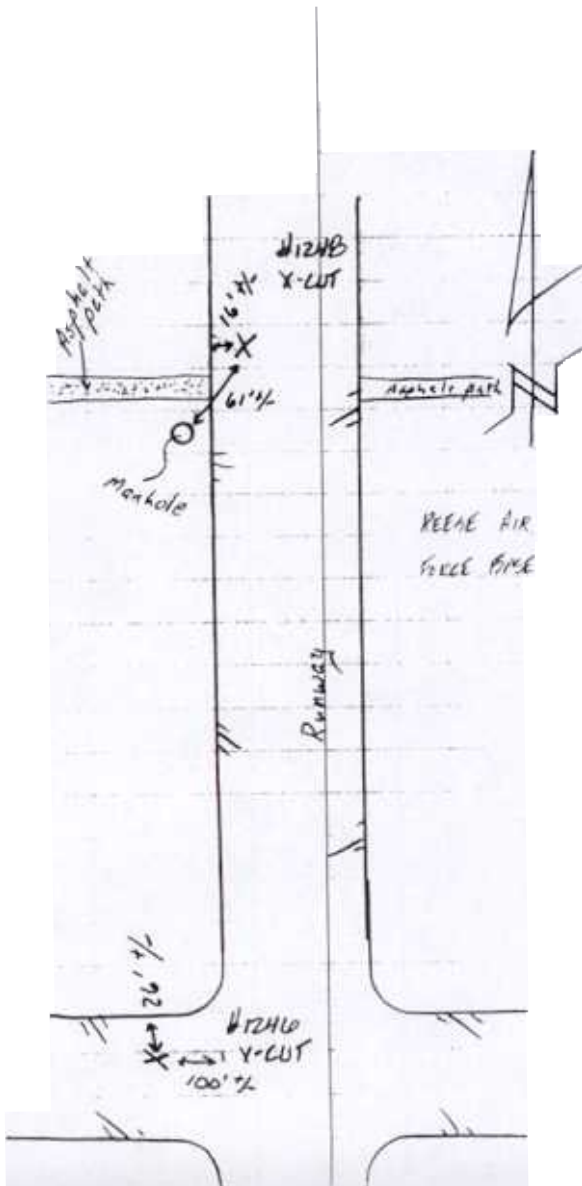
M
A
P

W
O
L
F
F
O
R
T
H

P
O
I
N
T

N
U
M
B
E
R

1
2
4
6



**HORIZONTAL & VERTICAL CONTROL FOR
LUBBOCK, TEXAS
JANUARY, 2000**

HORIZONTAL DATUM NAD83 VERTICAL DATUM NAVD 88

| PT NO | NORTHING | EASTING | ELEVATION | WGS84 LAT | WGS84 LONG | ELLIP HGHT |
|-------|-------------|------------|-----------|------------------|-------------------|------------|
| 1248 | 7280346.032 | 890029.396 | 3325.17 | 33°35'31.44261"N | 102°02'32.18197"W | 3239.27 |

HORIZONTAL DATUM NAD27 VERTICAL DATUM NGVD 29

| PT NO | NORTHING | EASTING | ELEVATION | WGS84 LAT | WGS84 LONG | ELLIP HGHT |
|-------|------------|------------|-----------|------------------|-------------------|------------|
| 1248 | 730338.008 | 617347.402 | 3323.91 | 33°35'31.44261"N | 102°02'32.18197"W | 3239.27 |

POINT DESCRIPTION

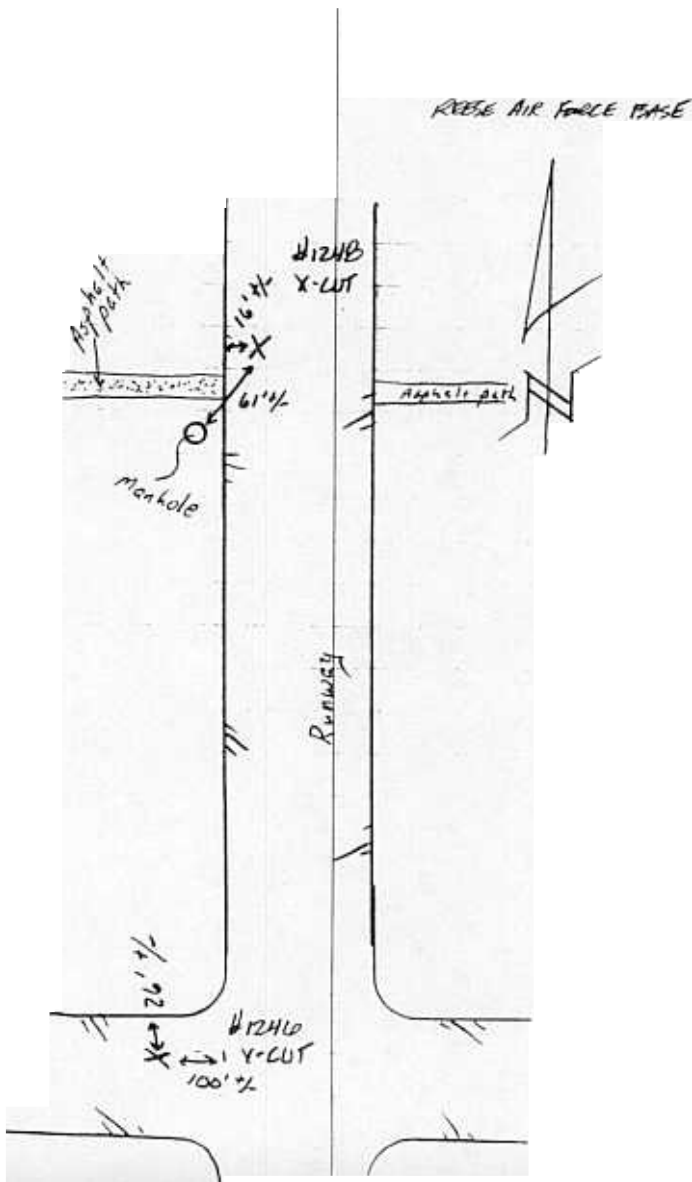
X-CUT IN CONC.

**U
S
G
S**

**P
O
I
N
T
Q
U
A
D**

**M
A
P
N
U
M
B
E
R**

**W
O
L
F
F
O
R
T
H
1
2
4
8**



HORIZONTAL & VERTICAL CONTROL FOR LUBBOCK, TEXAS JANUARY, 2000

HORIZONTAL DATUM NAD83 VERTICAL DATUM NAVD 88

| PT NO | NORTHING | EASTING | ELEVATION | WGS84 LAT | WGS84 LONG | ELLIP HGHT |
|-------|-------------|------------|-----------|------------------|-------------------|------------|
| 1249 | 7282805.276 | 890095.890 | 3323.61 | 33°35'55.78242"N | 102°02'32.37634"W | 3237.67 |

HORIZONTAL DATUM NAD27 VERTICAL DATUM NGVD 29

| PT NO | NORTHING | EASTING | ELEVATION | WGS84 LAT | WGS84 LONG | ELLIP HGHT |
|-------|------------|------------|-----------|------------------|-------------------|------------|
| 1249 | 732796.477 | 617437.340 | 3322.35 | 33°35'55.78242"N | 102°02'32.37634"W | 3237.67 |

POINT DESCRIPTION

X-CUT IN CONC.

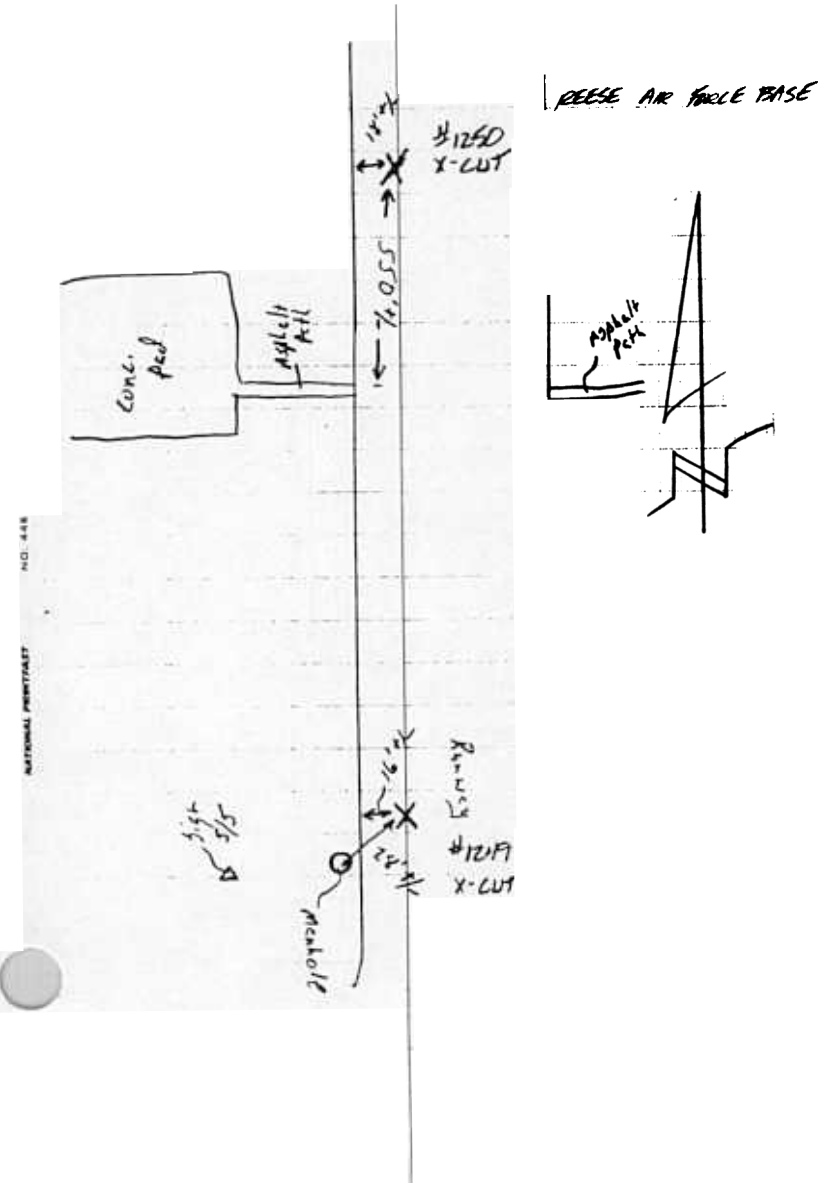
**U
S
G
S**

**Q
U
A
D**

**M
A
P
N
U
M
B
E
R**

**W
O
L
F
F
O
R
T
H**

**1
2
4
9**



HORIZONTAL & VERTICAL CONTROL FOR LUBBOCK, TEXAS JANUARY, 2000

HORIZONTAL DATUM NAD83 VERTICAL DATUM NAVD 88

| PT NO | NORTHING | EASTING | ELEVATION | WGS84 LAT | WGS84 LONG | ELLIP HGHT |
|-------|-------------|------------|-----------|------------------|-------------------|------------|
| 1250 | 7285395.796 | 890167.079 | 3327.82 | 33°36'21.42184"N | 102°02'32.56756"W | 3241.82 |

HORIZONTAL DATUM NAD27 VERTICAL DATUM NGVD 29

| PT NO | NORTHING | EASTING | ELEVATION | WGS84 LAT | WGS84 LONG | ELLIP HGHT |
|-------|------------|------------|-----------|------------------|-------------------|------------|
| 1250 | 735386.170 | 617533.224 | 3326.54 | 33°36'21.42184"N | 102°02'32.56756"W | 3241.82 |

POINT DESCRIPTION

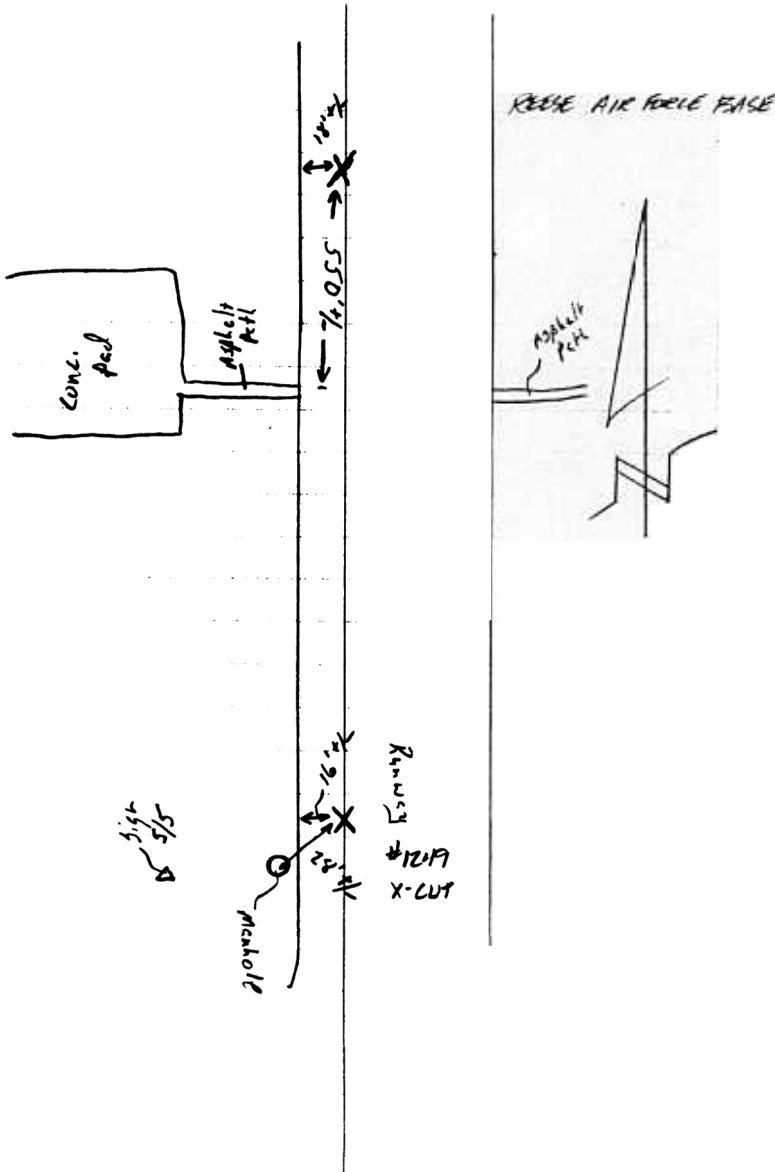
X-CUT IN CONC.

**U
S
G
S**

**P
O
I
N
T
Q
U
A
D**

**M
A
P
N
U
M
B
E
R**

**W
O
L
F
F
O
R
T
H
1
2
5
0**



HORIZONTAL & VERTICAL CONTROL FOR LUBBOCK, TEXAS JANUARY, 2000

HORIZONTAL DATUM NAD83 VERTICAL DATUM NAVD 88

| PT NO | NORTHING | EASTING | ELEVATION | WGS84 LAT | WGS84 LONG | ELLIP HGHT |
|-------|-------------|------------|-----------|------------------|-------------------|------------|
| 1251 | 7288039.893 | 890233.228 | 3333.79 | 33°36'47.58930"N | 102°02'32.83975"W | 3247.74 |

HORIZONTAL DATUM NAD27 VERTICAL DATUM NGVD 29

| PT NO | NORTHING | EASTING | ELEVATION | WGS84 LAT | WGS84 LONG | ELLIP HGHT |
|-------|------------|------------|-----------|------------------|-------------------|------------|
| 1251 | 738029.485 | 617624.579 | 3332.51 | 33°36'47.58930"N | 102°02'32.83975"W | 3247.74 |

POINT DESCRIPTION

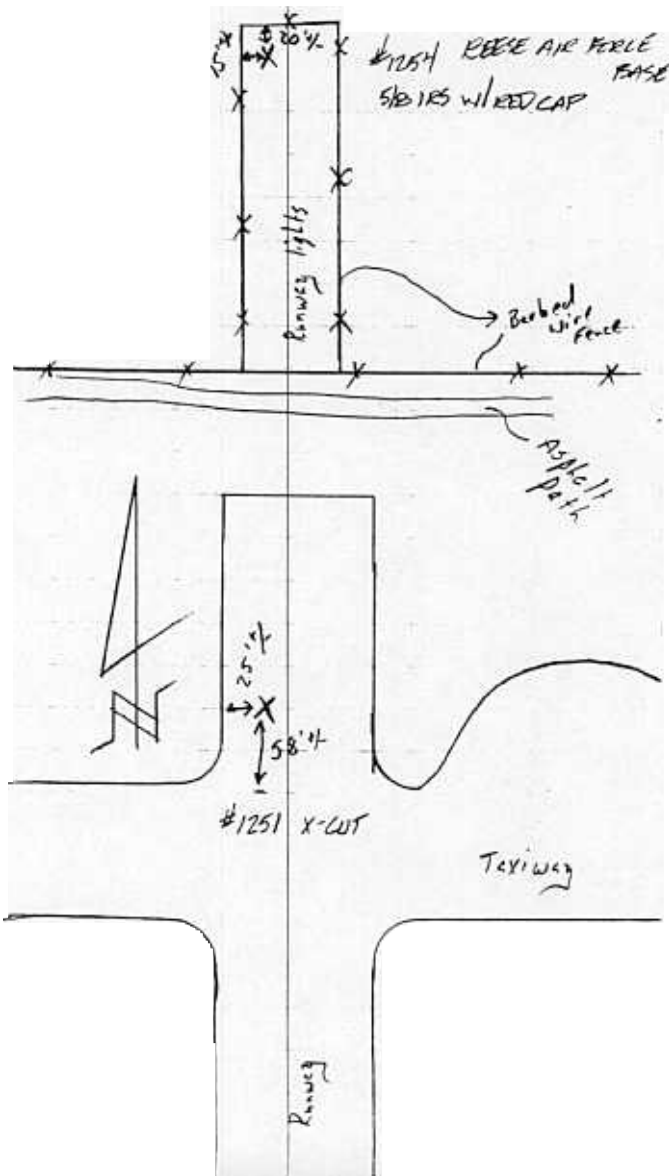
X-CUT IN CONC.

**U
S
G
S**

**P
O
I
N
T
Q
U
A
D**

**M
A
P
N
U
M
B
E
R**

**W
O
L
F
F
O
R
T
H
1
2
5
1**



**HORIZONTAL & VERTICAL CONTROL FOR
LUBBOCK, TEXAS
JANUARY, 2000**

HORIZONTAL DATUM NAD83 VERTICAL DATUM NAVD 88

| PT NO | NORTHING | EASTING | ELEVATION | WGS84 LAT | WGS84 LONG | ELLIP HGHT |
|-------|-------------|------------|-----------|------------------|-------------------|------------|
| 1253 | 7285029.901 | 891571.876 | 3326.89 | 33°36'18.27199"N | 102°02'15.82097"W | 3240.87 |

HORIZONTAL DATUM NAD27 VERTICAL DATUM NGVD 29

| PT NO | NORTHING | EASTING | ELEVATION | WGS84 LAT | WGS84 LONG | ELLIP HGHT |
|-------|------------|------------|-----------|------------------|-------------------|------------|
| 1253 | 735006.902 | 618934.452 | 3325.62 | 33°36'18.27199"N | 102°02'15.82097"W | 3240.87 |

POINT DESCRIPTION

X-CUT IN CONC.

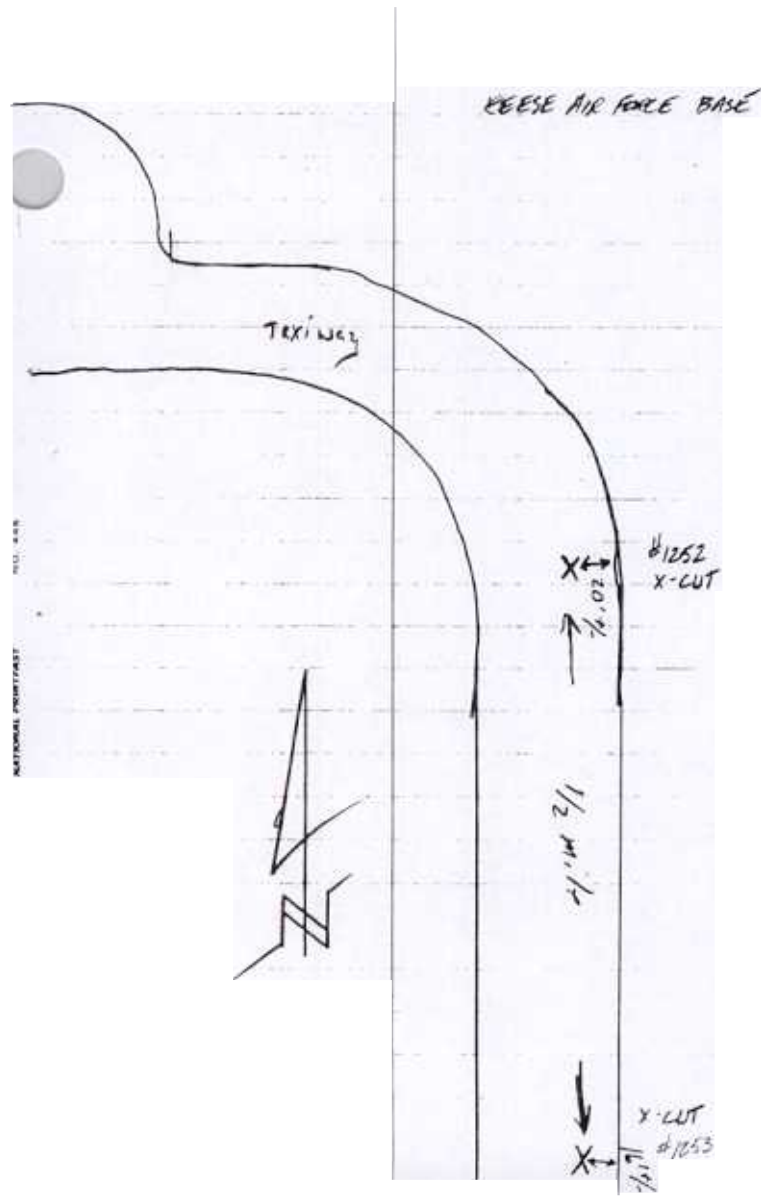
**U
S
G
S**

**Q
U
A
D**

**M
A
P
N
U
M
B
E
R**

**W
O
L
F
F
O
R
T
H**

**1
2
5
3**



HORIZONTAL & VERTICAL CONTROL FOR LUBBOCK, TEXAS JANUARY, 2000

HORIZONTAL DATUM NAD83 VERTICAL DATUM NAVD 88

| PT NO | NORTHING | EASTING | ELEVATION | WGS84 LAT | WGS84 LONG | ELLIP HGHT |
|-------|-------------|------------|-----------|------------------|-------------------|------------|
| 1254 | 7291312.739 | 890358.710 | 3324.91 | 33°37'19.99366"N | 102°02'32.66136"W | 3238.81 |

HORIZONTAL DATUM NAD27 VERTICAL DATUM NGVD 29

| PT NO | NORTHING | EASTING | ELEVATION | WGS84 LAT | WGS84 LONG | ELLIP HGHT |
|-------|------------|------------|-----------|------------------|-------------------|------------|
| 1254 | 741300.948 | 617781.258 | 3323.62 | 33°37'19.99366"N | 102°02'32.66136"W | 3238.81 |

POINT DESCRIPTION 5/8" IRS W/RED CAP

U
S
S

Q
U
A
D

M
A
P

W
O
L
F
F
O
R
T
H

P
O
I
N
T

N
U
M
B
E
R

1
2
5
4

