

**HORIZONTAL & VERTICAL CONTROL FOR
LUBBOCK, TEXAS
JANUARY, 2000**

HORIZONTAL DATUM NAD83 VERTICAL DATUM NAVD 88

PT NO	NORTHING	EASTING	ELEVATION	WGS84 LAT	WGS84 LONG	ELLIP HGHT
801	7241679.445	919990.891	3273.10	33°29'18.93221"N	101°56'23.19910"W	3187.205

HORIZONTAL DATUM NAD27 VERTICAL DATUM NGVD 29

PT NO	NORTHING	EASTING	ELEVATION	WGS84 LAT	WGS84 LONG	ELLIP HGHT
801	691387.965	646938.526	3171.896	33°29'18.93219"N	101°56'23.19909"W	3087.198

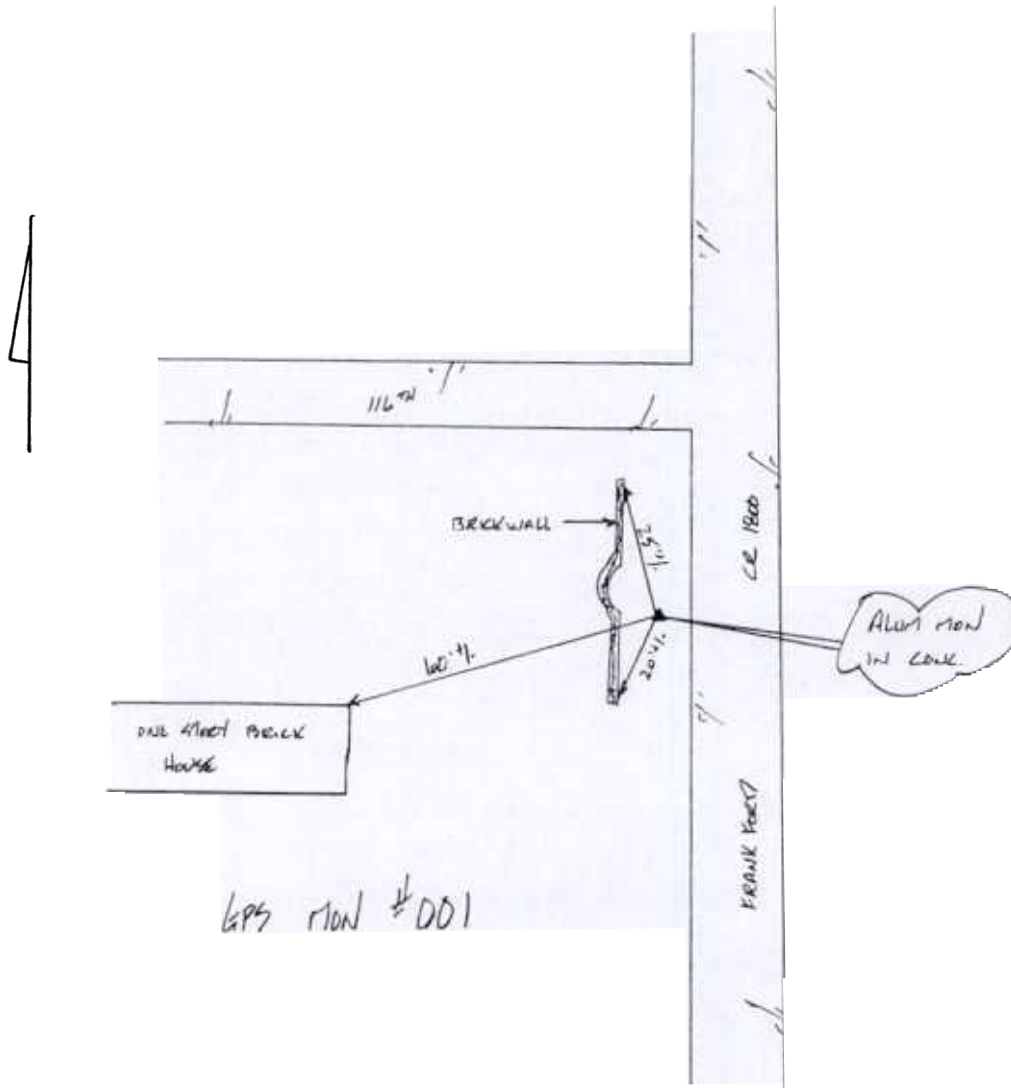
POINT DESCRIPTION

MON LUBBOCK 001

**P
O
I
N
T**

**N
U
M
B
E
R**

**8
0
1**



HORIZONTAL & VERTICAL CONTROL FOR LUBBOCK, TEXAS JANUARY, 2000

HORIZONTAL DATUM NAD83 VERTICAL DATUM NAVD 88

PT NO	NORTHING	EASTING	ELEVATION	WGS84 LAT	WGS84 LONG	ELLIP HGHT
802	7250273.981	901145.524	3284.16	33°30'37.76275"N	102°00'08.98913"W	3198.409

HORIZONTAL DATUM NAD27 VERTICAL DATUM NGVD 29

PT NO	NORTHING	EASTING	ELEVATION	WGS84 LAT	WGS84 LONG	ELLIP HGHT
802	700161.691	628176.180	3282.954	33°30'37.76277"N	102°00'08.98910"W	3198.412

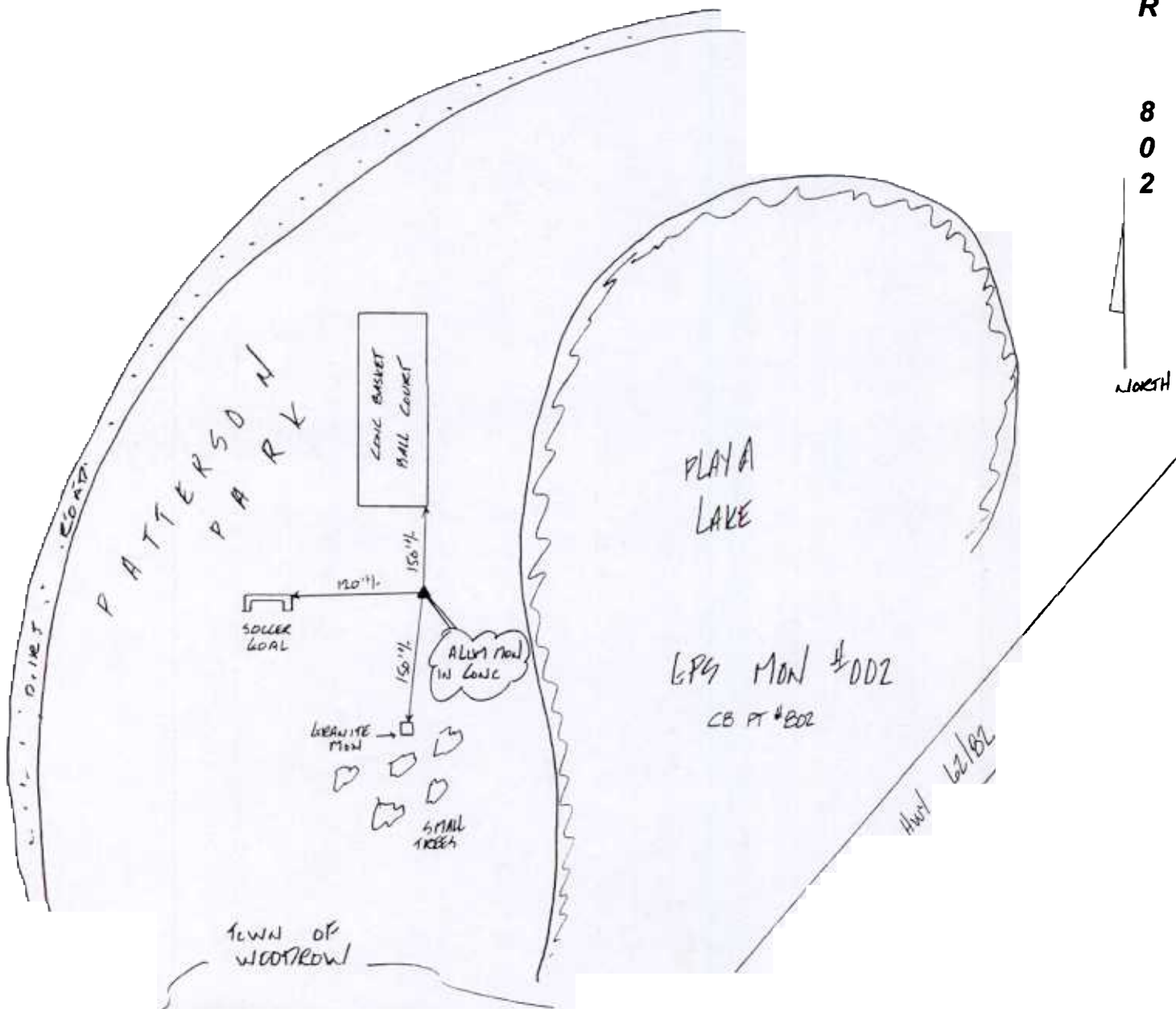
POINT DESCRIPTION

MON LUBBOCK 002

**P
O
I
N
T**

**N
U
M
B
E
R**

**8
0
2**



**HORIZONTAL & VERTICAL CONTROL FOR
LUBBOCK, TEXAS
JANUARY, 2000**

HORIZONTAL DATUM NAD83 VERTICAL DATUM NAVD 88

PT NO	NORTHING	EASTING	ELEVATION	WGS84 LAT	WGS84 LONG	ELLIP HGHT
803	7261358.504	924510.863	3254.81	33°32'34.99655"N	101°55'37.43259"W	3168.497

HORIZONTAL DATUM NAD27 VERTICAL DATUM NGVD 29

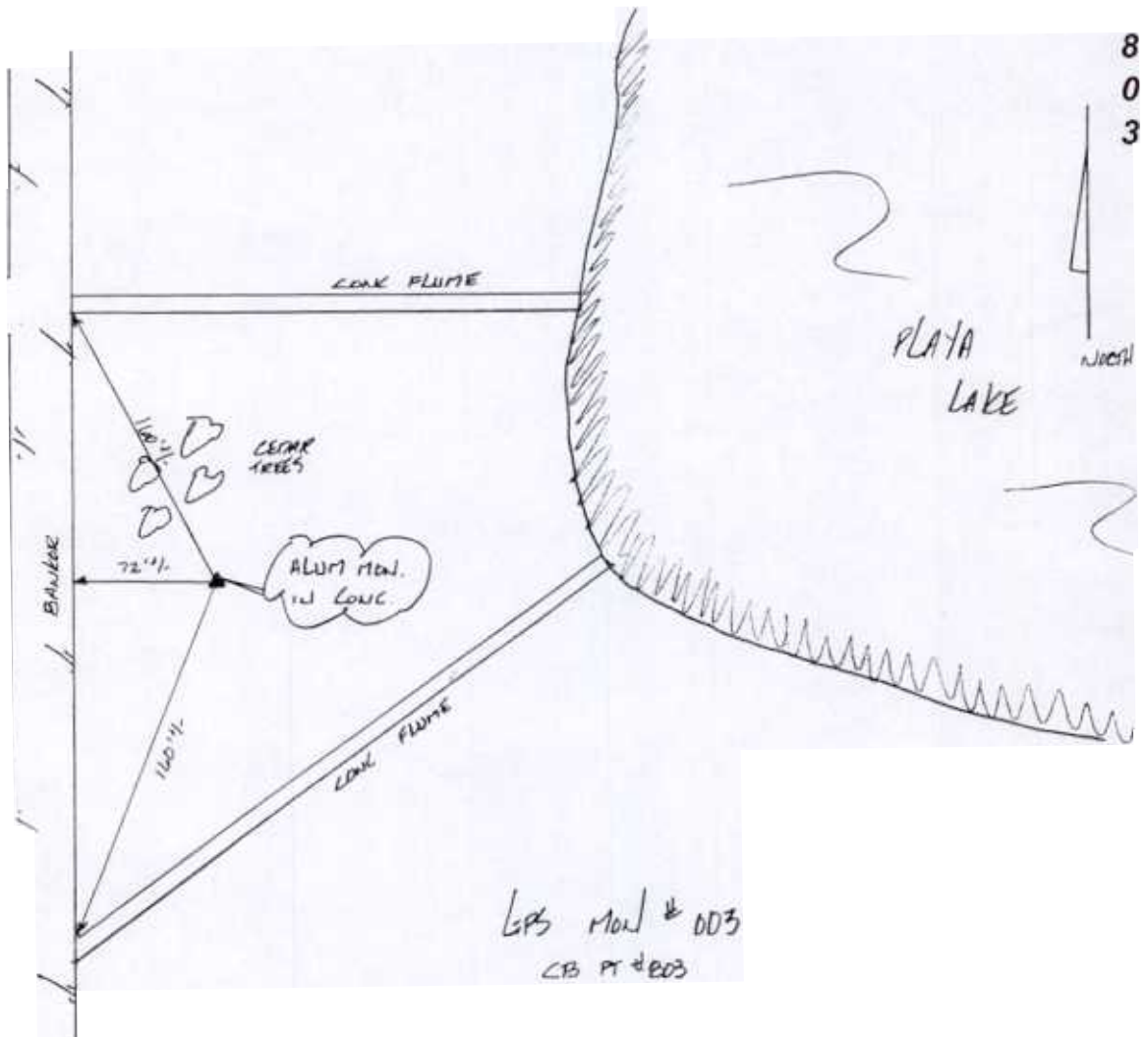
PT NO	NORTHING	EASTING	ELEVATION	WGS84 LAT	WGS84 LONG	ELLIP HGHT
803	711022.807	651645.866	3253.572	33°32'34.99658"N	101°55'37.43259"W	3168.496

POINT DESCRIPTION

MON LUBBOCK 003

**P
O
I
N
T

N
U
M
B
E
R**



GPS MON # 003
CB PT # 803

MALL -

HORIZONTAL & VERTICAL CONTROL FOR LUBBOCK, TEXAS JANUARY, 2000

HORIZONTAL DATUM NAD83 VERTICAL DATUM NAVD 88

PT NO	NORTHING	EASTING	ELEVATION	WGS84 LAT	WGS84 LONG	ELLIP HGHT
804	7269414.072	905851.379	3293.01	33°33'48.58011"N	101°59'20.94391"W	3206.834

HORIZONTAL DATUM NAD27 VERTICAL DATUM NGVD 29

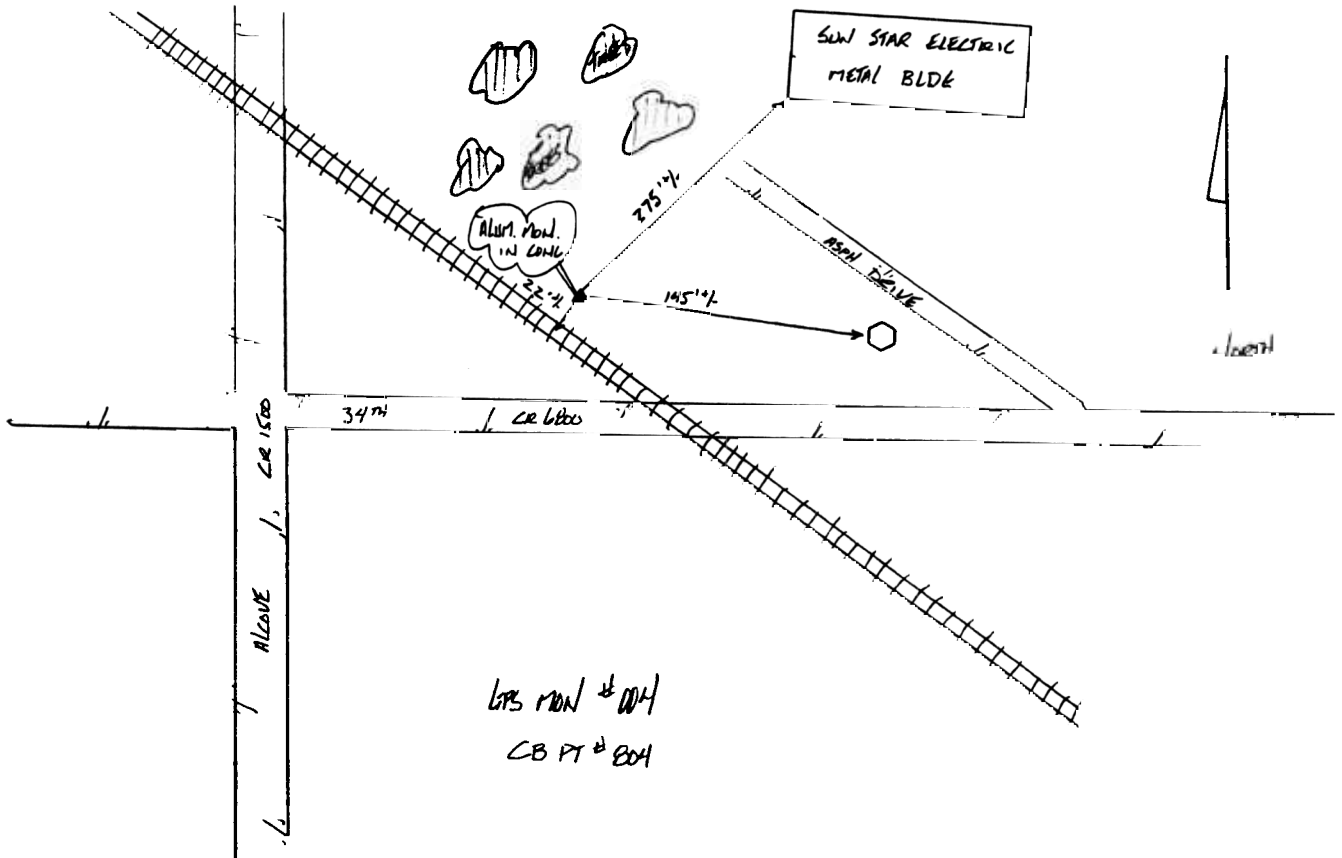
PT NO	NORTHING	EASTING	ELEVATION	WGS84 LAT	WGS84 LONG	ELLIP HGHT
804	719255.821	633064.254	3291.798	33°33'48.58014"N	101°59'20.94389"W	3206.868

POINT DESCRIPTION MON LUBBOCK 004

P
O
I
N
T

N
U
M
B
E
R

8
0
4



**HORIZONTAL & VERTICAL CONTROL FOR
LUBBOCK, TEXAS
JANUARY, 2000**

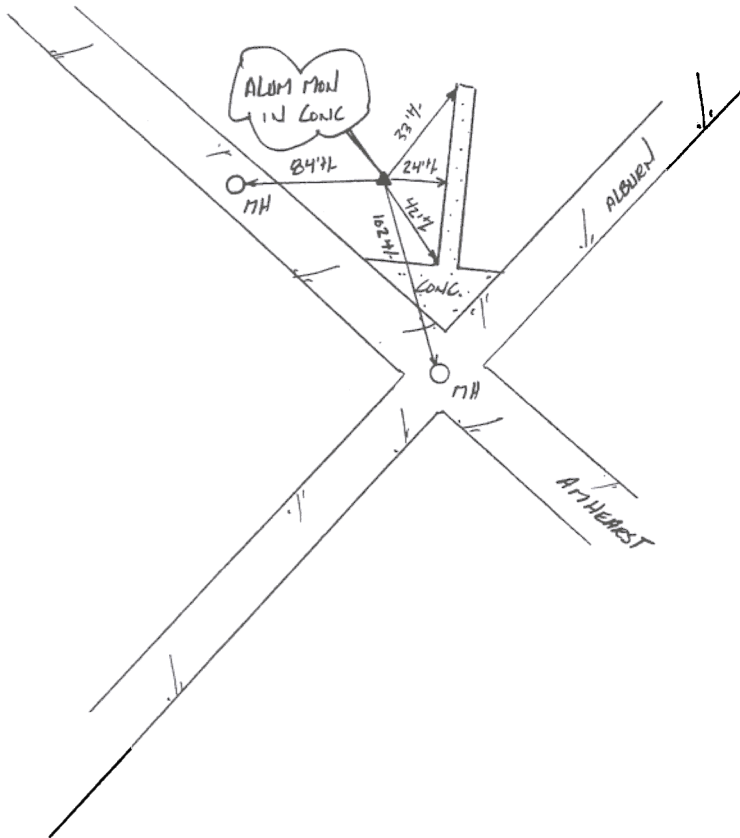
HORIZONTAL DATUM NAD83 VERTICAL DATUM NAVD 88

PT NO	NORTHING	EASTING	ELEVATION	WGS84 LAT	WGS84 LONG	ELLIP HGHT
805	7281634.304	921859.438	3259.82	33°35'54.64061"N	101°56'16.58152"W	3173.168

HORIZONTAL DATUM NAD27 VERTICAL DATUM NGVD 29

PT NO	NORTHING	EASTING	ELEVATION	WGS84 LAT	WGS84 LONG	ELLIP HGHT
805	731322.726	649187.911	3258.543	33°35'54.64063"N	101°56'16.58150"W	3173.168

POINT DESCRIPTION MON LUBBOCK 005



LEAS MON #005
CB PT # 805

P
O
I
N
T

N
U
M
B
E
R

8
0
5

HORIZONTAL & VERTICAL CONTROL FOR LUBBOCK, TEXAS JANUARY, 2000

HORIZONTAL DATUM NAD83 VERTICAL DATUM NAVD 88

PT NO	NORTHING	EASTING	ELEVATION	WGS84 LAT	WGS84 LONG	ELLIP HGHT
806	7270622.791	943451.408	3205.52	33°34'12.66639"N	101°51'57.25996"W	3118.658

HORIZONTAL DATUM NAD27 VERTICAL DATUM NGVD 29

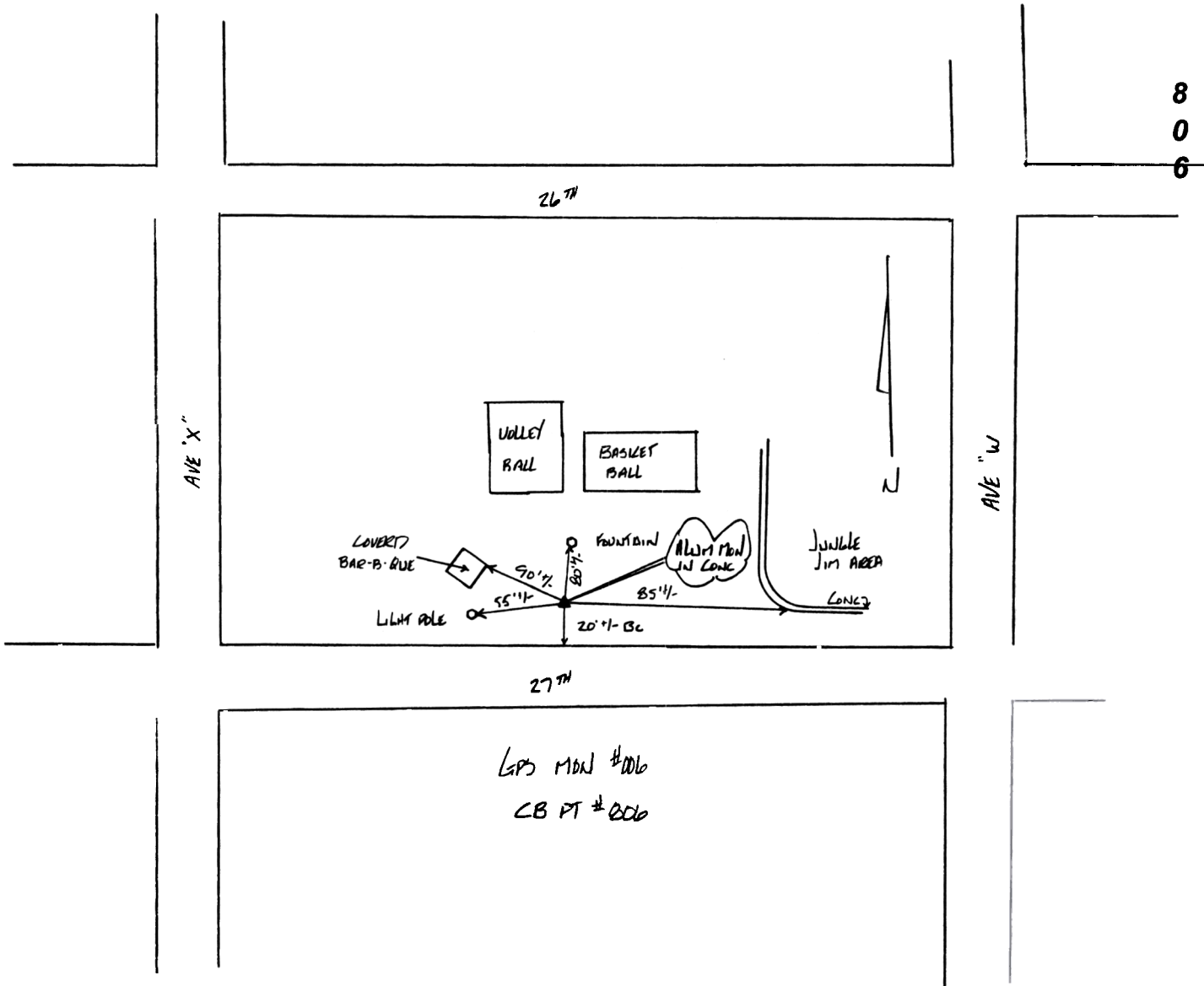
PT NO	NORTHING	EASTING	ELEVATION	WGS84 LAT	WGS84 LONG	ELLIP HGHT
806	720105.978	670673.659	3204.264	33°34'12.66642"N	101°51'57.25994"W	3118.660

POINT DESCRIPTION MON LUBBOCK 006

**P
O
I
N
T

N
U
M
B
E
R**

**8
0
6**



GPS MON #006
CB PT #006

**HORIZONTAL & VERTICAL CONTROL FOR
LUBBOCK, TEXAS
JANUARY, 2000**

HORIZONTAL DATUM NAD83 VERTICAL DATUM NAVD 88

PT NO	NORTHING	EASTING	ELEVATION	WGS84 LAT	WGS84 LONG	ELLIP HGHT
807	7297041.901	958552.094	3252.15	33°38'38.67280"N	101°49'08.73290"W	3164.556

HORIZONTAL DATUM NAD27 VERTICAL DATUM NGVD 29

PT NO	NORTHING	EASTING	ELEVATION	WGS84 LAT	WGS84 LONG	ELLIP HGHT
807	746379.597	686025.377	3250.867	33°38'38.67278"N	101°49'08.73282"W	3164.584

POINT DESCRIPTION

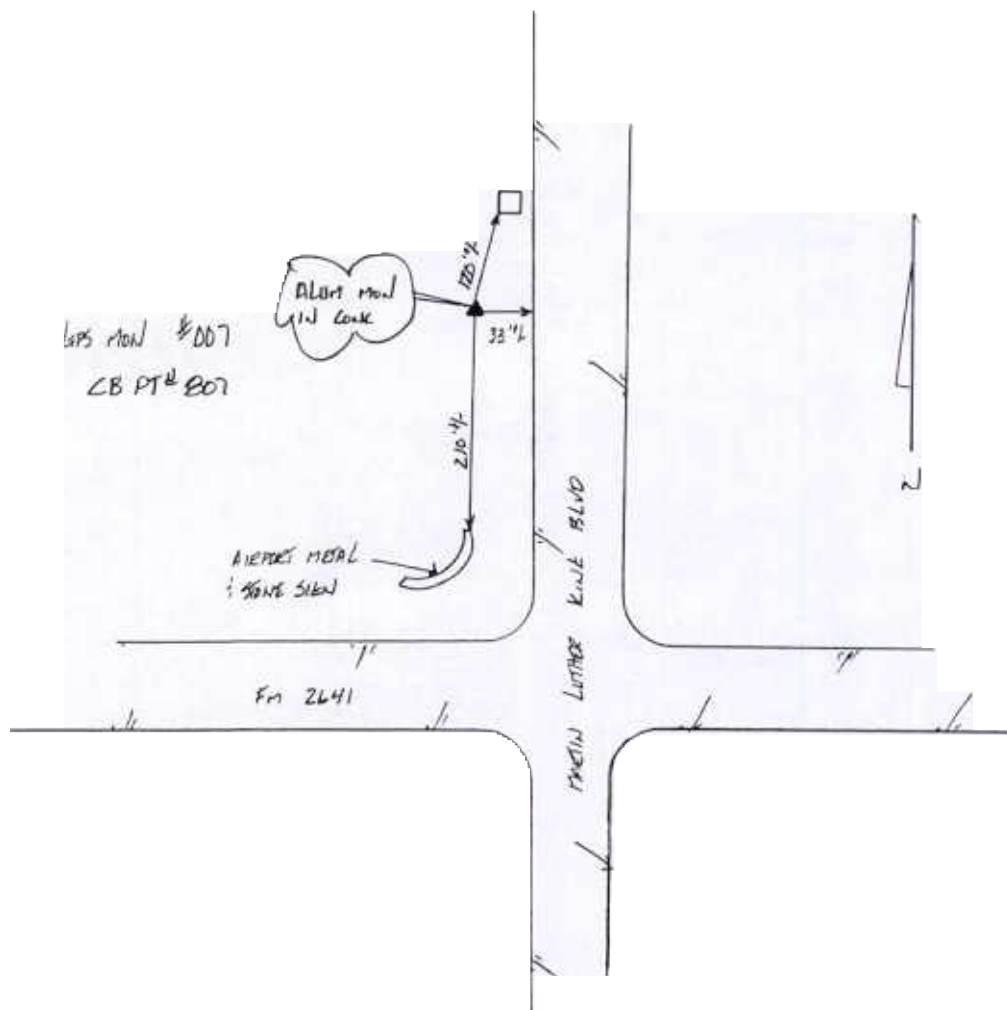
MON LUBBOCK 007

**P
O
I
N
T

N
U
M
B
E
R**

**8
0
7**

A I R P O R T



**HORIZONTAL & VERTICAL CONTROL FOR
LUBBOCK, TEXAS
JANUARY, 2000**

HORIZONTAL DATUM NAD83 VERTICAL DATUM NAVD 88

PT NO	NORTHING	EASTING	ELEVATION	WGS84 LAT	WGS84 LONG	ELLIP HGHT
808	7285048.643	972674.985	3190.03	33°36'44.45415"N	101°46'17.33525"W	3102.409

HORIZONTAL DATUM NAD27 VERTICAL DATUM NGVD 29

PT NO	NORTHING	EASTING	ELEVATION	WGS84 LAT	WGS84 LONG	ELLIP HGHT
808	734252.376	700033.106	3188.758	33°36'44.45417"N	101°46'17.33526"W	3102.432

POINT DESCRIPTION

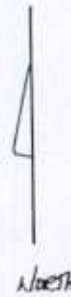
MON LUBBOCK 008

**P
O
I
N
T

N
U
M
B
E
R**

LUBBOCK CHILDRENS HOME

Mon. FOUND S.E. QUART OF PROPERTY



Two Street Brick
510x40
BLDG

OPEN FIELD



ALONG ROAD IN CORNER

17 ROWS OF TREES IN A ROW

679 Mon # 008
CB PT # 808

FARM

FIELD

8
0
8

HORIZONTAL & VERTICAL CONTROL FOR LUBBOCK, TEXAS JANUARY, 2000

HORIZONTAL DATUM NAD83 VERTICAL DATUM NAVD 88

PT NO	NORTHING	EASTING	ELEVATION	WGS84 LAT	WGS84 LONG	ELLIP HGHT
809	7262301.799	963697.211	3163.80	33°32'56.73174"N	101°47'55.00106"W	3076.706

HORIZONTAL DATUM NAD27 VERTICAL DATUM NGVD 29

PT NO	NORTHING	EASTING	ELEVATION	WGS84 LAT	WGS84 LONG	ELLIP HGHT
809	711592.430	690838.966	3162.533	33°32'56.73177"N	101°47'55.00109"W	3076.690

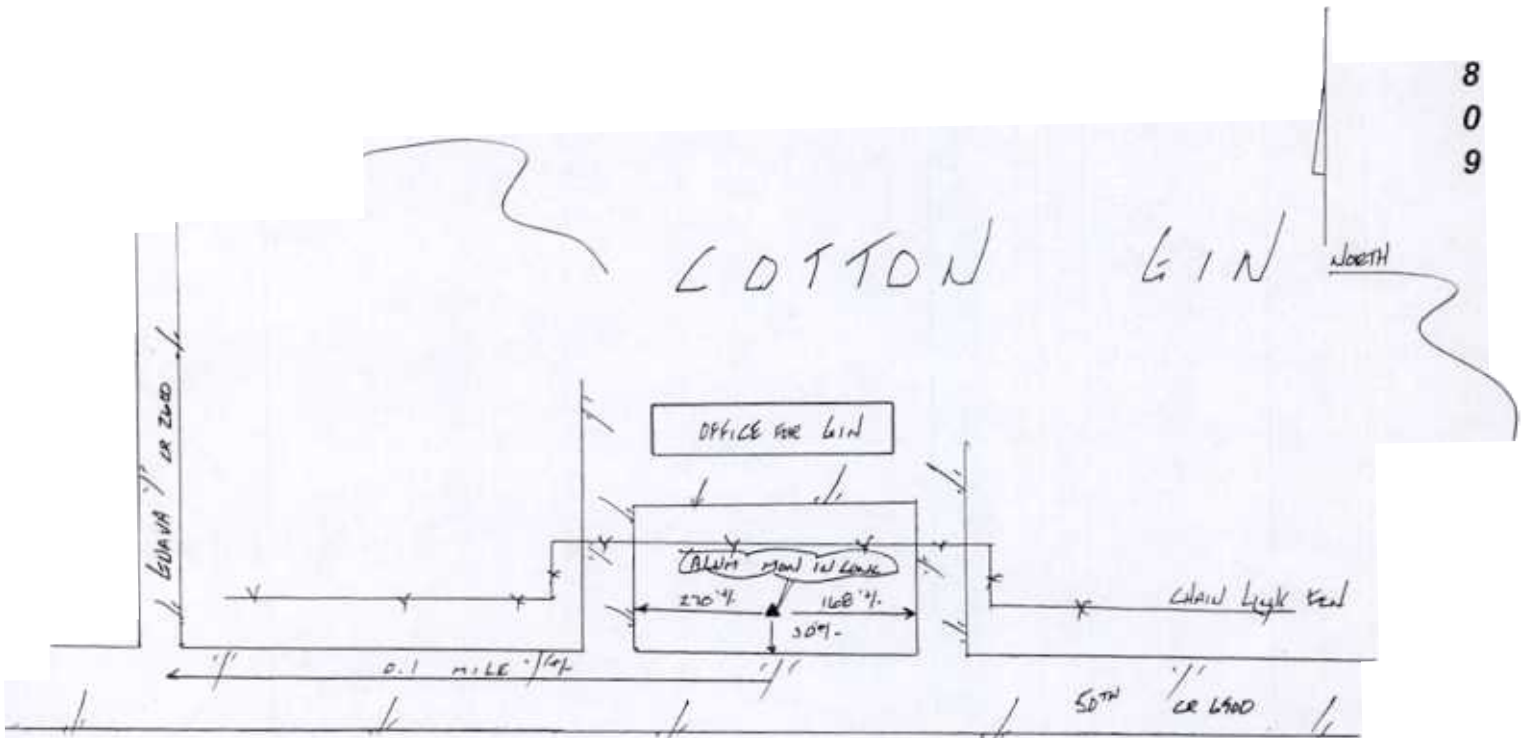
POINT DESCRIPTION

MON LUBBOCK 009

**P
O
I
N
T

N
U
M
B
E
R**

**8
0
9**



LPS MON # 009
CB PT # 809

HORIZONTAL & VERTICAL CONTROL FOR LUBBOCK, TEXAS JANUARY, 2000

HORIZONTAL DATUM NAD83 VERTICAL DATUM NAVD 88

PT NO	NORTHING	EASTING	ELEVATION	WGS84 LAT	WGS84 LONG	ELLIP HGHT
811	7294144.237	940332.118	3258.53	33°38'04.27407"N	101°52'43.04657"W	3171.295

HORIZONTAL DATUM NAD27 VERTICAL DATUM NGVD 29

PT NO	NORTHING	EASTING	ELEVATION	WGS84 LAT	WGS84 LONG	ELLIP HGHT
811	743655.817	667778.807	3257.202	33°38'04.27406"N	101°52'43.04658"W	3171.274

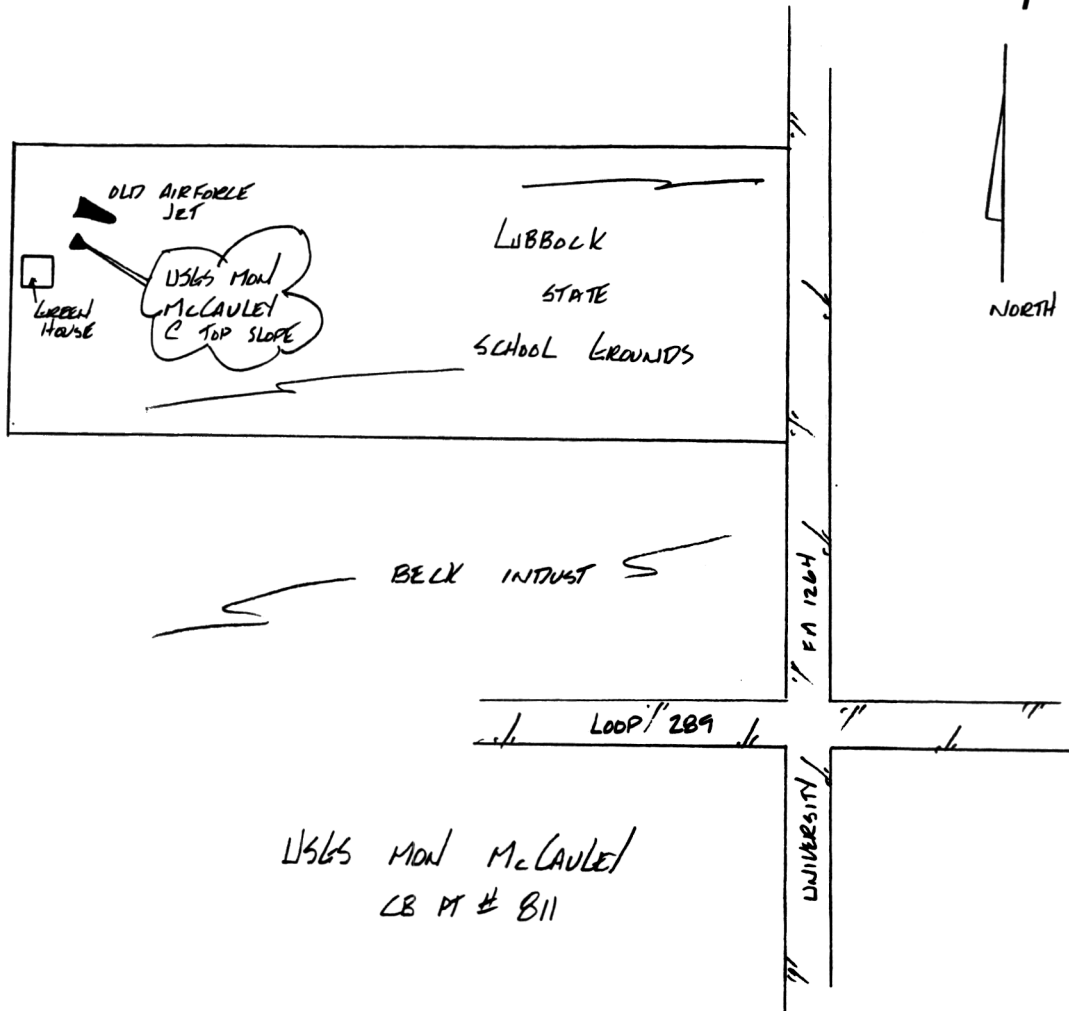
POINT DESCRIPTION

USGS McCAULEY

P
O
I
N
T

N
U
M
B
E
R

8
1
1



USGS MON McCAULEY
CB PT # 811

**HORIZONTAL & VERTICAL CONTROL FOR
LUBBOCK, TEXAS
JANUARY, 2000**

HORIZONTAL DATUM NAD83 VERTICAL DATUM NAVD 88

PT NO	NORTHING	EASTING	ELEVATION	WGS84 LAT	WGS84 LONG	ELLIP HGHT
812	7234293.468	994114.585	3144.73	33°28'29.04556"N	101°41'45.67812"W	3057.540

HORIZONTAL DATUM NAD27 VERTICAL DATUM NGVD 29

PT NO	NORTHING	EASTING	ELEVATION	WGS84 LAT	WGS84 LONG	ELLIP HGHT
812	683295.688	720987.557	3143.510	33°28'29.04559"N	101°41'45.67818"W	3057.519

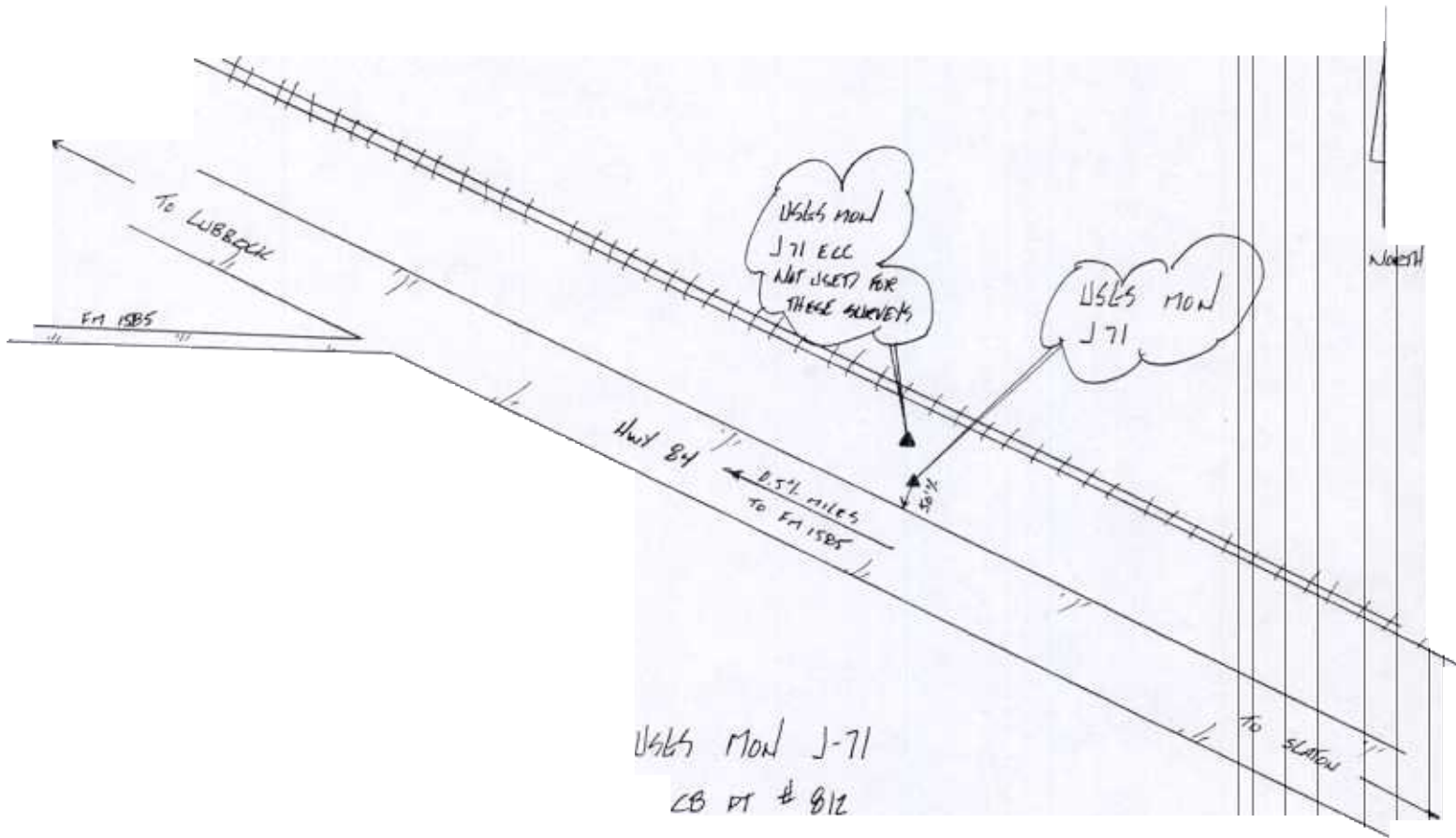
POINT DESCRIPTION

USGS J-71

**P
O
I
N
T

N
U
M
B
E
R**

**8
1
2**



**HORIZONTAL & VERTICAL CONTROL FOR
LUBBOCK, TEXAS
JANUARY, 2000**

HORIZONTAL DATUM NAD83 VERTICAL DATUM NAVD 88

PT NO	NORTHING	EASTING	ELEVATION	WGS84 LAT	WGS84 LONG	ELLIP HGHT
813	7275634.453	954032.820	3193.22	33°35'05.56251"N	101°49'54.13671"W	3106.068

HORIZONTAL DATUM NAD27 VERTICAL DATUM NGVD 29

PT NO	NORTHING	EASTING	ELEVATION	WGS84 LAT	WGS84 LONG	ELLIP HGHT
813	725016.465	681302.245	3191.964	33°35'05.56253"N	101°49'54.13674"W	3106.083

POINT DESCRIPTION

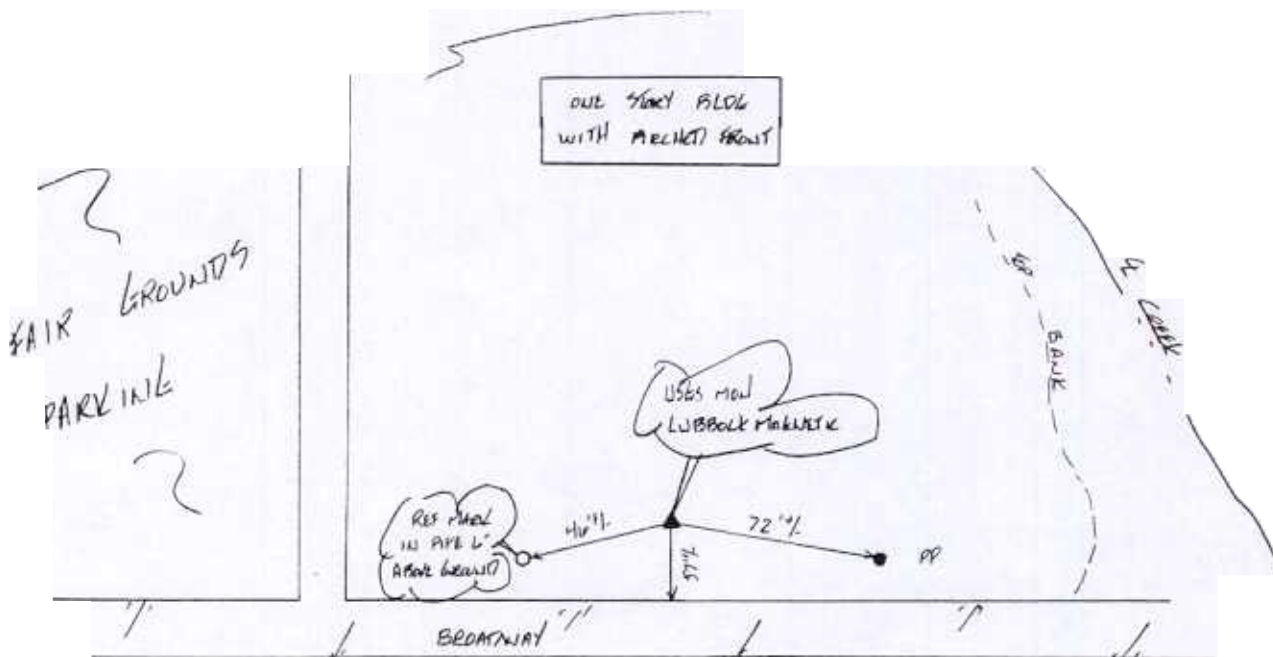
USGS LUB. MAG.

**P
O
I
N
T**

**N
U
M
B
E
R**

**8
1
3**

F A R G R O U N D S



1964 MON LUBBOCK MAGNETIC
CB PT # 813

**HORIZONTAL & VERTICAL CONTROL FOR
LUBBOCK, TEXAS
JANUARY, 2000**

HORIZONTAL DATUM NAD83 VERTICAL DATUM NAVD 88

PT NO	NORTHING	EASTING	ELEVATION	WGS84 LAT	WGS84 LONG	ELLIP HGHT
814	7236716.612	932086.175	3247.20	33°28'33.74915"N	101°53'58.55368"W	3161.126

HORIZONTAL DATUM NAD27 VERTICAL DATUM NGVD 29

PT NO	NORTHING	EASTING	ELEVATION	WGS84 LAT	WGS84 LONG	ELLIP HGHT
814	686310.086	658985.795	3246.000	33°28'33.74906"N	101°53'58.55372"W	3161.119

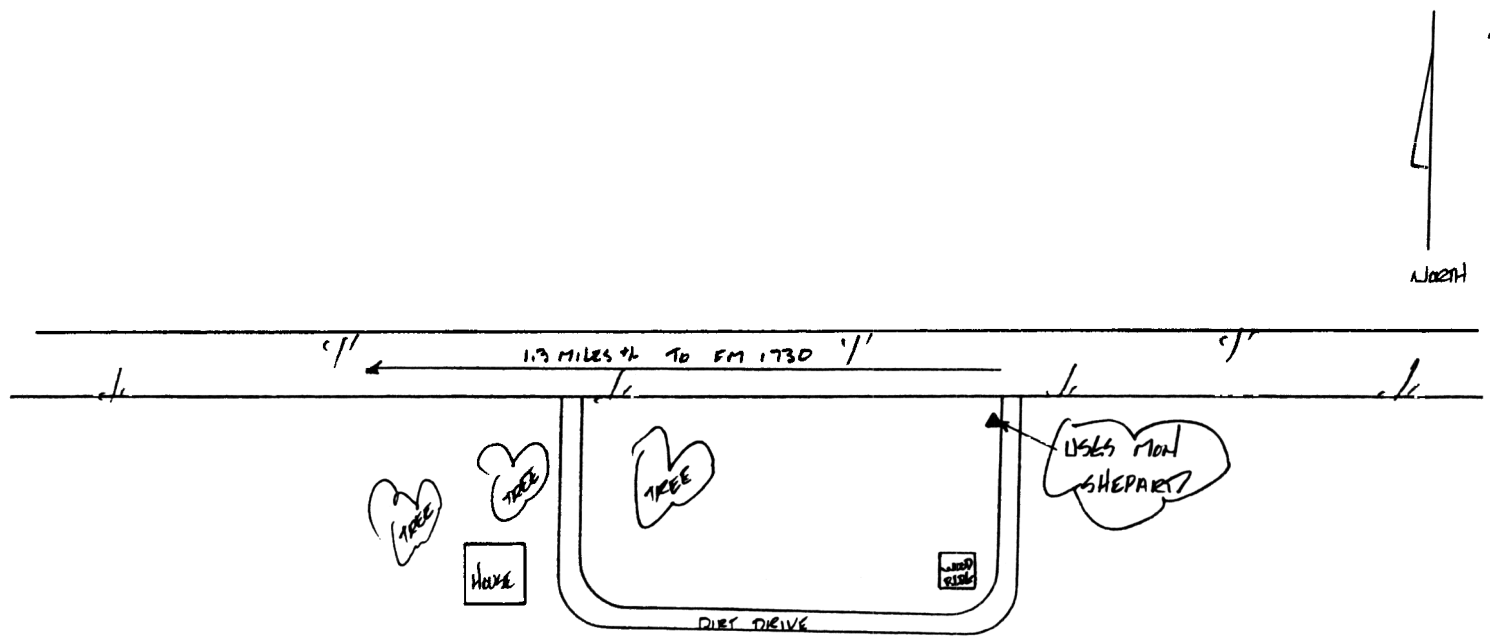
POINT DESCRIPTION

USGS SHEPARD

**P
O
I
N
T

N
U
M
B
E
R**

**8
1
4**



USGS MON. SHEPARD
CB PT → 814

HORIZONTAL & VERTICAL CONTROL FOR LUBBOCK, TEXAS JANUARY, 2000

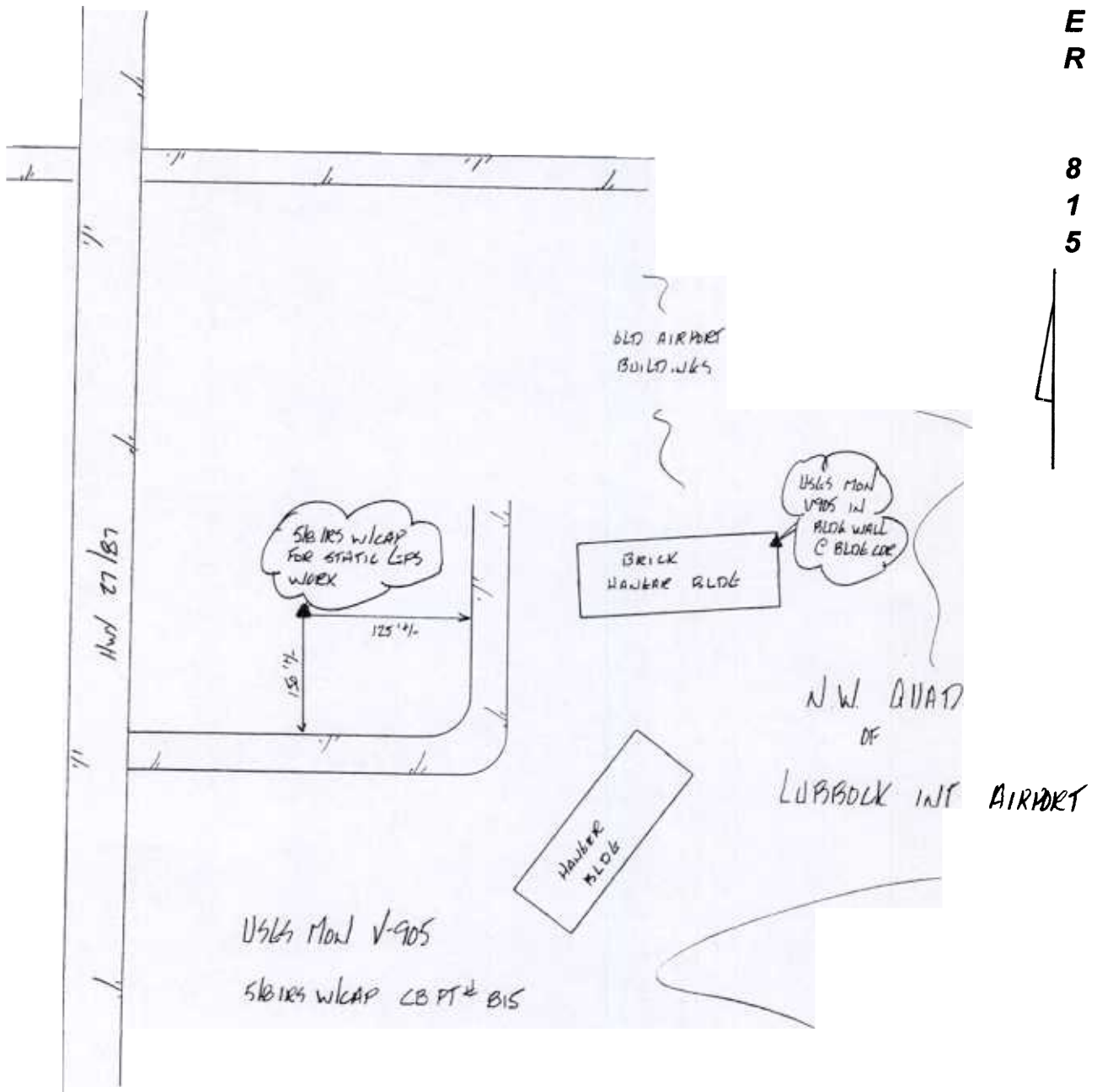
HORIZONTAL DATUM NAD83 VERTICAL DATUM NAVD 88

PT NO	NORTHING	EASTING	ELEVATION	WGS84 LAT	WGS84 LONG	ELLIP HGHT
815	7301425.814	953743.007	3238.08	33°39'20.51773"N	101°50'07.23766"W	3150.496

HORIZONTAL DATUM NAD27 VERTICAL DATUM NGVD 29

PT NO	NORTHING	EASTING	ELEVATION	WGS84 LAT	WGS84 LONG	ELLIP HGHT
815	750809.121	681258.357	3236.762	33°39'20.51780"N	101°50'07.23765"W	3150.495

POINT DESCRIPTION USGS V-905 IRS REF



**HORIZONTAL & VERTICAL CONTROL FOR
LUBBOCK, TEXAS
JANUARY, 2000**

HORIZONTAL DATUM NAD83 VERTICAL DATUM NAVD 88

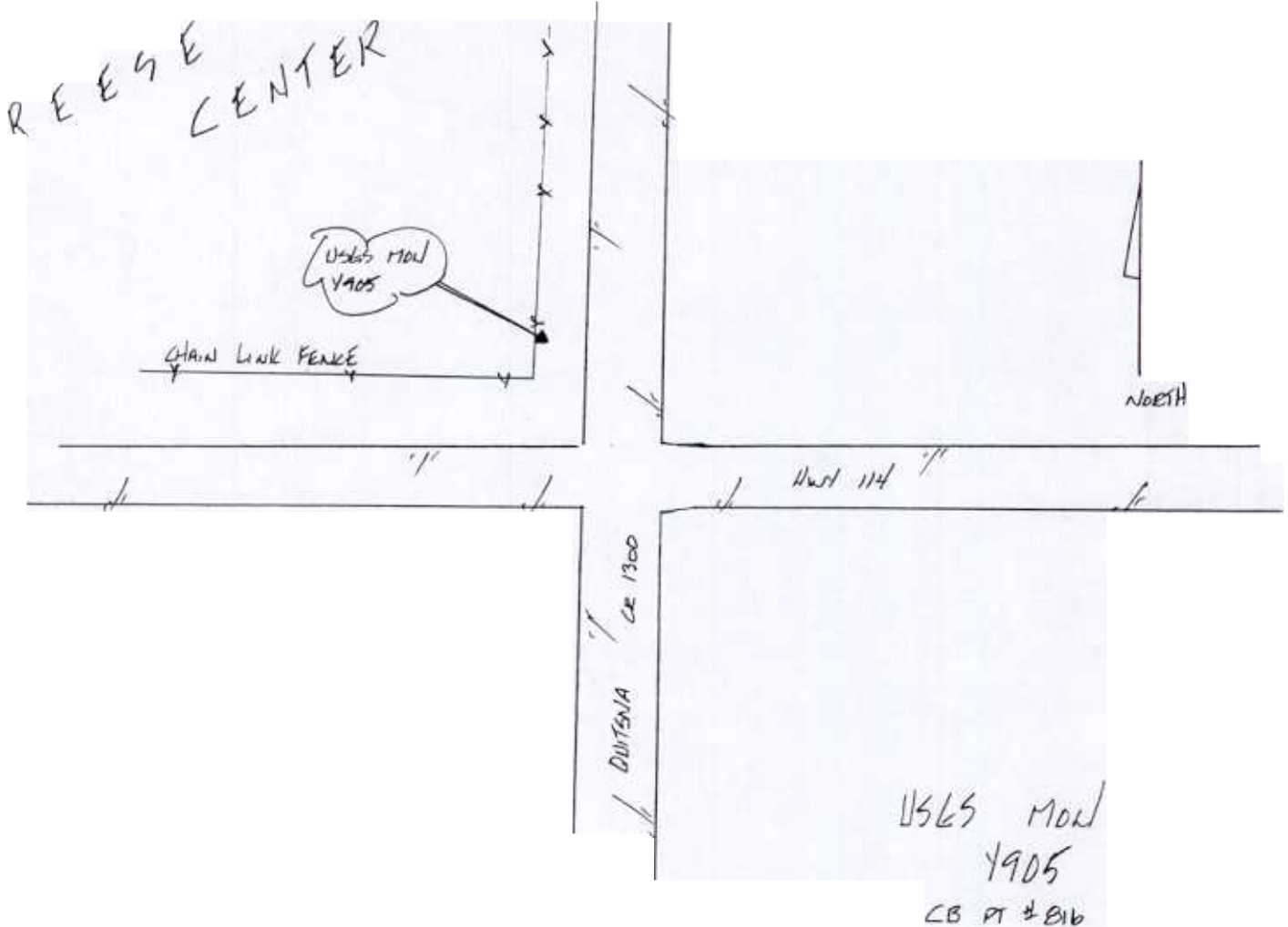
PT NO	NORTHING	EASTING	ELEVATION	WGS84 LAT	WGS84 LONG	ELLIP HGHT
816	7275074.290	894629.529	3316.96	33°34'40.84470"N	102°01'35.73758"W	3231.017

HORIZONTAL DATUM NAD27 VERTICAL DATUM NGVD 29

PT NO	NORTHING	EASTING	ELEVATION	WGS84 LAT	WGS84 LONG	ELLIP HGHT
816	725022.708	621897.015	3315.720	33°34'40.84471"N	102°01'35.73752"W	3231.032

POINT DESCRIPTION

USGS Y-905



P
O
I
N
T

N
U
M
B
E
R

8
1
6

HORIZONTAL & VERTICAL CONTROL FOR LUBBOCK, TEXAS JANUARY, 2000

HORIZONTAL DATUM NAD83 VERTICAL DATUM NAVD 88

PT NO	NORTHING	EASTING	ELEVATION	WGS84 LAT	WGS84 LONG	ELLIP HGHT
817	7293790.924	927637.310	3240.30	33°37'56.71730"N	101°55'12.98367"W	3153.316

HORIZONTAL DATUM NAD27 VERTICAL DATUM NGVD 29

PT NO	NORTHING	EASTING	ELEVATION	WGS84 LAT	WGS84 LONG	ELLIP HGHT
817	743423.564	655081.355	3238.690	33°37'56.71632"N	101°55'12.98642"W	3153.316

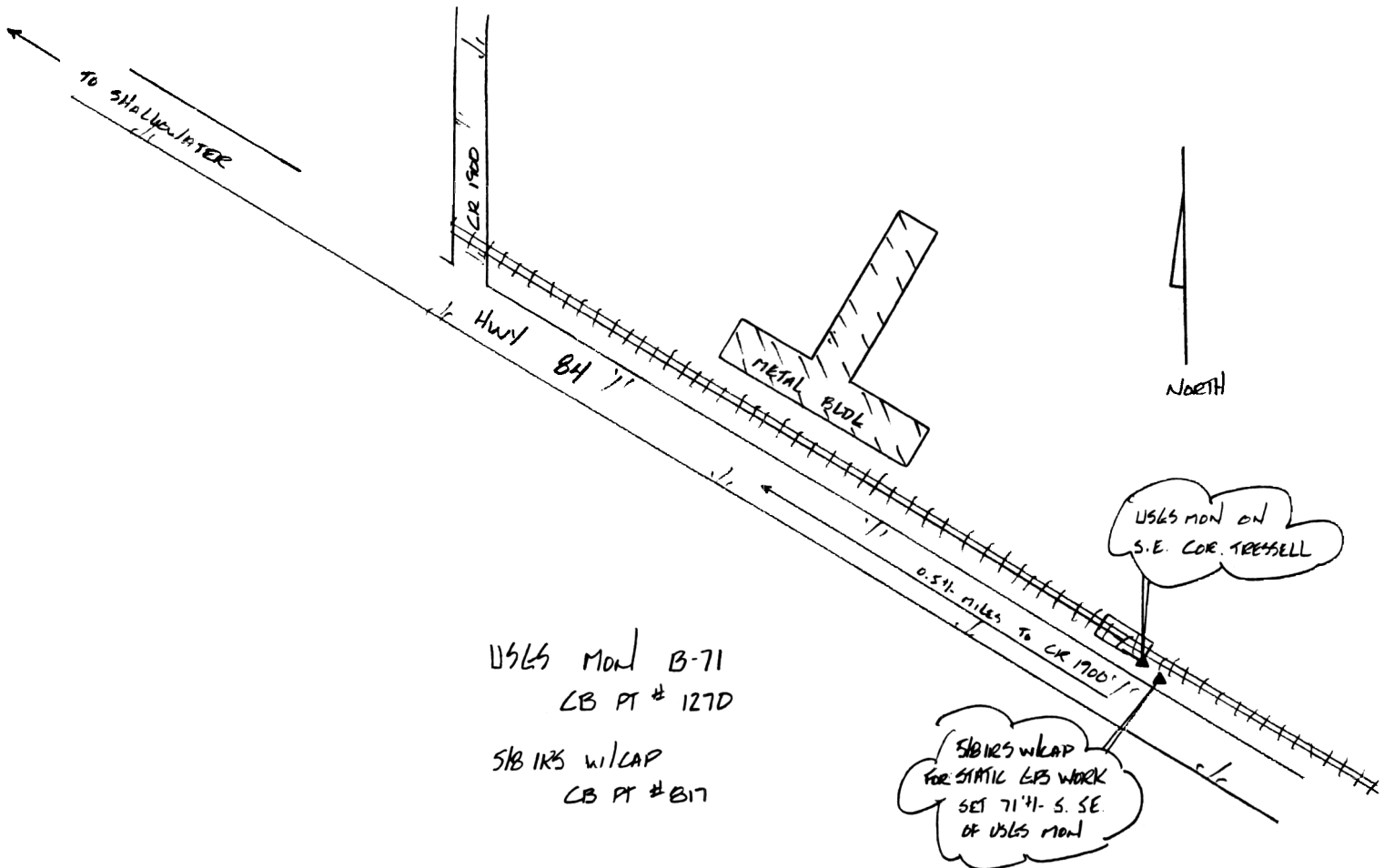
POINT DESCRIPTION

USGS B-71 IRS REF

**P
O
I
N
T**

**N
U
M
B
E
R**

**8
1
7**



HORIZONTAL & VERTICAL CONTROL FOR LUBBOCK, TEXAS JANUARY, 2000

HORIZONTAL DATUM NAD83 VERTICAL DATUM NAVD 88

PT NO	NORTHING	EASTING	ELEVATION	WGS84 LAT	WGS84 LONG	ELLIP HGHT
818	7282308.032	952326.481	3174.13	33°36'11.02114"N	101°50'16.80338"W	3086.897

HORIZONTAL DATUM NAD27 VERTICAL DATUM NGVD 29

PT NO	NORTHING	EASTING	ELEVATION	WGS84 LAT	WGS84 LONG	ELLIP HGHT
818	731705.930	679659.633	3172.841	33°36'11.02114"N	101°50'16.80340"W	3086.885

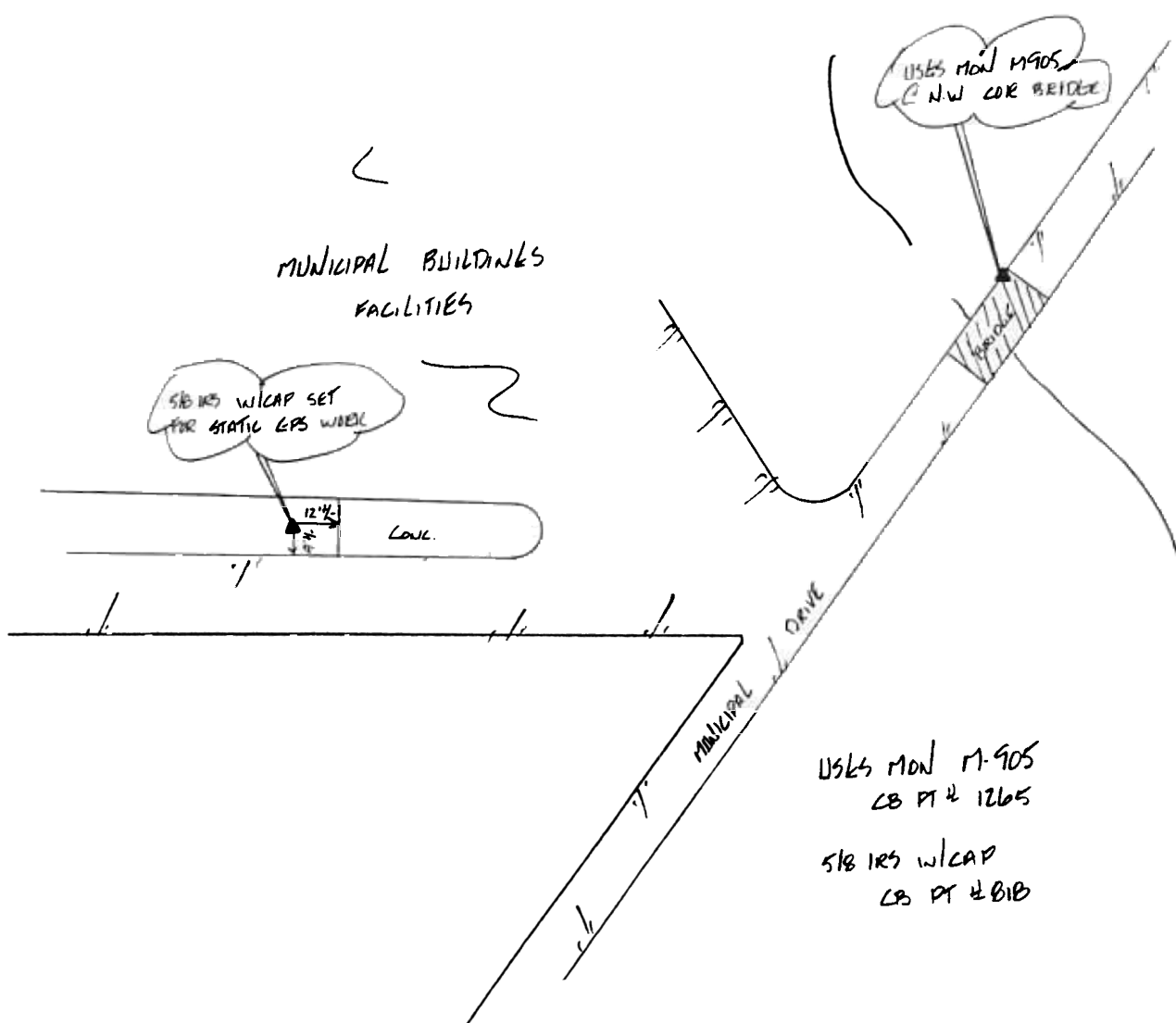
POINT DESCRIPTION USGS M-905 IRS REF

P
O
I
N
T

N
U
M
B
E
R

8
1
8

NORTH



**HORIZONTAL & VERTICAL CONTROL FOR
LUBBOCK, TEXAS
JANUARY, 2000**

HORIZONTAL DATUM NAD83 VERTICAL DATUM NAVD 88

PT NO	NORTHING	EASTING	ELEVATION	WGS84 LAT	WGS84 LONG	ELLIP HGHT
1186	7274063.039	941373.839	3214.81	33°34'46.02745"N	101°52'23.10770"W	3127.927

HORIZONTAL DATUM NAD27 VERTICAL DATUM NGVD 29

PT NO	NORTHING	EASTING	ELEVATION	WGS84 LAT	WGS84 LONG	ELLIP HGHT
1186	723565.835	668629.008	3213.548	33°34'46.02745"N	101°52'23.10770"W	3127.927

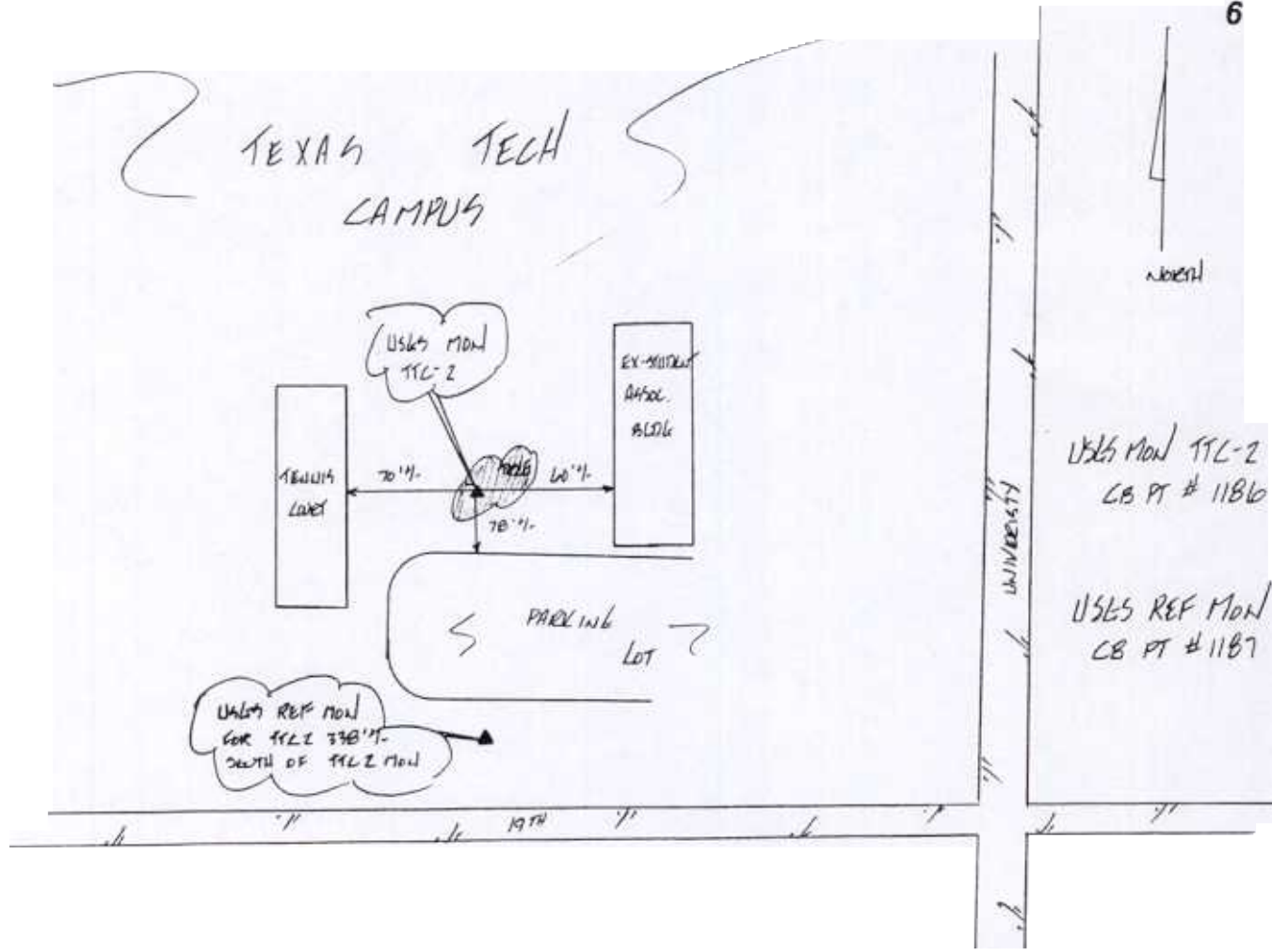
POINT DESCRIPTION

USGS TTC-2

**P
O
N
T

N
U
M
B
E
R**

**1
1
8
6**



HORIZONTAL & VERTICAL CONTROL FOR LUBBOCK, TEXAS JANUARY, 2000

HORIZONTAL DATUM NAD83 VERTICAL DATUM NAVD 88

PT NO	NORTHING	EASTING	ELEVATION	WGS84 LAT	WGS84 LONG	ELLIP HGHT
1187	7273729.232	941430.126	3213.93	33°34'42.74436"N	101°52'22.31606"W	3127.053

HORIZONTAL DATUM NAD27 VERTICAL DATUM NGVD 29

PT NO	NORTHING	EASTING	ELEVATION	WGS84 LAT	WGS84 LONG	ELLIP HGHT
1187	723231.511	668682.109	3212.670	33°34'42.74436"N	101°52'22.31606"W	3127.053

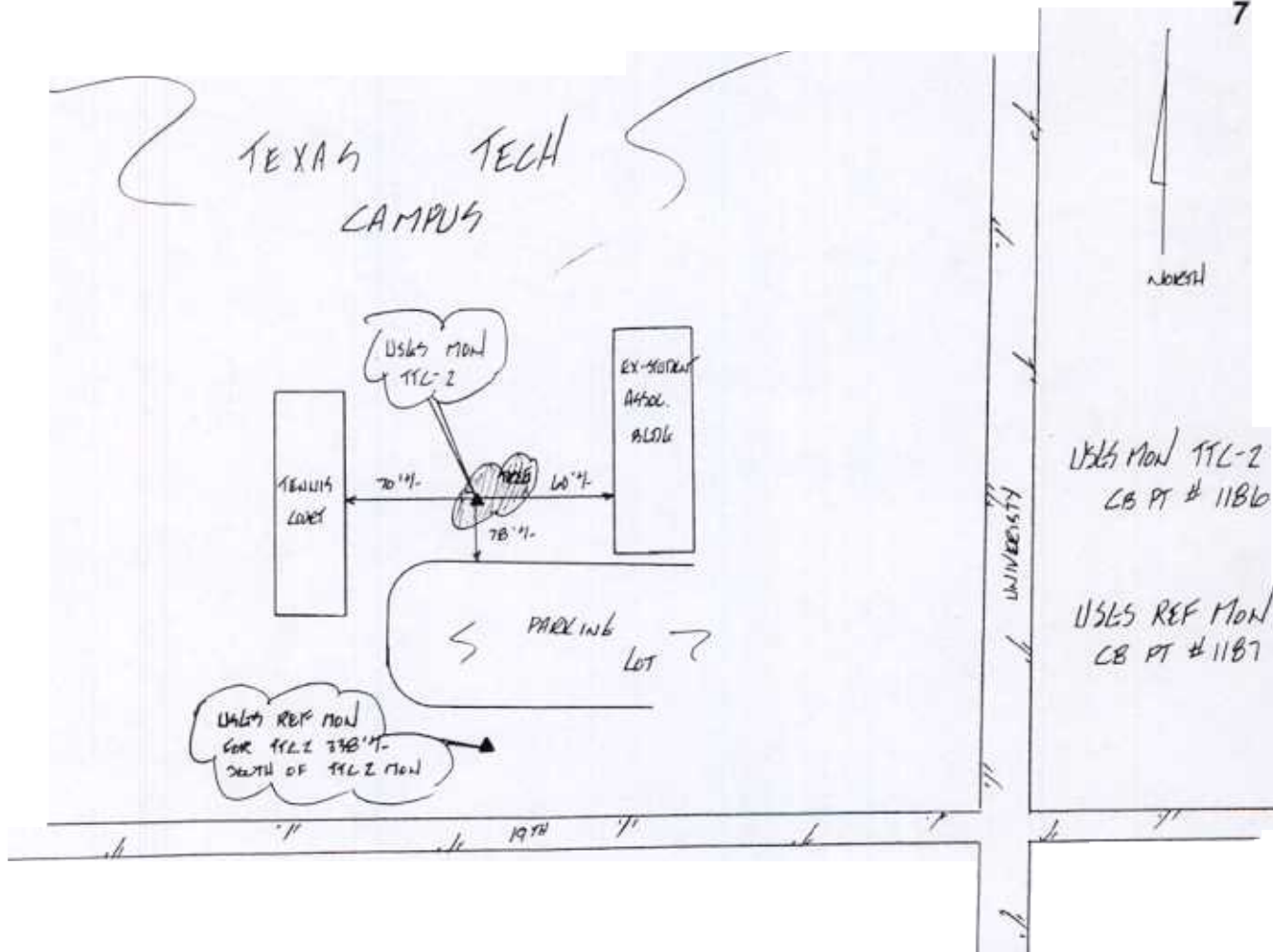
POINT DESCRIPTION

USGS TTC-2 REF

**P
O
I
N
T

N
U
M
B
E
R**

1
1
8
7



HORIZONTAL & VERTICAL CONTROL FOR LUBBOCK, TEXAS JANUARY, 2000

HORIZONTAL DATUM NAD83 VERTICAL DATUM NAVD 88

PT NO	NORTHING	EASTING	ELEVATION	WGS84 LAT	WGS84 LONG	ELLIP HGHT
1265	7282439.322	952716.800	3166.33	33°36'12.44210"N	101°50'12.24001"W	3079.078

HORIZONTAL DATUM NAD27 VERTICAL DATUM NGVD 29

PT NO	NORTHING	EASTING	ELEVATION	WGS84 LAT	WGS84 LONG	ELLIP HGHT
1265	731833.491	680051.183	3165.043	33°36'12.44210"N	101°50'12.24001"W	3079.078

POINT DESCRIPTION

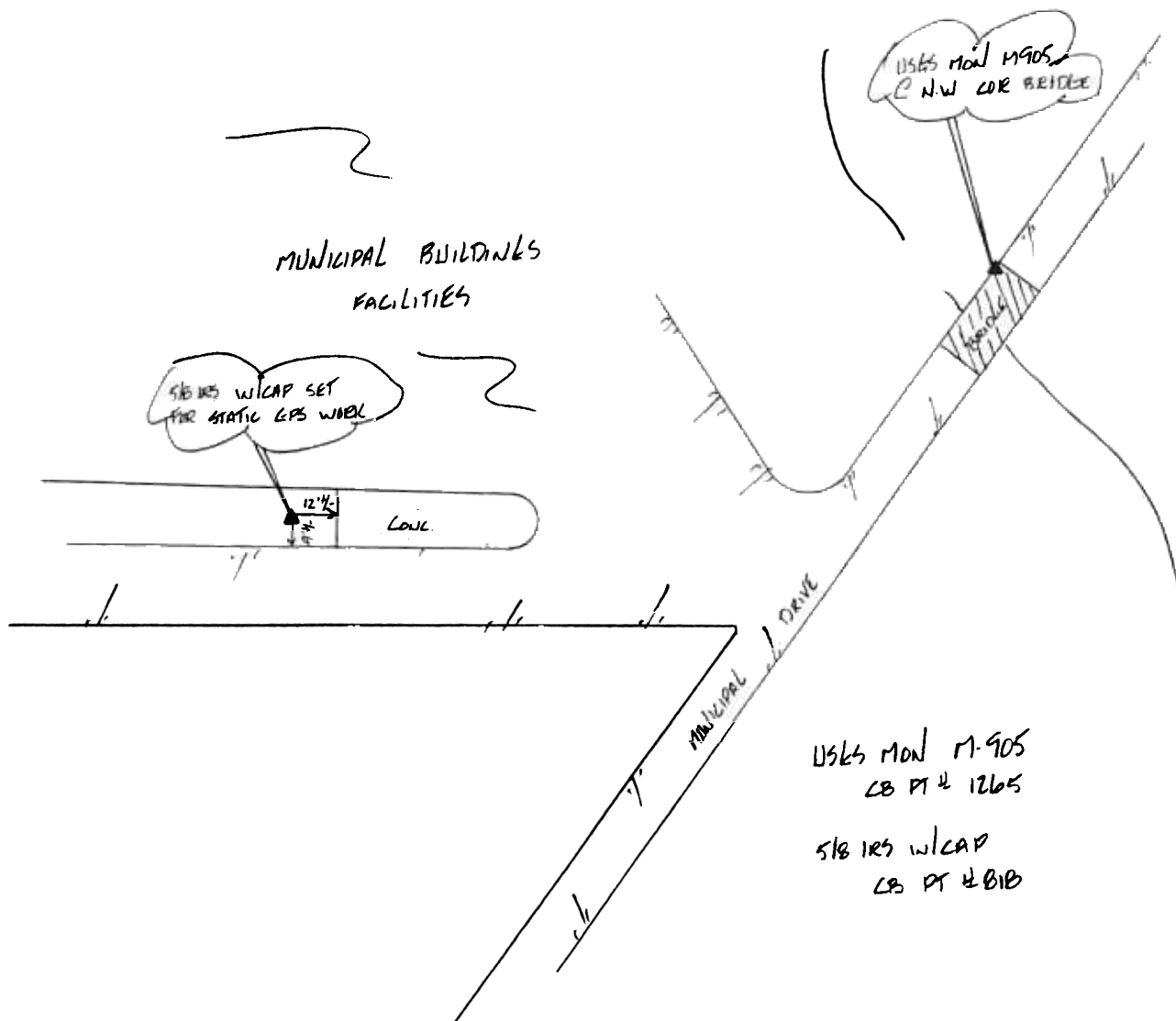
USGS M-905

**P
O
I
N
T**

**N
U
M
B
E
R**

1
2
6
5

JAN 11



**HORIZONTAL & VERTICAL CONTROL FOR
LUBBOCK, TEXAS
JANUARY, 2000**

HORIZONTAL DATUM NAD83 VERTICAL DATUM NAVD 88

PT NO	NORTHING	EASTING	ELEVATION	WGS84 LAT	WGS84 LONG	ELLIP HGHT
1268	7275609.502	953994.358	3195.13	33°35'05.30371"N	101°49'54.58179"W	3107.981

HORIZONTAL DATUM NAD27 VERTICAL DATUM NGVD 29

PT NO	NORTHING	EASTING	ELEVATION	WGS84 LAT	WGS84 LONG	ELLIP HGHT
1268	724991.880	681263.550	3193.861	33°35'05.30371"N	101°49'54.58179"W	3107.981

POINT DESCRIPTION

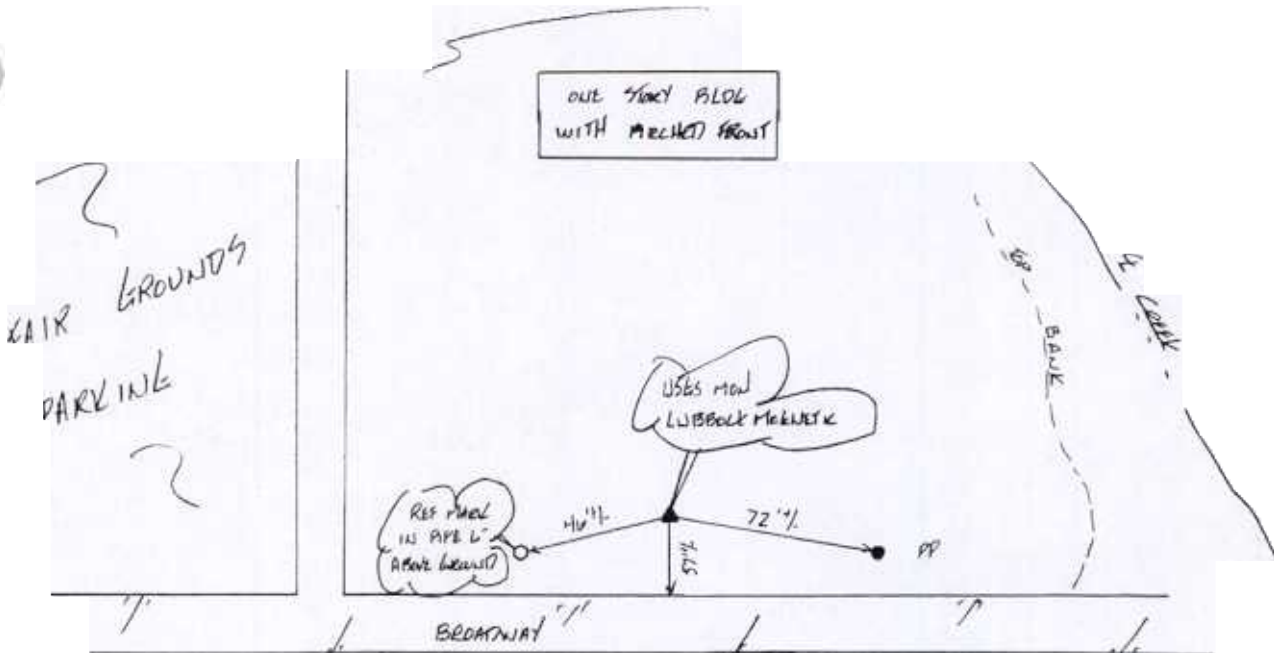
USGS LUB MAG REF

**P
O
I
N
T

N
U
M
B
E
R**

FAIR GROUNDS

**1
2
6
8**



USGS MON LUBBOCK MAGNETIC

CB PT # B13

USGS REF. MON

CB PT # 1268

HORIZONTAL & VERTICAL CONTROL FOR LUBBOCK, TEXAS JANUARY, 2000

HORIZONTAL DATUM NAD83 VERTICAL DATUM NAVD 88

PT NO	NORTHING	EASTING	ELEVATION	WGS84 LAT	WGS84 LONG	ELLIP HGHT
1270	7293862.112	927633.824	3243.16	33°37'57.42011"N	101°55'13.05229"W	3156.172

HORIZONTAL DATUM NAD27 VERTICAL DATUM NGVD 29

PT NO	NORTHING	EASTING	ELEVATION	WGS84 LAT	WGS84 LONG	ELLIP HGHT
1270	743494.779	655078.549	3241.861	33°37'57.42011"N	101°55'13.05229"W	3156.172

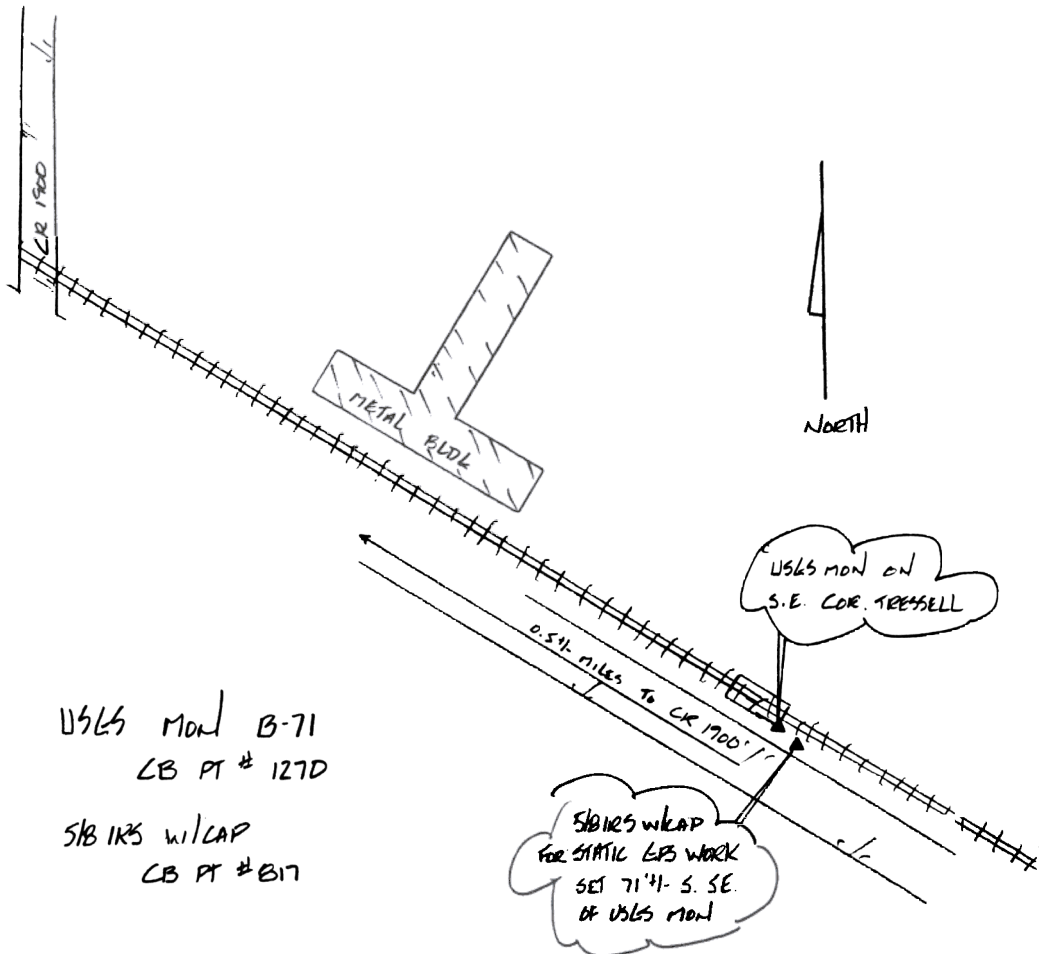
POINT DESCRIPTION

USGS B-71

**P
O
I
N
T

N
U
M
B
E
R**

**1
2
7
0**



USGS MON B-71
CB PT # 1270

SIBIR'S W/ CAP
CB PT # B17